

26 FF-226

REFERENCE PLAN OF AN EASEMENT
THROUGH LOTS 1 AND 2, PLAN PGP 41475,
DISTRICT LOT 1433, CARIBOO DISTRICT.
Pursuant to Section 99 of the Land Title Act.
B.C.G.S. 93G.097

PLAN NO. PGP 41476

Deposited in the Land Title Office at Prince
George this 28 day of July 1997

Scale: 1 : 750 (Distances are in metres)



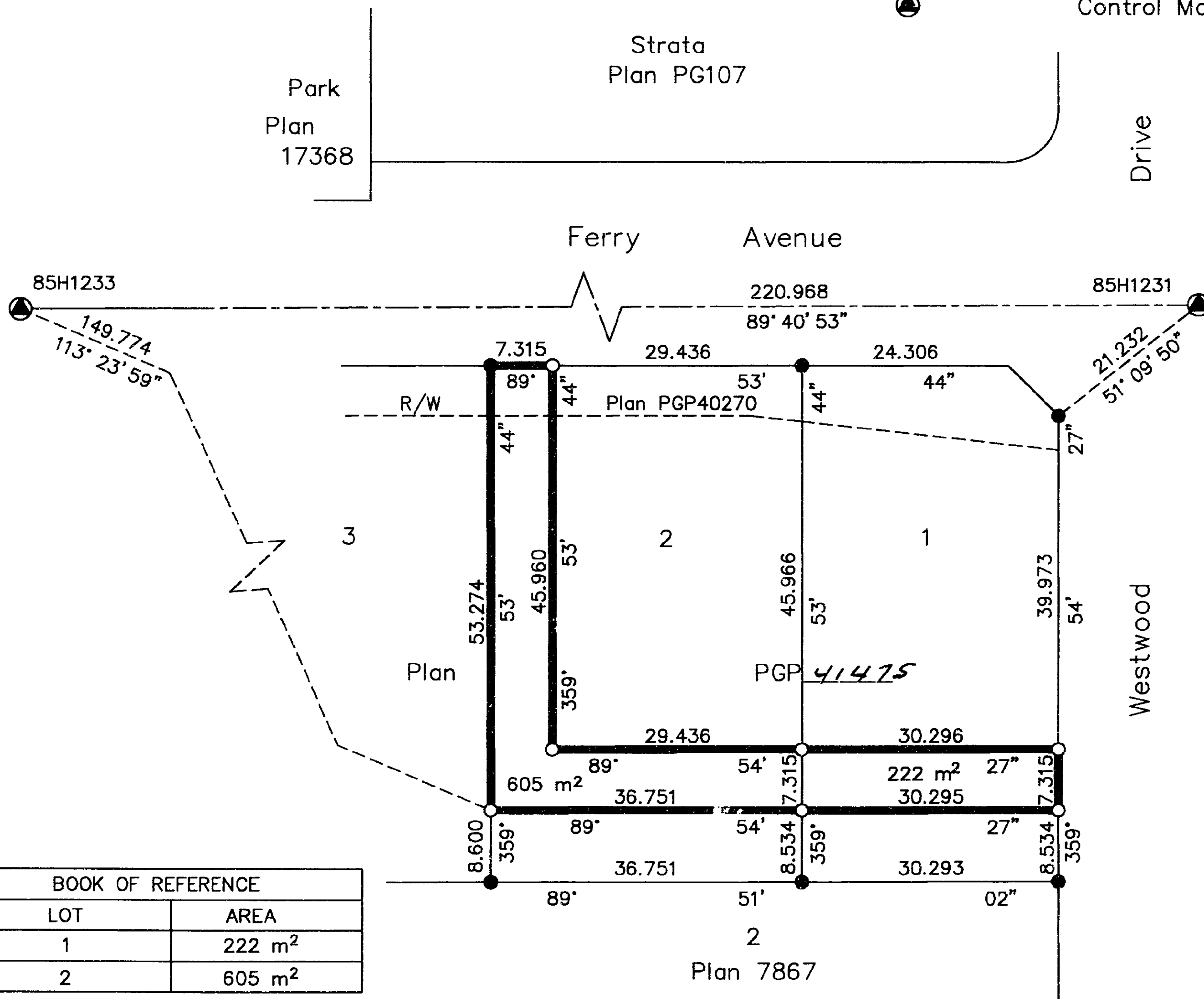
Grid bearings are derived from observations between
control monuments 85H1231 and 85H1233, integrated
survey area number 39, City of Prince George, B.C.

Note: This plan shows ground level measured
distances. Prior to computation of U.T.M.
co-ordinates multiply by the combined
factor 0.99951013

----- "B. Bigelow" MC
REGISTRAR PL42784

LEGEND

- Standard Iron Post Found
- Standard Iron Post Placed
- ⊙ Control Monument Found



I, Gordon Kilbride, a British Columbia Land Surveyor of
Prince George in British Columbia, certify that I was
present at and personally superintended the survey
represented by this plan and that the survey and plan
are correct. The survey was completed on the 14th day
of August, 1996.

Gordon Kilbride
Gordon Kilbride, B.C.L.S.
LTO Client No. 010909

This plan lies within the Fraser-Fort
George Regional District.

BOOK OF REFERENCE	
LOT	AREA
1	222 m ²
2	605 m ²

KILBRIDE LAND SURVEYING LTD.
British Columbia Land Surveyors
Prince George, B.C.
Ph: (604) 562-1196 Fax: 562-3656

F.B.- VL13	D.L.- 1433	File No. - 960325E
------------	------------	--------------------