

REFERENCE PLAN OF STATUTORY
RIGHT OF WAY ON PARCEL 1,
PLAN PGP40836, DISTRICT LOT 1592,
CARIBOO DISTRICT.

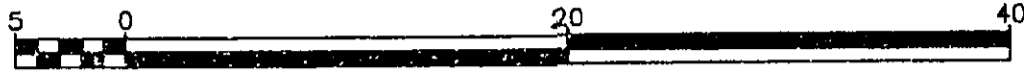
Pursuant to Section 99 of the Land Title Act.
B.C.G.S. 93G.086

PLAN NO. PGP 41255

Deposited in the Land Title Office at Prince
George this 18 day of June 1997

REGISTRAR "B. Bequin" MK

Scale: 1 : 500 (Distances are in metres)

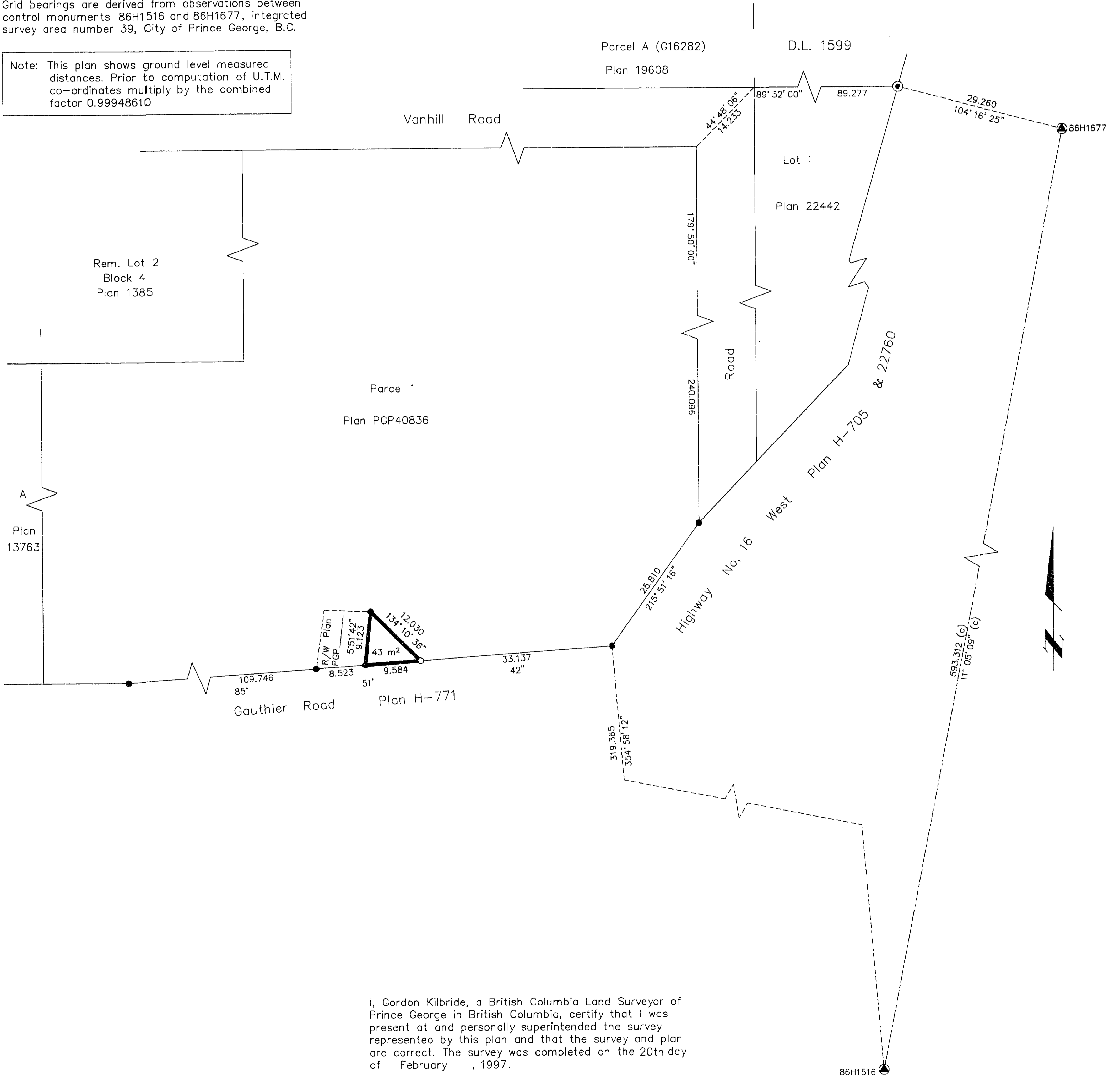


LEGEND

- Standard Concrete Post Found
- Standard Iron Post Found
- Standard Iron Post Placed
- ⊙ Control Monument Found

Grid bearings are derived from observations between
control monuments 86H1516 and 86H1677, integrated
survey area number 39, City of Prince George, B.C.

Note: This plan shows ground level measured
distances. Prior to computation of U.T.M.
co-ordinates multiply by the combined
factor 0.99948610



I, Gordon Kilbride, a British Columbia Land Surveyor of
Prince George in British Columbia, certify that I was
present at and personally superintended the survey
represented by this plan and that the survey and plan
are correct. The survey was completed on the 20th day
of February, 1997.

Gordon Kilbride
Gordon Kilbride, B.C.L.S.
LTO Client No. 010909

This plan lies within the Fraser-Fort
George Regional District.

KILBRIDE LAND SURVEYING LTD.
British Columbia Land Surveyors
Prince George, B.C.
Ph: (250) 562-1196 Fax: 562-3656

F.B.- RA D.L.- 1592 File No. - 960688R2

26 FF-226