

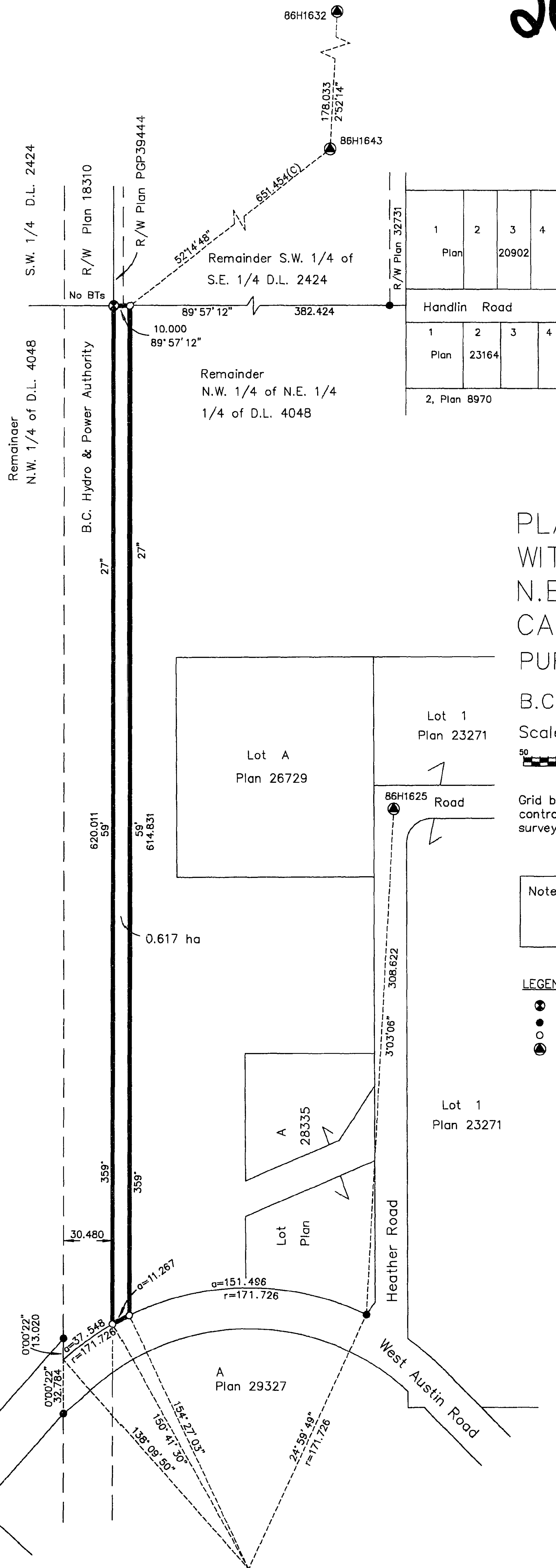
26-226

PLAN NO. PGP41072

Deposited in the Land Title Office at Prince George this 23 day of April, 1997.

*B. Bigras*  
REGISTRAR

PL 24130 017-491-193



PLAN OF STATUTORY RIGHT OF WAY  
 WITHIN REMAINDER OF  
 N.E. 1/4 OF DISTRICT LOT 4048,  
 CARIBOO DISTRICT.  
 PURSUANT TO SECTION 113 OF THE LAND TITLE ACT.

B.C.G.S. 93G.096

Scale: 1 : 2000 (Distances are in metres)



Grid bearings are derived from observations between control monuments 86H1643 and 86H1632, integrated survey area number 39, City of Prince George, B.C.

Note: This plan shows ground level measured distances. Prior to computation of U.T.M. co-ordinates multiply by the combined factor 0.99948100.

LEGEND

- Standard Capped Post Found
- Standard Iron Post Found
- Standard Iron Post Placed
- Control Monument Found

I, Gordon Kilbride, a British Columbia Land Surveyor of Prince George in British Columbia, certify that I was present at and personally supervised the survey represented by this plan and that the survey and plan are correct. The survey was completed on the 20th day of November, 1995.

*Gordon Kilbride*  
 Gordon Kilbride, B.C.L.S.  
 LTO Client No. 010909

This plan lies within the Fraser-Fort George Regional District.

**KILBRIDE LAND SURVEYING LTD.**  
 British Columbia Land Surveyors  
 Prince George, B.C.  
 Ph: (604) 562-1196 Fax: 562-3656

F.B.- UL24    D.L.- 4048    REF. NO.- 900758-2

I hereby certify that this is an Official Plan of the right of way shown outlined hereon.

*[Signature]*  
 Surveyor General (ACTING)  
 Victoria, B.C., April 16, 1997.

30 T 1744