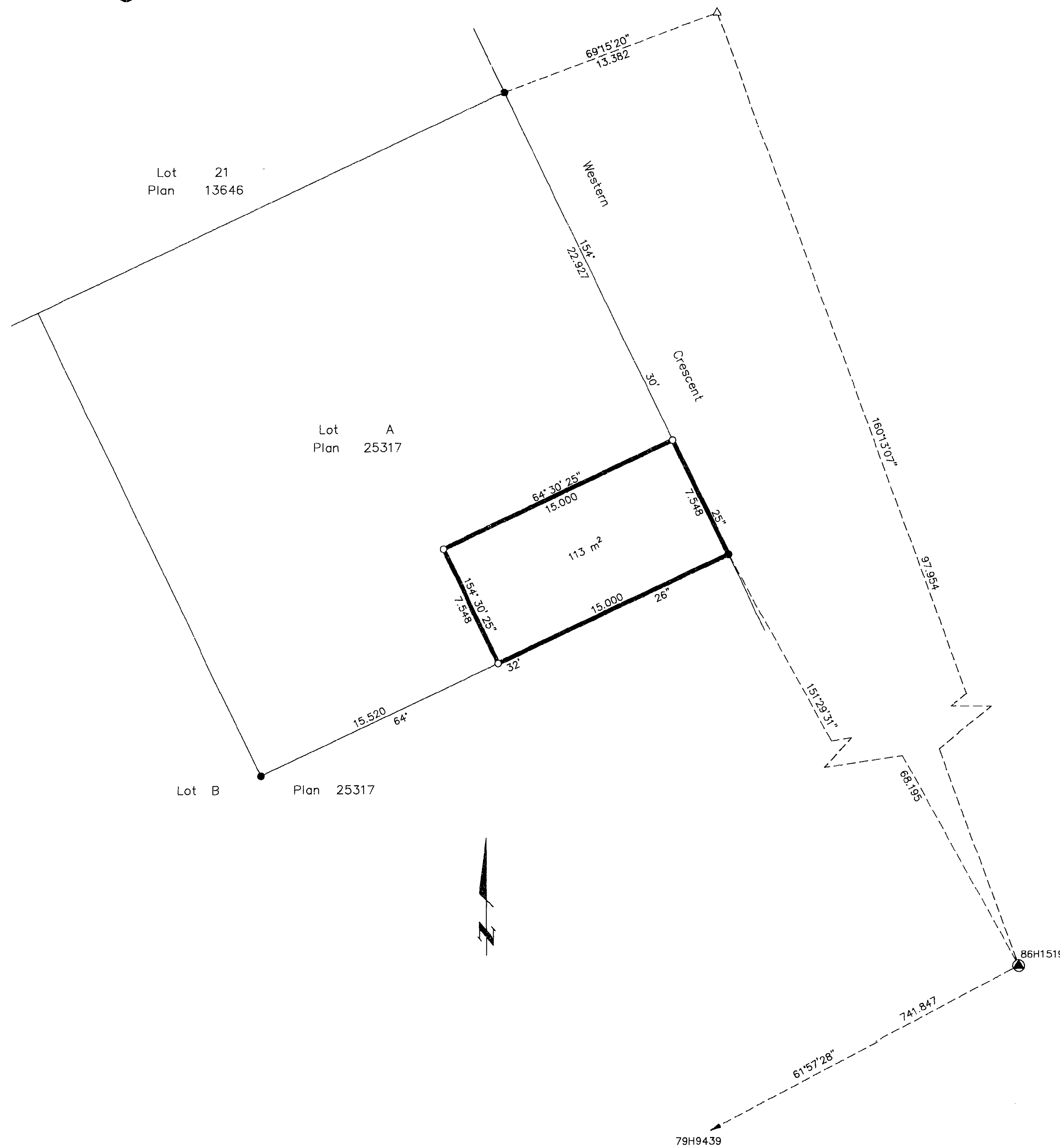


26-FF-226

PLAN NO. PGP 40967

Deposited in the Land Title Office at Prince George this 25 day of MARCH 1997

REGISTRAR *"B. Bejean" mk*
PL12454



BCTel

REFERENCE PLAN OF STATUTORY RIGHT OF WAY IN LOT A, PLAN 25317, DISTRICT LOT 625, CARIBOO DISTRICT.

Pursuant to Section 113 of the Land Title Act. B.C.G.S. 93G.086

Scale: 1 : 200 (Distances are in metres)



LEGEND

- Standard Iron Post Found
- Standard Iron Post Placed
- △ Traverse Hub Placed
- ⊙ Control Monument Found

Grid bearings are derived from observations between control monuments 86H1519 and 79H9439, integrated survey area number 39, City of Prince George, B.C.

Note: This plan shows ground level measured distances. Prior to computation of U.T.M. co-ordinates multiply by the combined factor 0.99948420

I, Dale L. Keown, a British Columbia Land Surveyor of Prince George in British Columbia, certify that I was present at and personally superintended the survey represented by this plan and that the survey and plan are correct. The survey was completed on the 17th day of June, 1996.

Dale Keown

Dale L. Keown, B.C.L.S.
LTO Client No. 010908

This plan lies within the Fraser-Fort George Regional District.

KILBRIDE LAND SURVEYING LTD.
British Columbia Land Surveyors
Prince George, B.C.
Ph: (604) 562-1196 Fax: 562-3656

F.B.- RA D.L.- 625 REF. NO.- 960361