

26-FF-226

PLAN OF RIGHT OF WAY THROUGH REMAINDER OF LOT 1, PLAN 8693, DISTRICT LOT 2607, CARIBOO DISTRICT.

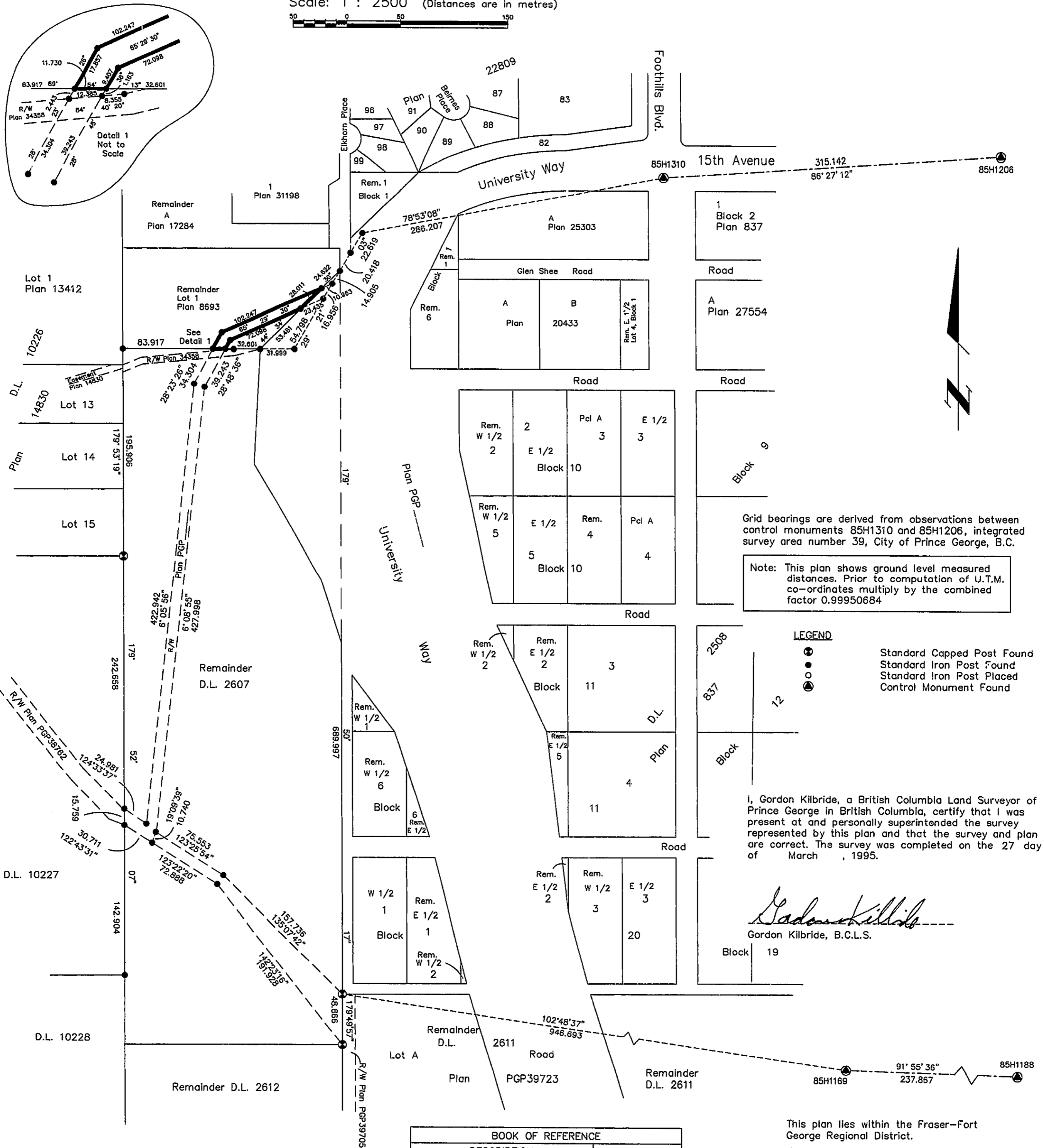
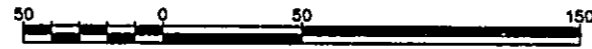
Pursuant to Section 113 of the Land Title Act.
B.C.G.S. 93G.096

PLAN NO. PGP 40824

Deposited in the Land Title Office at Prince
George this 17 day of Jan 1997

Brian Bigras/dg
REGISTRAR
Ph 2024

Scale: 1 : 2500 (Distances are in metres)



Grid bearings are derived from observations between control monuments 85H1310 and 85H1206, integrated survey area number 39, City of Prince George, B.C.

Note: This plan shows ground level measured distances. Prior to computation of U.T.M. co-ordinates multiply by the combined factor 0.99950684

LEGEND

- Standard Capped Post Found
- Standard Iron Post Found
- Standard Iron Post Placed
- Control Monument Found

I, Gordon Kilbride, a British Columbia Land Surveyor of Prince George in British Columbia, certify that I was present at and personally superintended the survey represented by this plan and that the survey and plan are correct. The survey was completed on the 27 day of March, 1995.

Gordon Kilbride
Gordon Kilbride, B.C.L.S.

BOOK OF REFERENCE	
DESCRIPTION	AREA
Lot 1, Plan 8693	0.101 ha

This plan lies within the Fraser-Fort George Regional District.

KILBRIDE LAND SURVEYING LTD.
British Columbia Land Surveyors
Prince George, B.C.
Ph: (604) 562-1196 Fax: 562-3656

F.B.- VC 35 | D.L.- 2607 | FILE No. 940946C6