

26 FF-226

PLAN NO. PGP 40724

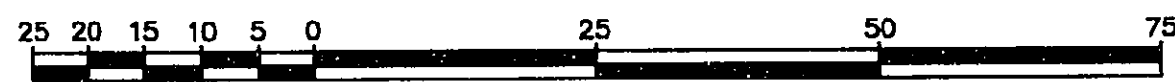
Deposited in the Land Title Office at Prince George this 26 day of Nov. 1996

Brian Bigras /dq
REGISTRAR

PLAN OF STATUTORY RIGHT OF WAY OF PART OF THE REMAINDER LOT A, PLAN PGP40558, DISTRICT LOT 2433, AND OF PART OF THE REMAINDER OF SOUTH WEST 1/4, DISTRICT LOT 4027, CARIBOO DISTRICT.

Pursuant to Section 113 of the Land Title Act. B.C.G.S. 93J.007

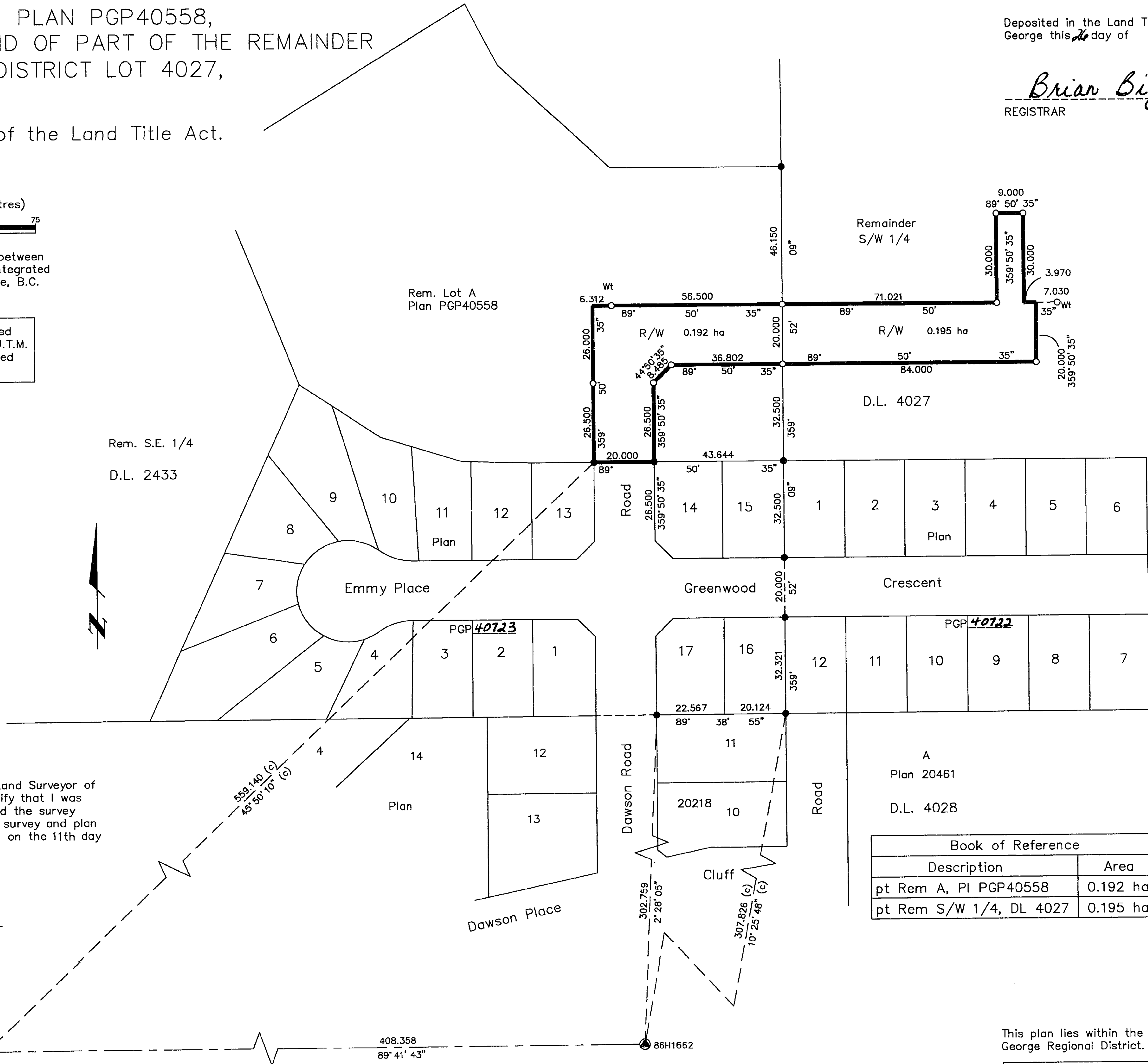
Scale: 1 : 1000 (Distances are in metres)



Grid bearings are derived from observations between control monuments 86H1621 and 86H1662, integrated survey area number 39, City of Prince George, B.C.

Note: This plan shows ground level measured distances. Prior to computation of U.T.M. co-ordinates multiply by the combined factor 0.99948779

- LEGEND**
- Standard Iron Post Found
 - Standard Iron Post Placed
 - ▲ Control Monument Found



I, Gordon Kilbride, a British Columbia Land Surveyor of Prince George in British Columbia, certify that I was present at and personally superintended the survey represented by this plan and that the survey and plan are correct. The survey was completed on the 11th day of October, 1996.

Gordon Kilbride

Gordon Kilbride, B.C.L.S.
LTO Client No. 010909

A
Plan 20461
D.L. 4028

Book of Reference	
Description	Area
pt Rem A, PI PGP40558	0.192 ha
pt Rem S/W 1/4, DL 4027	0.195 ha

This plan lies within the Fraser-Fort George Regional District.

KILBRIDE LAND SURVEYING LTD.
British Columbia Land Surveyors
Prince George, B.C.
Ph: (604) 562-1196 Fax: 562-3656

F.B.- RA	D.L.- 2433	FILE No. 960339RW
----------	------------	-------------------