

26 FF-226

PLAN OF STATUTORY RIGHT OF WAY THROUGH LOT A, PLAN PGP 40644 DISTRICT LOT 936 CARIBOO DISTRICT

B.C.G.S. 93G.097

PURSUANT TO SECTION 214 OF
THE LAND TITLE ACT.



SCALE = 1 : 500

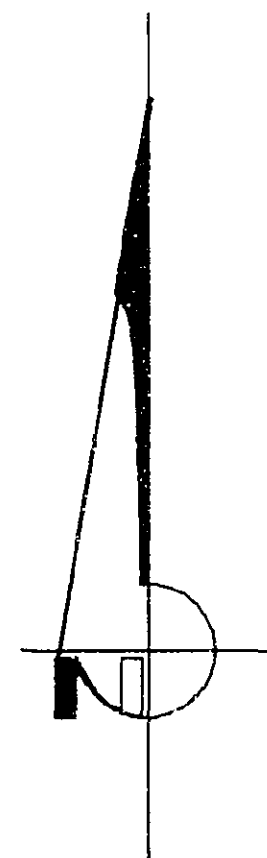
ALL DISTANCES ARE SHOWN IN METRES.

THIS PLAN SHOWS GROUND-LEVEL MEASURED DISTANCES.
PRIOR TO COMPUTATION OF U.T.M. COORDINATES, MULTIPLY
BY COMBINED FACTOR 0.99950855.

GRID BEARINGS ARE DERIVED FROM OBSERVATIONS
BETWEEN CONTROL MONUMENTS 79H8449, AND 85H1096,
INTEGRATED SURVEY AREA NUMBER 39, PRINCE GEORGE.

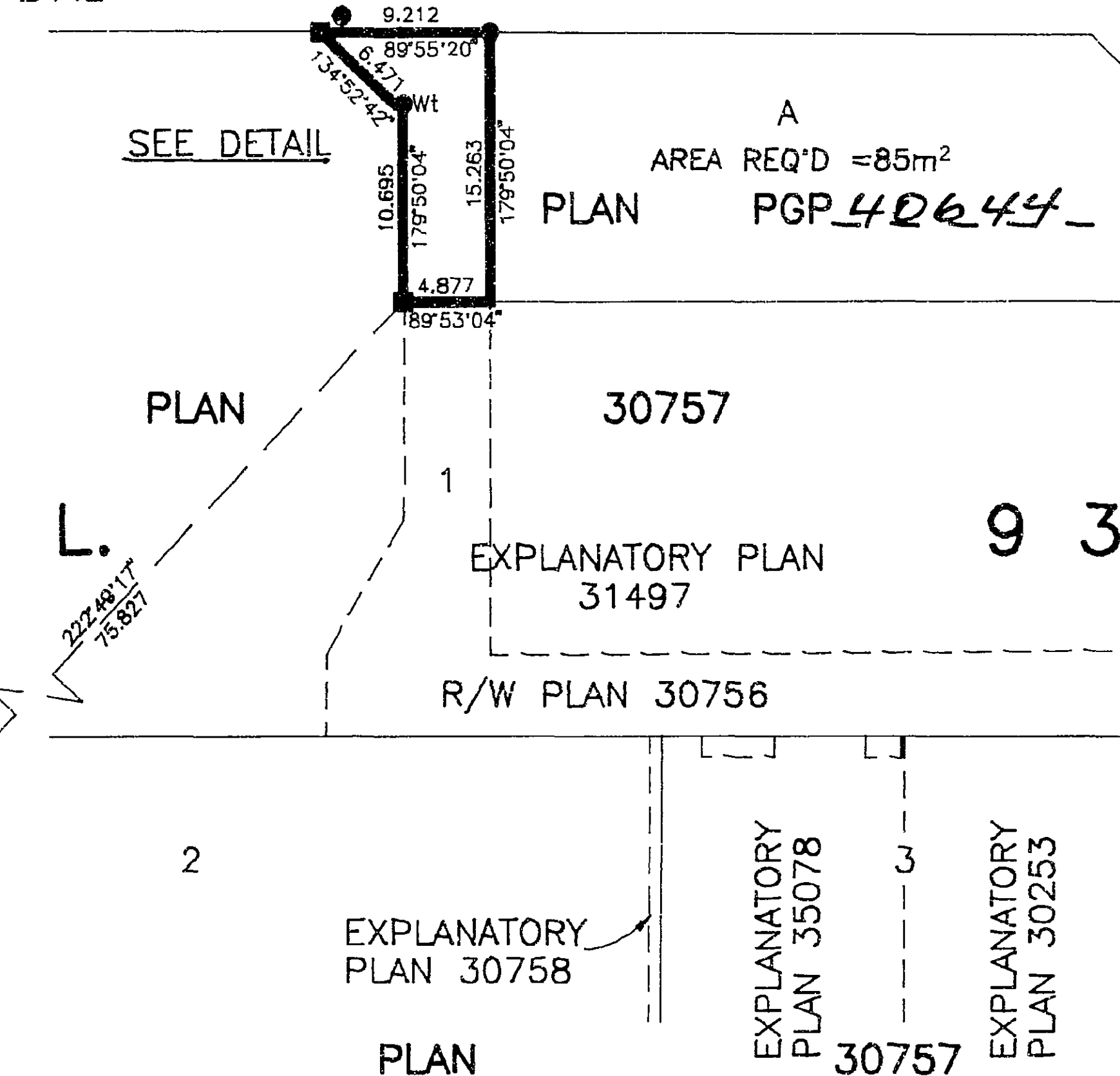
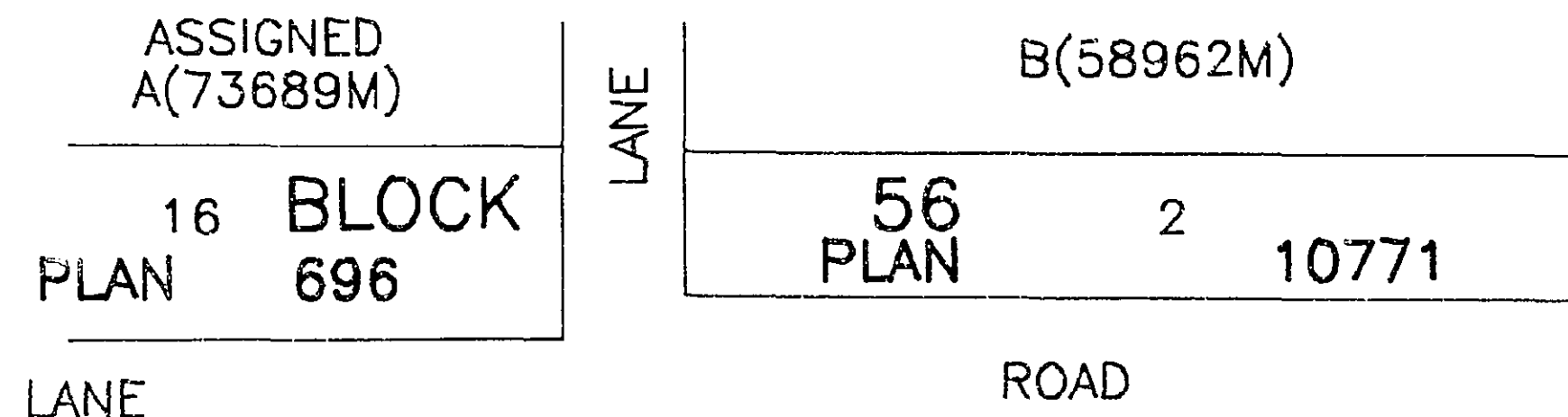
LEGEND

- STANDARD IRON POST FOUND
- STANDARD LEAD PLUG FOUND
- ▲ CONTROL MONUMENT



I, RONALD L. JOHNS, A BRITISH COLUMBIA LAND SURVEYOR, OF PRINCE GEORGE, IN BRITISH COLUMBIA, CERTIFY THAT I WAS PRESENT AT AND PERSONALLY SUPERINTENDED THE SURVEY REPRESENTED BY THIS PLAN AND THAT THE SURVEY AND PLAN ARE CORRECT. THE SURVEY WAS COMPLETED ON THE 25TH DAY OF JUNE, 1996.

R.L. JOHNS, B.C.L.S., C.L.S.



STREET

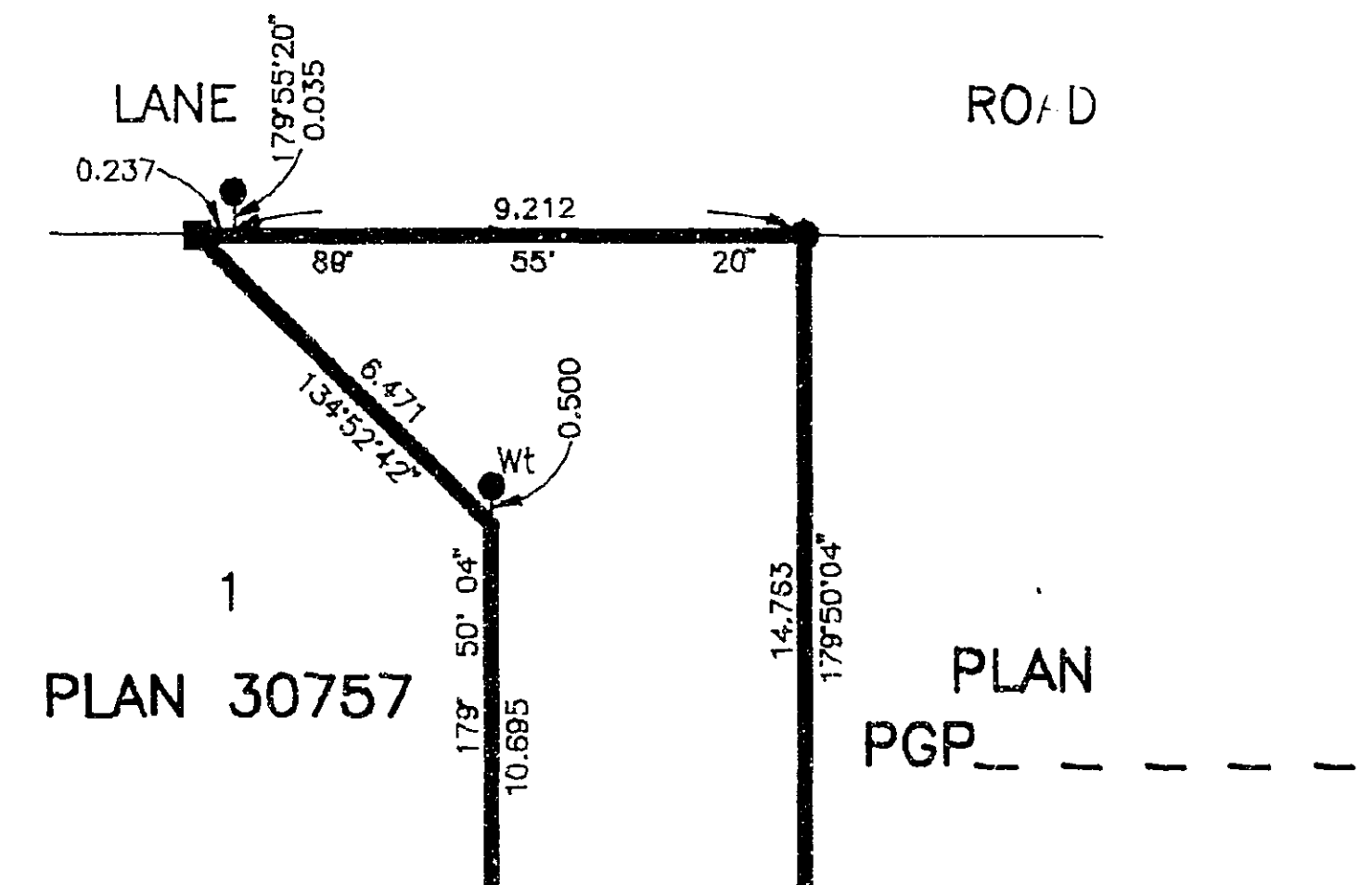
JOHNSON

PLAN No. PGP 40645

DEPOSITED IN THE LAND TITLE OFFICE
AT PRINCE GEORGE, B.C., THIS 8
DAY OF Nov 1996

REGISTRAR *"R. Biggs" MC*
PK 46085

DETAIL NOT TO SCALE



THIS PLAN LIES WITHIN THE FRASER-FORT GEORGE REGIONAL DISTRICT.

R. L. JOHNS LAND SURVEYING LTD.
LEGAL AND ENGINEERING SURVEYS
240 VICTORIA STREET
PRINCE GEORGE, B. C. V2L 2J4
PHONE: (604)562-5759
FAX: (604)562-5703

96-11-R

T4 - 10-12