

26-FF-226

PLAN OF STATUTORY RIGHT OF WAY THROUGH
 LOT 1, PLAN PGP_40103 -
 DISTRICT LOT 1599
 CARIBOO DISTRICT
 PURSUANT TO SECTION 214 OF THE LAND TITLE ACT.
 B.C.G.S 93G.086

PLAN No. PGP 40422

DEPOSITED IN THE LAND TITLE OFFICE
 AT PRINCE GEORGE, B.C., THIS 3
 DAY OF October, 19 96

REGISTRAR
"B. Begias" MC
 PK40376

THIS PLAN SHOWS GROUND-LEVEL MEASURED DISTANCES.
 PRIOR TO COMPUTATION OF U.T.M. COORDINATES, MULTIPLY
 BY COMBINED FACTOR 0.99948454.

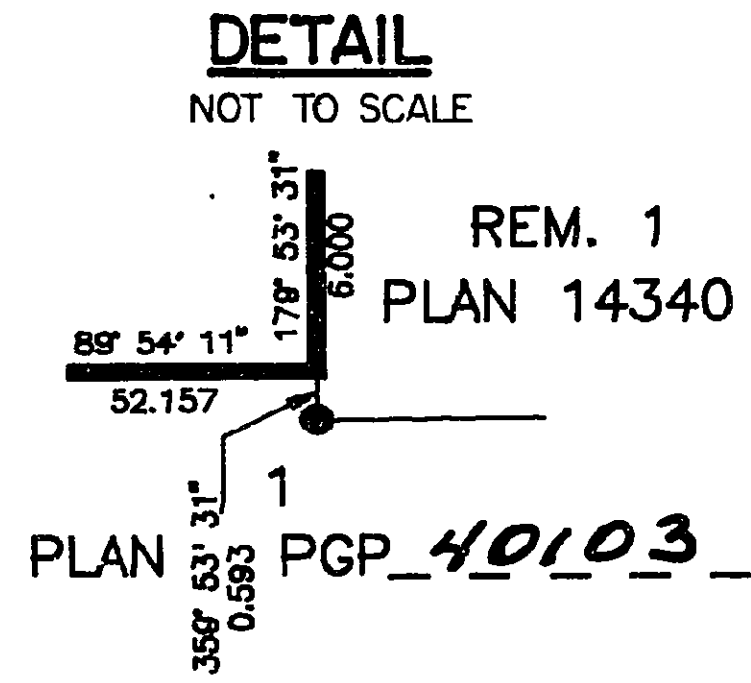
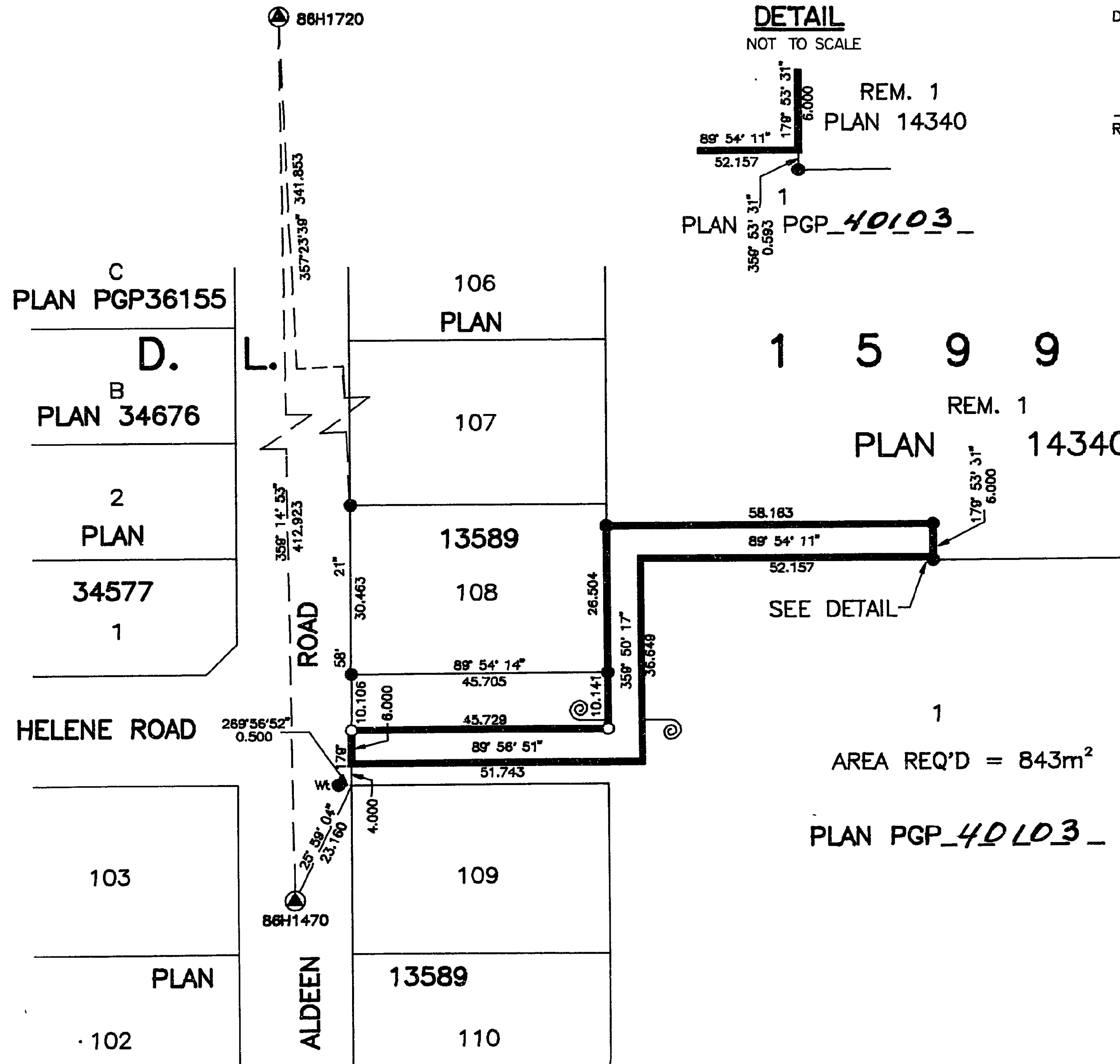
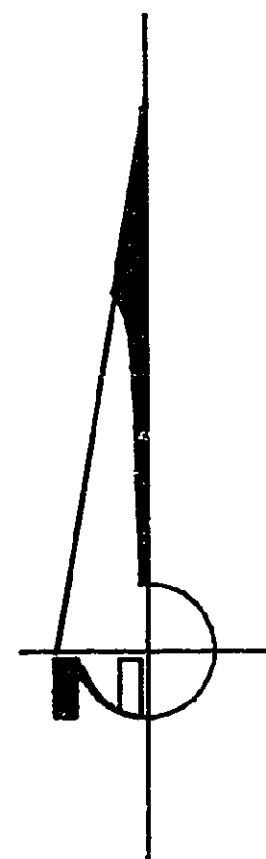
GRID BEARINGS ARE DERIVED FROM OBSERVATIONS
 BETWEEN CONTROL MONUMENTS 86H1720, AND 86H1470,
 INTEGRATED SURVEY AREA NUMBER 39, PRINCE GEORGE.



SCALE = 1 : 1000
 ALL DISTANCES ARE IN METRES

LEGEND

- STANDARD IRON POST FOUND
- STANDARD IRON POST PLACED
- ⊙ CONTROL MONUMENT



I, RONALD L. JOHNS, A BRITISH COLUMBIA LAND SURVEYOR, OF PRINCE GEORGE, IN BRITISH COLUMBIA, CERTIFY THAT I WAS PRESENT AT AND PERSONALLY SUPERINTENDED THE SURVEY REPRESENTED BY THIS PLAN AND THAT THE SURVEY AND PLAN ARE CORRECT. THE SURVEY WAS COMPLETED ON THE 14TH DAY OF MAY, 1996.

R.L. JOHNS, B.C.L.S., C.L.S.

THIS PLAN LIES WITHIN THE FRASER-FORT GEORGE REGIONAL DISTRICT.

R. L. JOHNS LAND SURVEYING LTD.
 LEGAL AND ENGINEERING SURVEYS
 240 VICTORIA STREET
 PRINCE GEORGE, B. C. V2L 2J4
 PHONE: (604)562-5759
 FAX: (604)562-5703