

26-FF-226

PLAN NO. PGP 40344

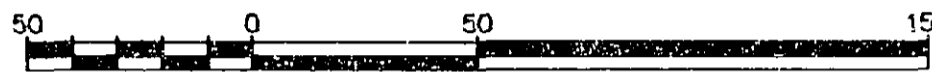
REFERENCE PLAN OF STATUTORY
RIGHT OF WAY THROUGH PART OF
THE REMAINDER OF LOT 138,
PLAN 21607, DISTRICT LOT 2611,
CARIBOO DISTRICT.

Pursuant to Section 113 of the Land Title Act.
B.C.G.S. 93G.086,087

Deposited in the Land Title Office at Prince
George this 15 day of Aug 1996

Brian Bigras/ag
REGISTRAR
PK 33270

Scale: 1 : 2500 (Distances are in metres)

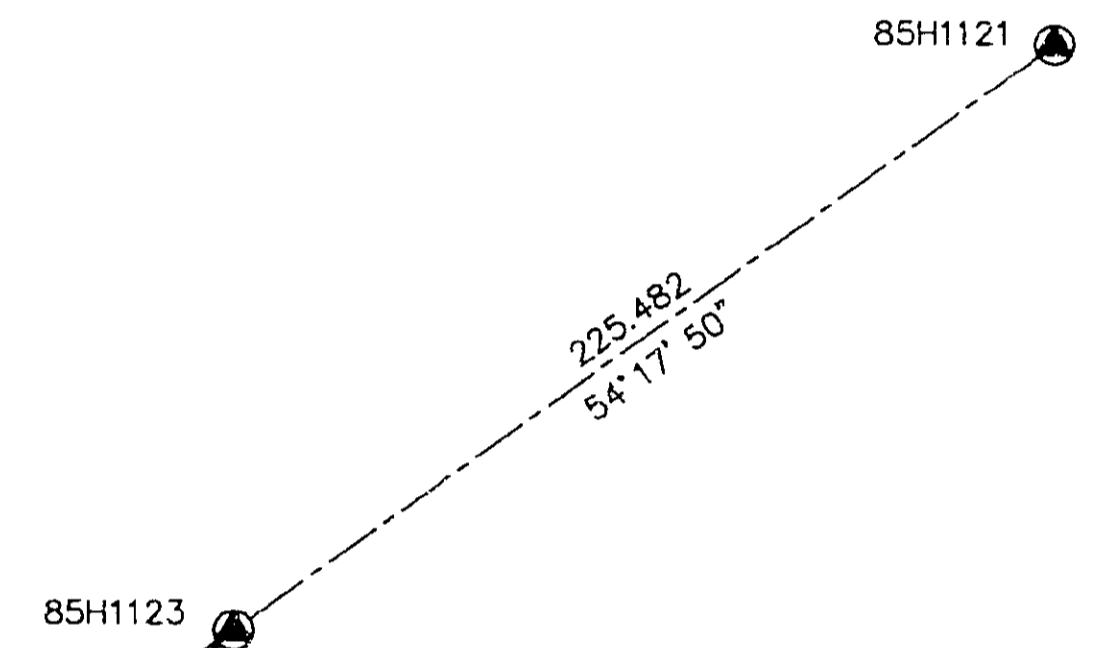
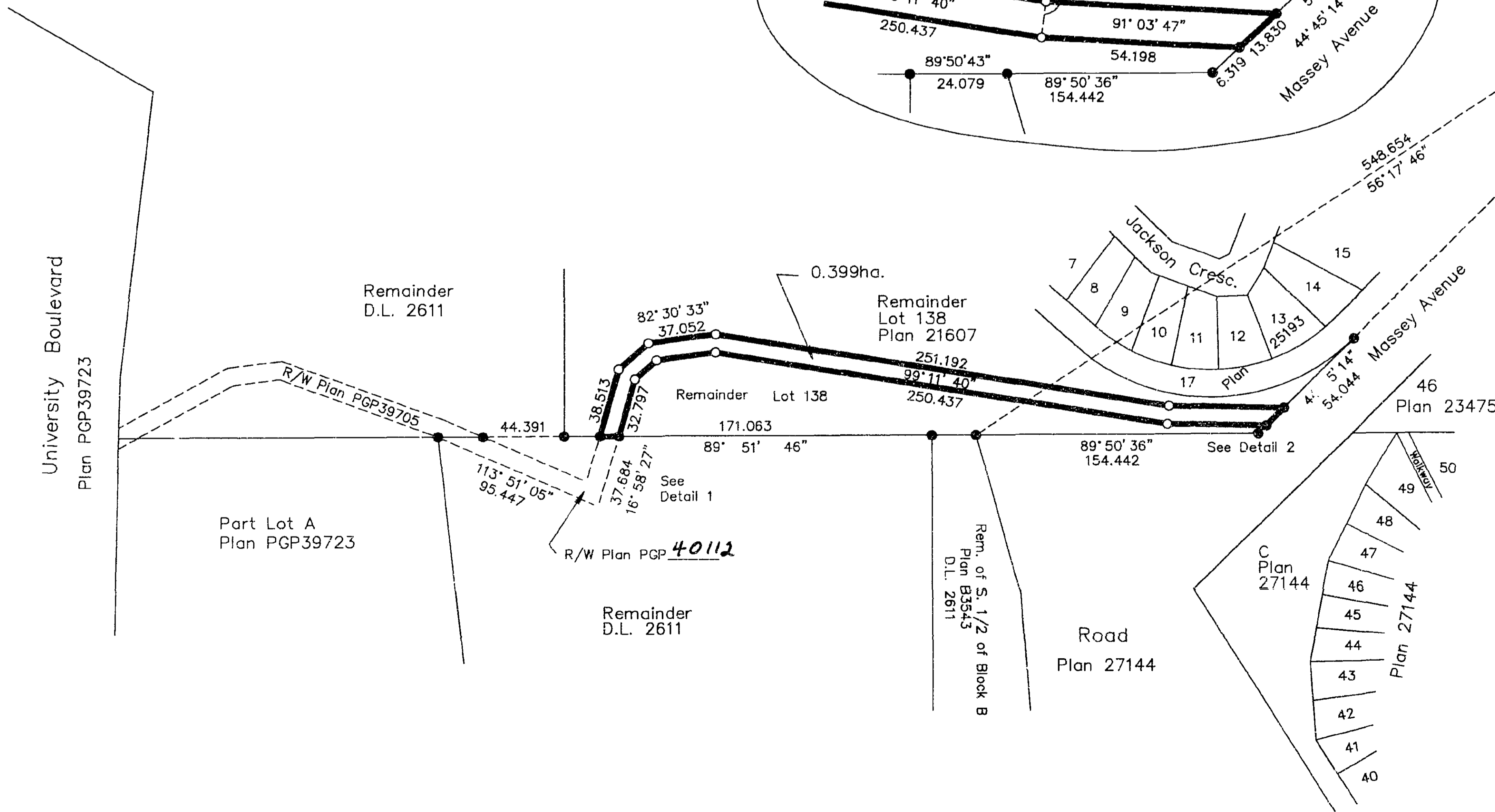
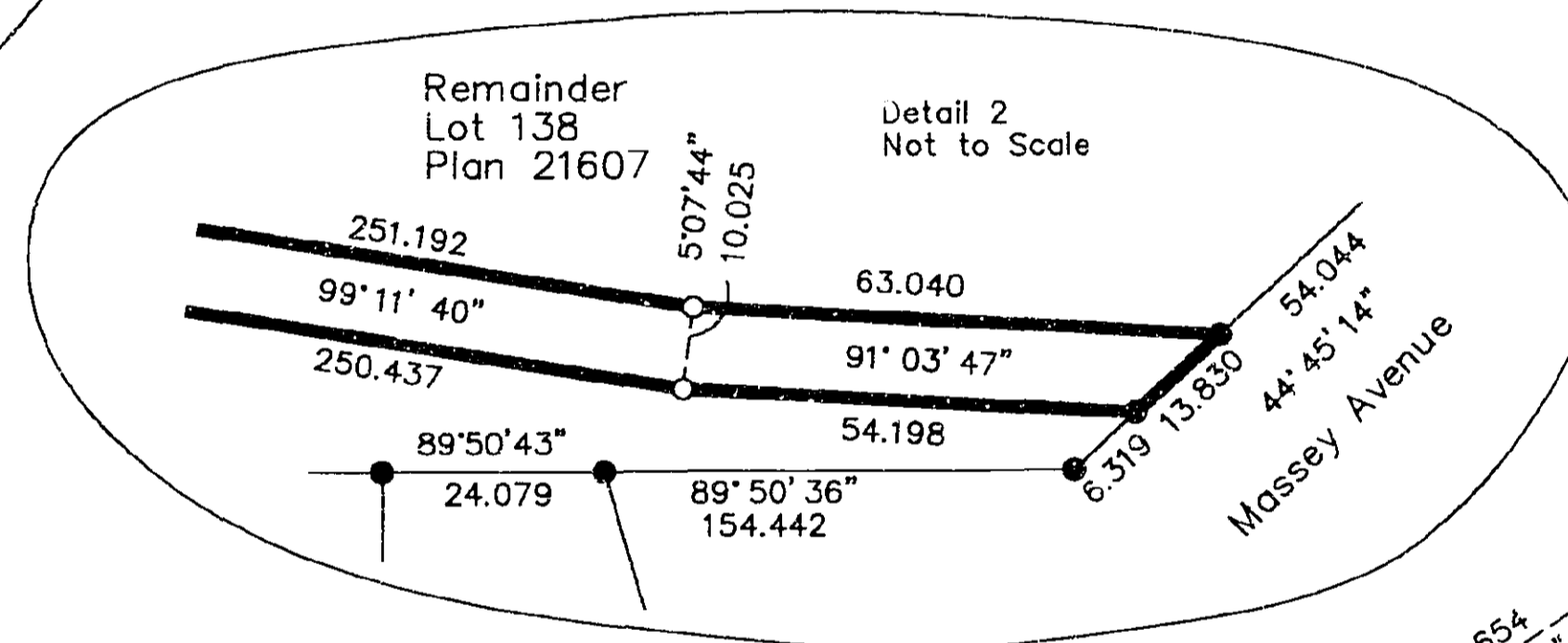
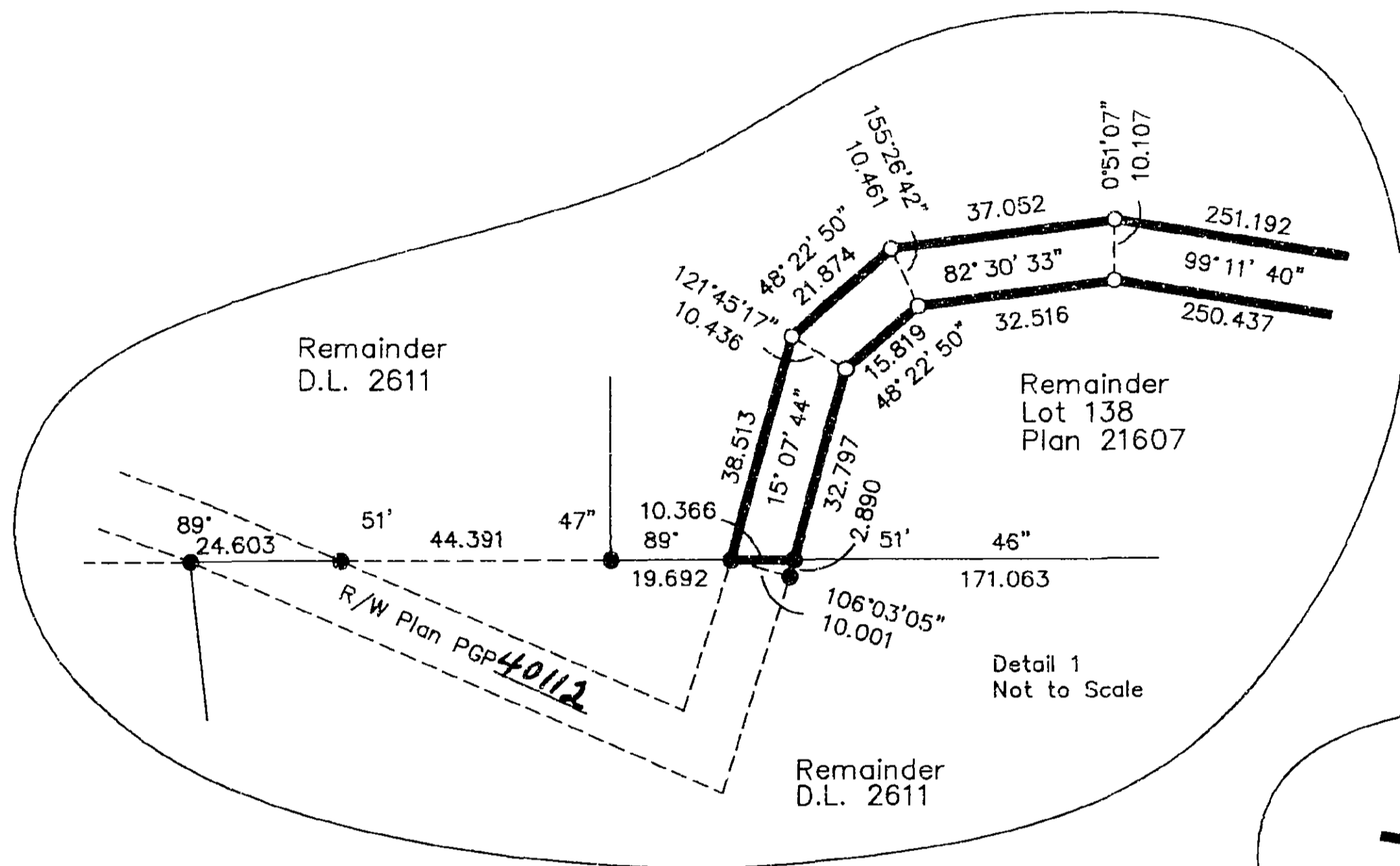


LEGEND

- Standard Iron Post Found
- Standard Iron Post Placed
- ⊙ Control Monument Found

Grid bearings are derived from observations between
control monuments 85H1121 and 85H1123, integrated
survey area number 39, City of Prince George, B.C.

Note: This plan shows ground level measured
distances. Prior to computation of U.T.M.
co-ordinates multiply by the combined
factor 0.99950792



BOOK OF REFERENCE	
DESCRIPTION	AREA
Rem. Lot 138, Plan 21607	0.399 ha

I, Gordon Kilbride, a British Columbia Land Surveyor of
Prince George in British Columbia, certify that I was
present at and personally superintended the survey
represented by this plan and that the survey and plan
are correct. The survey was completed on the 30th day
of August, 1994.

Gordon Kilbride
Gordon Kilbride, B.C.L.S.

This plan lies within the Fraser-Fort
George Regional District.

KILBRIDE LAND SURVEYING LTD. British Columbia Land Surveyors Prince George, B.C. Ph: (604) 562-1196 Fax: 562-3656		
F.B.- RA	D.L.- 2611	FILE No. - 940586A2