

26FF-226

PLAN OF STATUTORY RIGHT OF WAY THROUGH
REM. OF LOT A, PLAN 20590
DISTRICT LOT 632
CARIBOO DISTRICT

B.C.G.S. 93G.087



SCALE = 1 : 1000
DISTANCES ARE SHOWN IN METRES.

THIS PLAN SHOWS GROUND-LEVEL MEASURED DISTANCES.
PRIOR TO COMPUTATION OF U.T.M. COORDINATES, MULTIPLY
BY COMBINED FACTOR 0.99950018.

GRID BEARINGS ARE DERIVED FROM OBSERVATIONS
BETWEEN CONTROL MONUMENTS 85H1259 AND 85H1257.
INTEGRATED SURVEY AREA NUMBER 39.

LEGEND

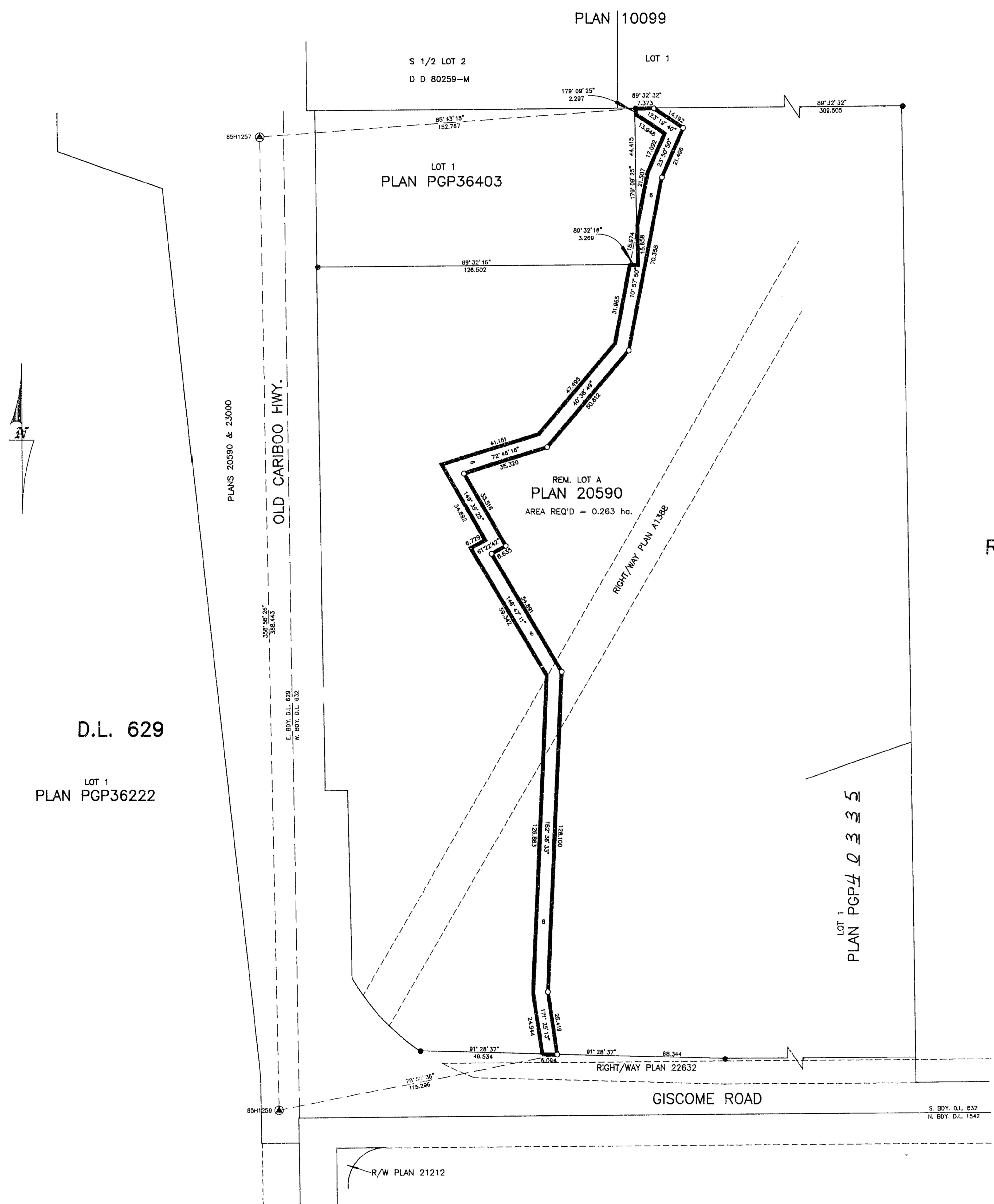
- STANDARD IRON POST FOUND
- STANDARD IRON POST PLACED
- ⊙ CONTROL MONUMENT

PLAN No. PGP 40336

DEPOSITED IN THE LAND TITLE OFFICE
AT PRINCE GEORGE, B.C., THIS 14
DAY OF Aug. 1996

Brian Sigras/dg
REGISTRAR
PK32795.

D.L. 632



REM. S.W. 1/4
D.L. 632

D.L. 629

LOT 1
PLAN PGP36222

LOT 1
PLAN PGP40335

D.L. 1542

I, RONALD L. JOHNS, A BRITISH COLUMBIA LAND SURVEYOR, OF PRINCE GEORGE, IN BRITISH COLUMBIA, CERTIFY THAT I WAS PRESENT AT AND PERSONALLY SUPERINTENDED THE SURVEY REPRESENTED BY THIS PLAN AND THAT THE SURVEY AND PLAN ARE CORRECT. THE SURVEY WAS COMPLETED ON THE 6th DAY OF JULY, 1994

R.L. Johns
R.L. JOHNS, B.C.L.S.

THIS PLAN LIES WITHIN THE FRASER-FORT GEORGE REGIONAL DISTRICT.

R. L. JOHNS LAND SURVEYING LTD.
LEGAL AND ENGINEERING SURVEYS
240 VICTORIA STREET
PRINCE GEORGE, B.C. V2L 2J4
PHONE: (604)562-5753
FAX: (604)562-5703