

# 26FF-226

JK31308  
 Plan # 5-107-008

PLAN NO. PGP 40291

Deposited in the Land Title Office at Prince George this 6 day of AUG. 1996

## REFERENCE PLAN OF EASEMENT WITHIN THE REMAINDER PARCEL Z(6748F), PLAN 1268, DISTRICT LOT 343, CARIBOO DISTRICT.

Pursuant to Section 99 of the Land Title Act.

B.C.G.S. 93G.097

Scale: 1: 5000 (Distances are in metres)



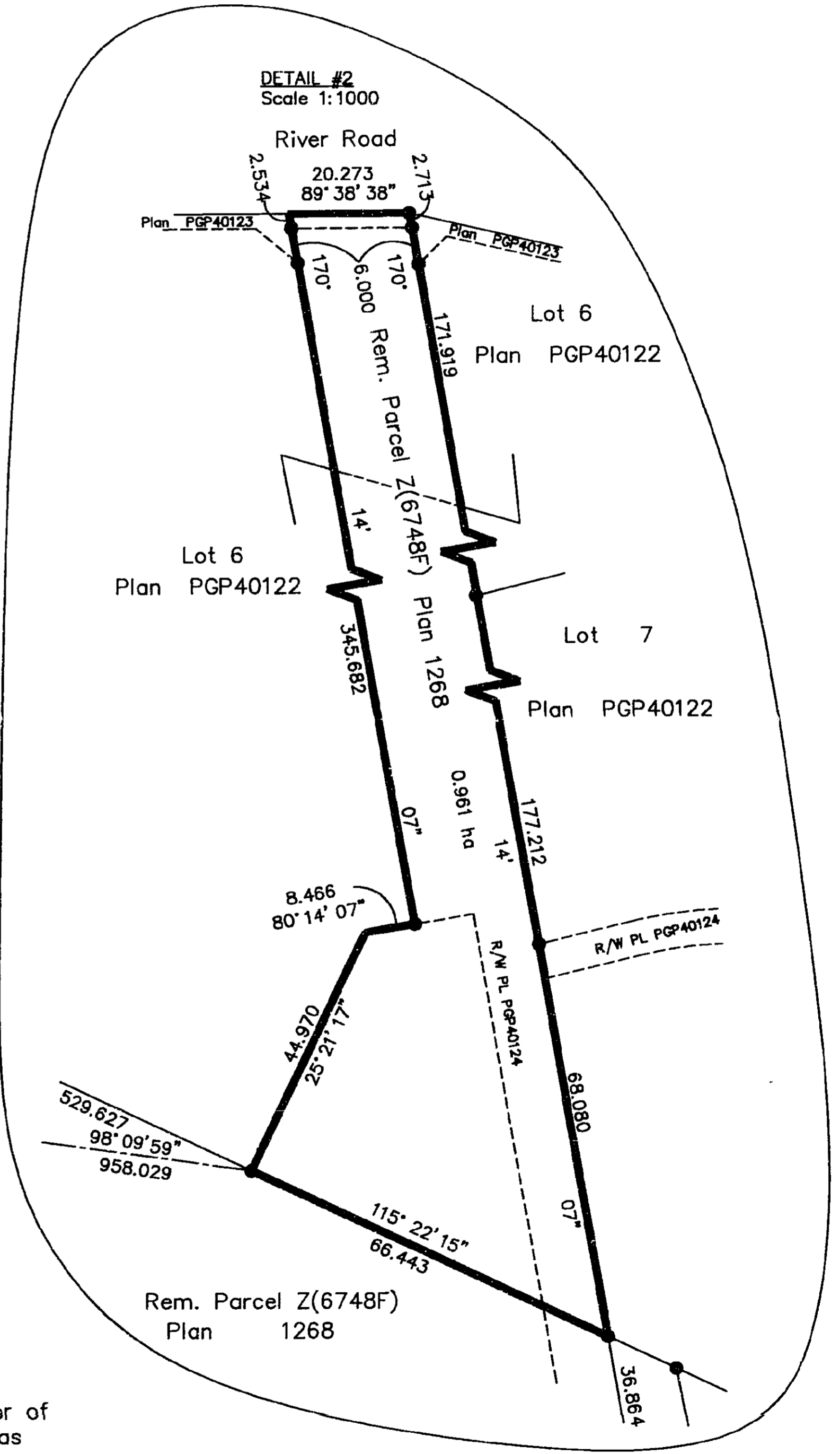
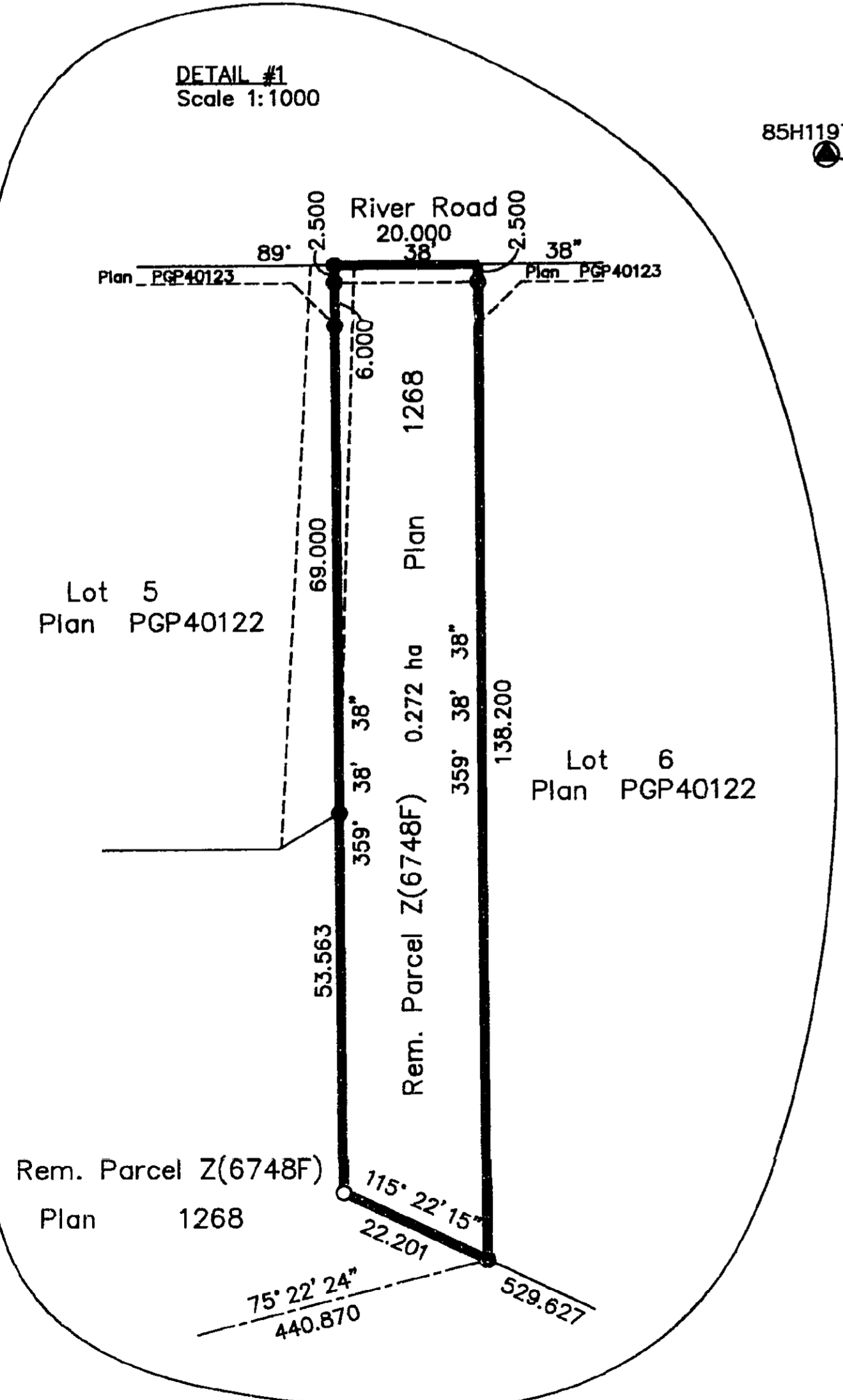
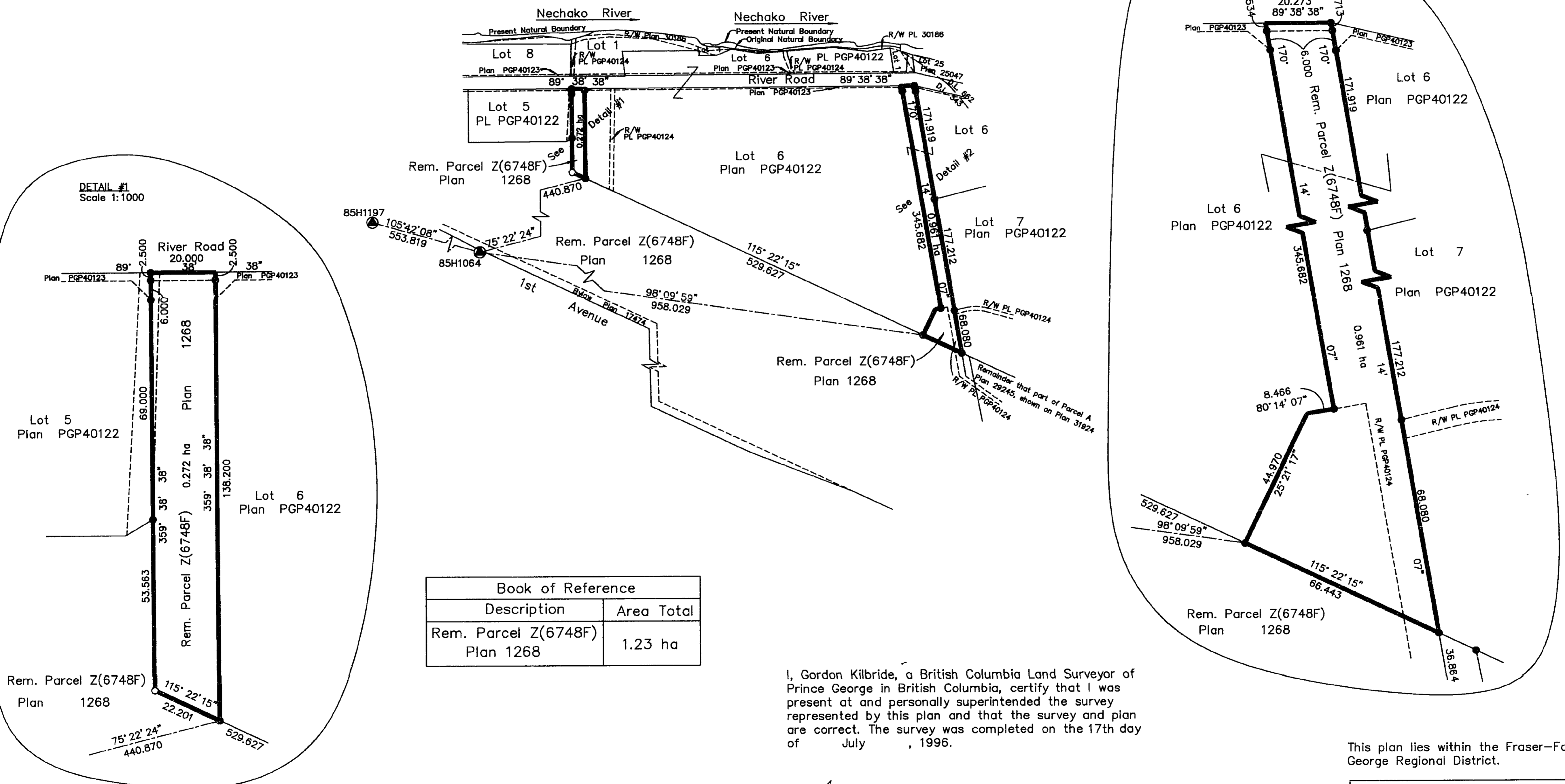
Grid bearings are derived from observations between control monuments 85H1197 and 85H1064, integrated survey area number 39, City of Prince George, B.C.

### LEGEND

- Standard Iron Post Found
- Standard Iron Post Placed
- ⊙ Control Monument Found

Note: This plan shows ground level measured distances. Prior to computation of U.T.M. co-ordinates multiply by the combined factor 0.99951350.

*BRIAN A.A. BIGGINS*  
 REGISTRAR  
*Pa: de*



Book of Reference	
Description	Area Total
Rem. Parcel Z(6748F) Plan 1268	1.23 ha

I, Gordon Kilbride, a British Columbia Land Surveyor of Prince George in British Columbia, certify that I was present at and personally superintended the survey represented by this plan and that the survey and plan are correct. The survey was completed on the 17th day of July, 1996.

*Gordon Kilbride*  
 Gordon Kilbride, B.C.L.S.  
 LTO Client No. 010909

This plan lies within the Fraser-Fort George Regional District.

**KILBRIDE LAND SURVEYING LTD.**  
 British Columbia Land Surveyors  
 Prince George, B.C.  
 Ph: (604) 562-1196 Fax: 562-3656

F.B.- RA	D.L.- 343	File No. -960518
----------	-----------	------------------