

26-FF-226

PLAN OF STATUTORY RIGHT OF WAY THROUGH
 LOTS 8, 9, & 29
 PLAN PGP 40290
 DISTRICT LOT 2425
 CARIBOO DISTRICT
 PURSUANT TO SECTION 214 OF THE LAND TITLE ACT

PLAN No. PGP 40289

DEPOSITED IN THE LAND TITLE OFFICE
 AT PRINCE GEORGE, B.C., THIS 2 DAY OF August, 1996

B.C.G.S. 93J.006

B. Bigelow
 REGISTRAR
 PK31145



SCALE = 1 : 500
 ALL DISTANCES ARE IN METRES.

THIS PLAN SHOWS GROUND-LEVEL MEASURED DISTANCES.
 PRIOR TO COMPUTATION OF U.T.M. COORDINATES, MULTIPLY
 BY COMBINED FACTOR 0.99948172.

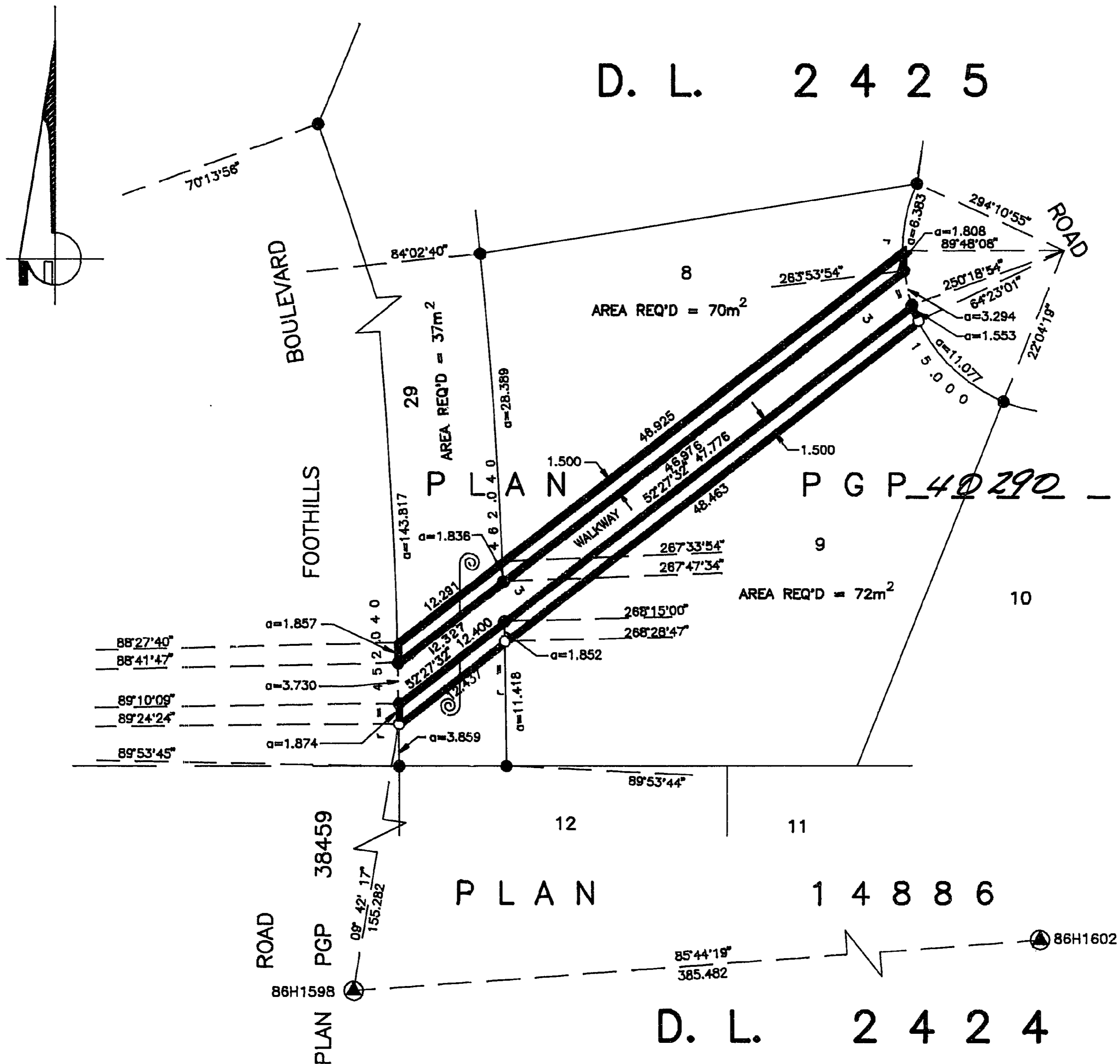
GRID BEARINGS ARE DERIVED FROM OBSERVATIONS
 BETWEEN CONTROL MONUMENTS 86H1598, AND 86H1602,
 INTEGRATED SURVEY AREA NUMBER 39.

LEGEND

- STANDARD IRON PIN FOUND
- STANDARD IRON PIN PLACED
- ▲ CONTROL MONUMENT

BOOK OF REFERENCE

DESCRIPTION	AREA REQUIRED
LOT 8, PLAN PGP_40290 D.L. 2425	70m ²
LOT 9, PLAN PGP_40290 D.L. 2425	72m ²
LOT 29, PLAN PGP_40290 D.L. 2425	37m ²



I, RONALD L. JOHNS, A BRITISH COLUMBIA LAND SURVEYOR, OF PRINCE GEORGE, IN BRITISH COLUMBIA, CERTIFY THAT I WAS PRESENT AT AND PERSONALLY SUPERINTENDED THE SURVEY REPRESENTED BY THIS PLAN AND THAT THE SURVEY AND PLAN ARE CORRECT. THE SURVEY WAS COMPLETED ON THE 16th DAY OF JUNE, 1995.

THIS PLAN LIES WITHIN THE FRASER-FORT GEORGE REGIONAL DISTRICT.

R. L. JOHNS LAND SURVEYING LTD.
 LEGAL AND ENGINEERING SURVEYS
 240 VICTORIA STREET
 PRINCE GEORGE, B. C. V2L 2J4
 PHONE: (604)562-5759
 FAX: (604)562-5703

R.L. Johns
 R.L. JOHNS, B.C.L.S.