

26FF-226

PLAN OF STATUTORY RIGHT OF WAY THROUGH
REMAINDER S.W. 1/4 DISTRICT LOT 2425
CARIBOO DISTRICT

PURSUANT TO SECTION 214 OF THE LAND TITLE ACT.

B.C.G.S. 93J.006

PLAN No. PGP 40288

DEPOSITED IN THE LAND TITLE OFFICE
AT PRINCE GEORGE, B.C., THIS 2
DAY OF August, 1996

"B. Biggs inc"
REGISTRAR
PK31143



SCALE = 1 : 1000

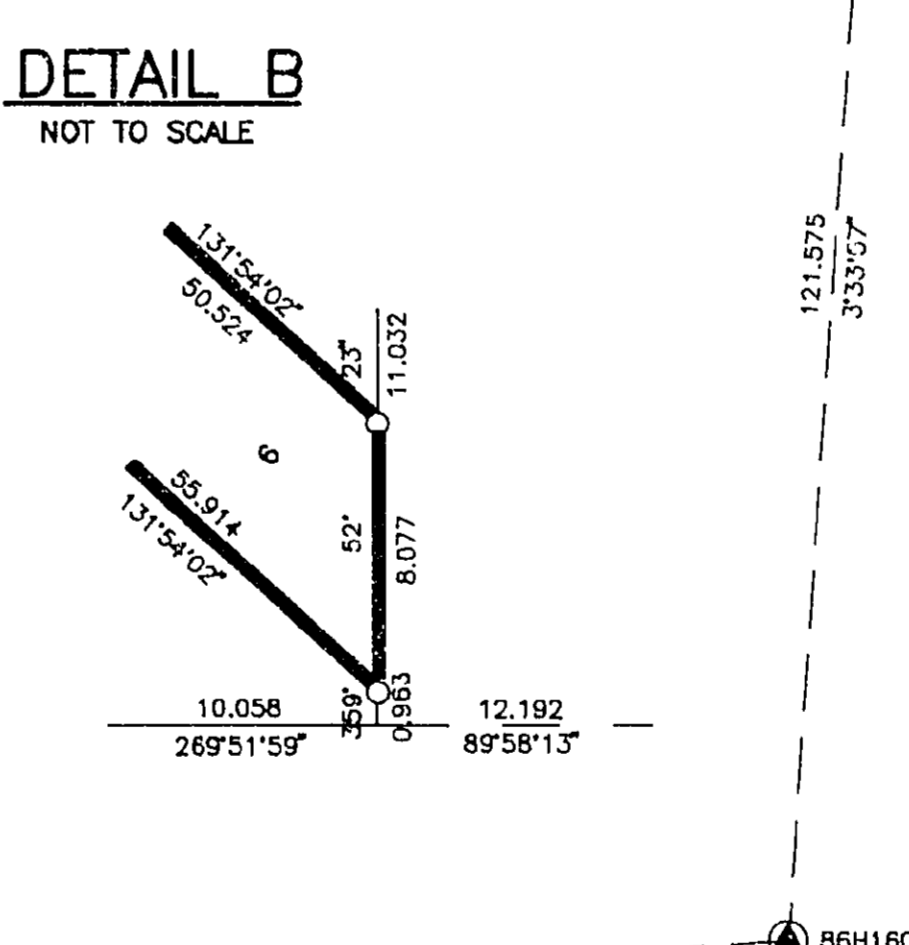
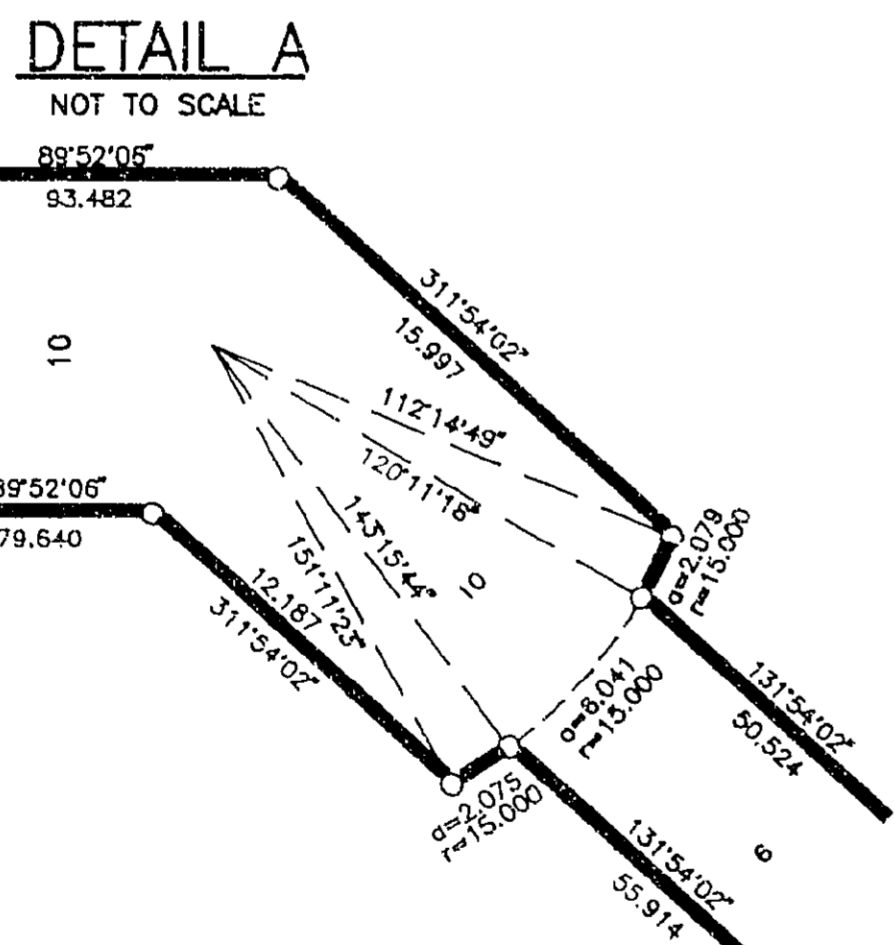
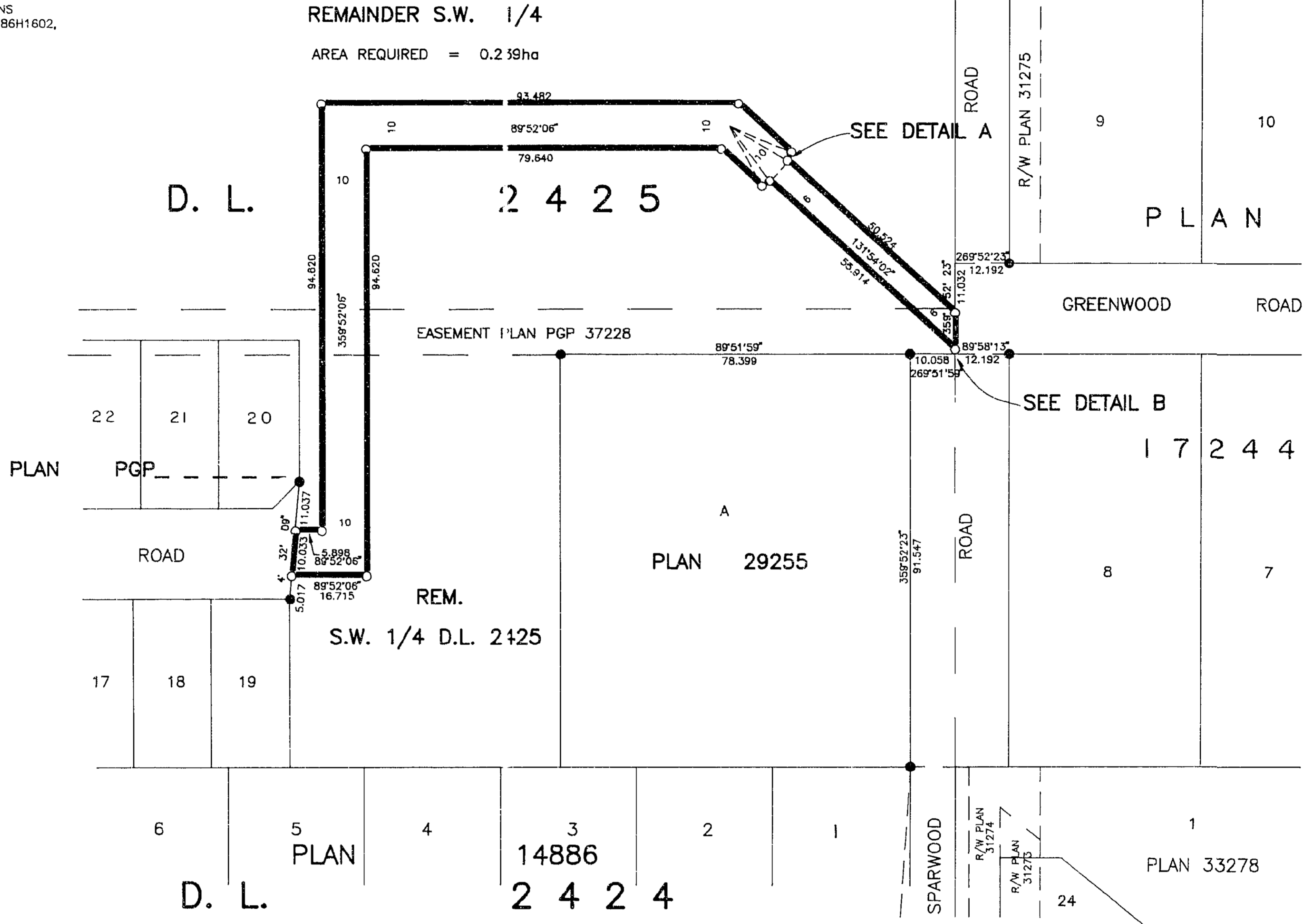
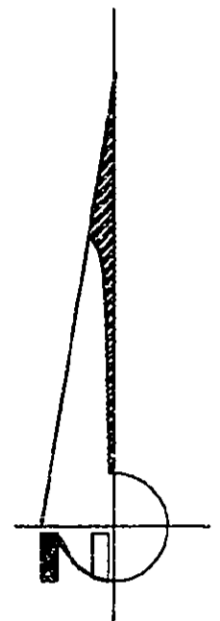
ALL DISTANCES ARE IN METRES.

THIS PLAN SHOWS GROUND-LEVEL MEASURED DISTANCES.
PRIOR TO COMPUTATION OF U.T.M. COORDINATES, MULTIPLY
BY COMBINED FACTOR 0.99948207.

GRID BEARINGS ARE DERIVED FROM OBSERVATIONS
BETWEEN CONTROL MONUMENTS 86H1598, AND 86H1602,
INTEGRATED SURVEY AREA NUMBER 39.

LEGEND

- STANDARD IRON PIN FOUND
- STANDARD IRON PIN PLACED
- ⊕ CONTROL MONUMENT



I, RONALD L. JOHNS, A BRITISH COLUMBIA LAND SURVEYOR, OF PRINCE GEORGE, IN BRITISH COLUMBIA, CERTIFY THAT I WAS PRESENT AT AND PERSONALLY SUPERINTENDED THE SURVEY REPRESENTED BY THIS PLAN AND THAT THE SURVEY AND PLAN ARE CORRECT. THE SURVEY WAS COMPLETED ON THE 27th DAY OF JUNE, 1995.

R.L. JOHNS, B.C.L.S.

THIS PLAN LIES WITHIN THE FRASER-FORT GEORGE REGIONAL DISTRICT.

R. L. JOHNS LAND SURVEYING LTD.
LEGAL AND ENGINEERING SURVEYS
240 VICTORIA STREET
PRINCE GEORGE, B. C. V2L 2J4
PHONE: (604)562-5759
FAX: (604)562-5703