

POSTING PLAN OF PART OF  
LOT 3, PLAN 1338  
DISTRICT LOT 2440  
CARIBOO DISTRICT

B.C.G.S. 93G.097

PURSUANT TO SECTION 68 OF THE LAND TITLE ACT.



SCALE = 1 : 1000  
ALL DISTANCES ARE SHOWN IN METRES.

THIS PLAN SHOWS GROUND-LEVEL MEASURED DISTANCES.  
PRIOR TO COMPUTATION OF U.T.M. COORDINATES, MULTIPLY  
BY COMBINED FACTOR 0.99951347.

GRID BEARINGS ARE DERIVED FROM OBSERVATIONS  
BETWEEN CONTROL MONUMENTS 86H1802, AND 86H1600,  
INTEGRATED SURVEY AREA NUMBER 39, PRINCE GEORGE.

LEGEND

- STANDARD IRON POST FOUND
- STANDARD IRON POST PLACED
- ⊙ CONTROL MONUMENT

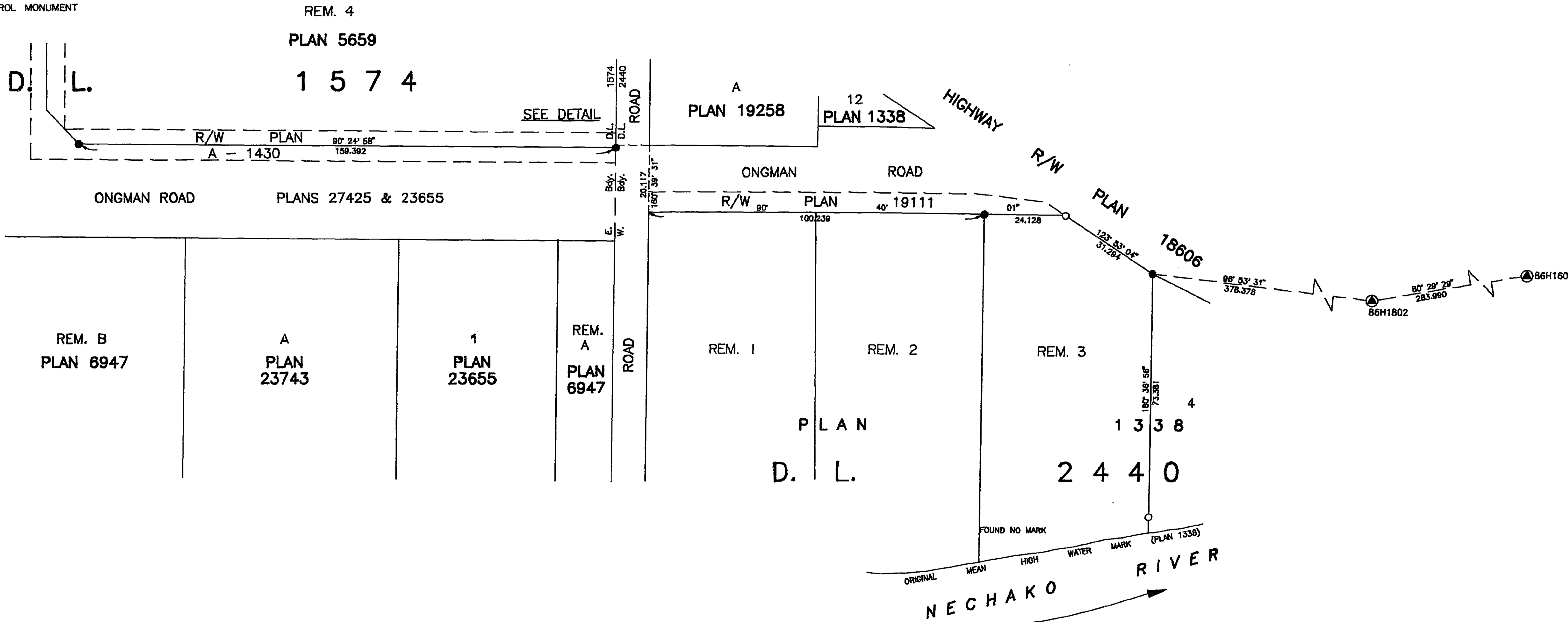
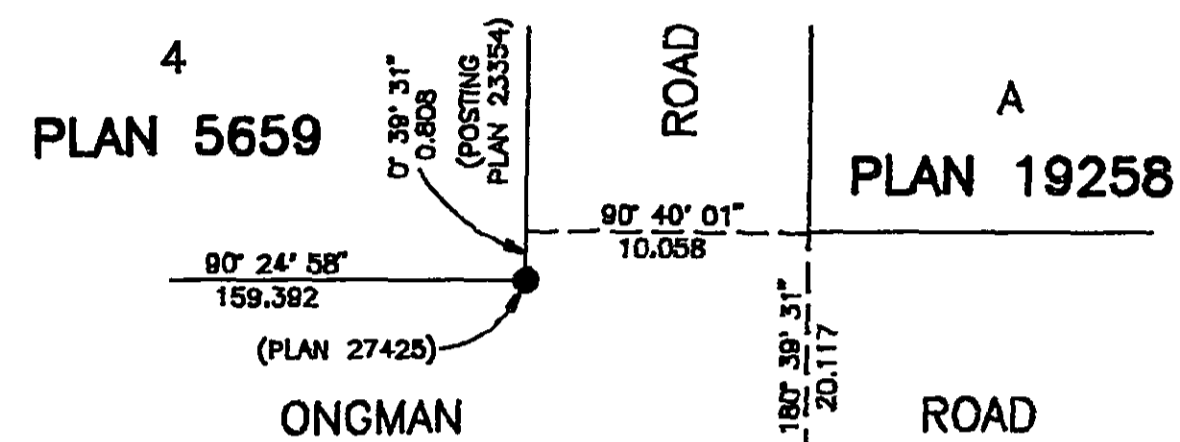
26FF-226

PLAN No. PGP 40215

DEPOSITED IN THE LAND TITLE OFFICE  
AT PRINCE GEORGE, B.C., THIS 30  
DAY OF JULY, 1996

REGISTRAR

DETAIL  
NOT TO SCALE



I, RONALD L. JOHNS, A BRITISH COLUMBIA LAND SURVEYOR, OF PRINCE GEORGE, IN BRITISH COLUMBIA, CERTIFY THAT I WAS PRESENT AT AND PERSONALLY SUPERINTENDED THE SURVEY REPRESENTED BY THIS PLAN AND THAT THE SURVEY AND PLAN ARE CORRECT. THE SURVEY WAS COMPLETED ON THE 26TH DAY OF JUNE, 1996.

*R.L. Johns*  
R.L. JOHNS, B.C.L.S., C.L.S.

THIS PLAN LIES WITHIN THE FRASER-FORT GEORGE REGIONAL DISTRICT.

R. L. JOHNS LAND SURVEYING LTD.  
LEGAL AND ENGINEERING SURVEYS  
240 VICTORIA STREET  
PRINCE GEORGE, B. C. V2L 2J4  
PHONE: (604)562-5759  
FAX: (604)562-5703