

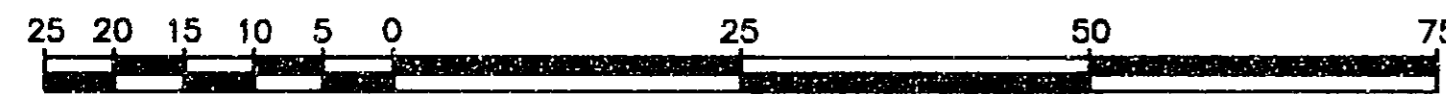
26FF-226

PLAN OF STATUTORY RIGHT OF WAY
THROUGH LOT 1, PLAN 7867, AND
REMAINDER OF LOT 1, PLAN 9547,
DISTRICT LOT 1433, CARIBOO DISTRICT.
B.C.G.S. 93G.097

PLAN NO. PGP 40270

Deposited in the Land Title Office at Prince
George this 29 day of July 1996

Scale: 1 : 1000 (Distances are in metres)

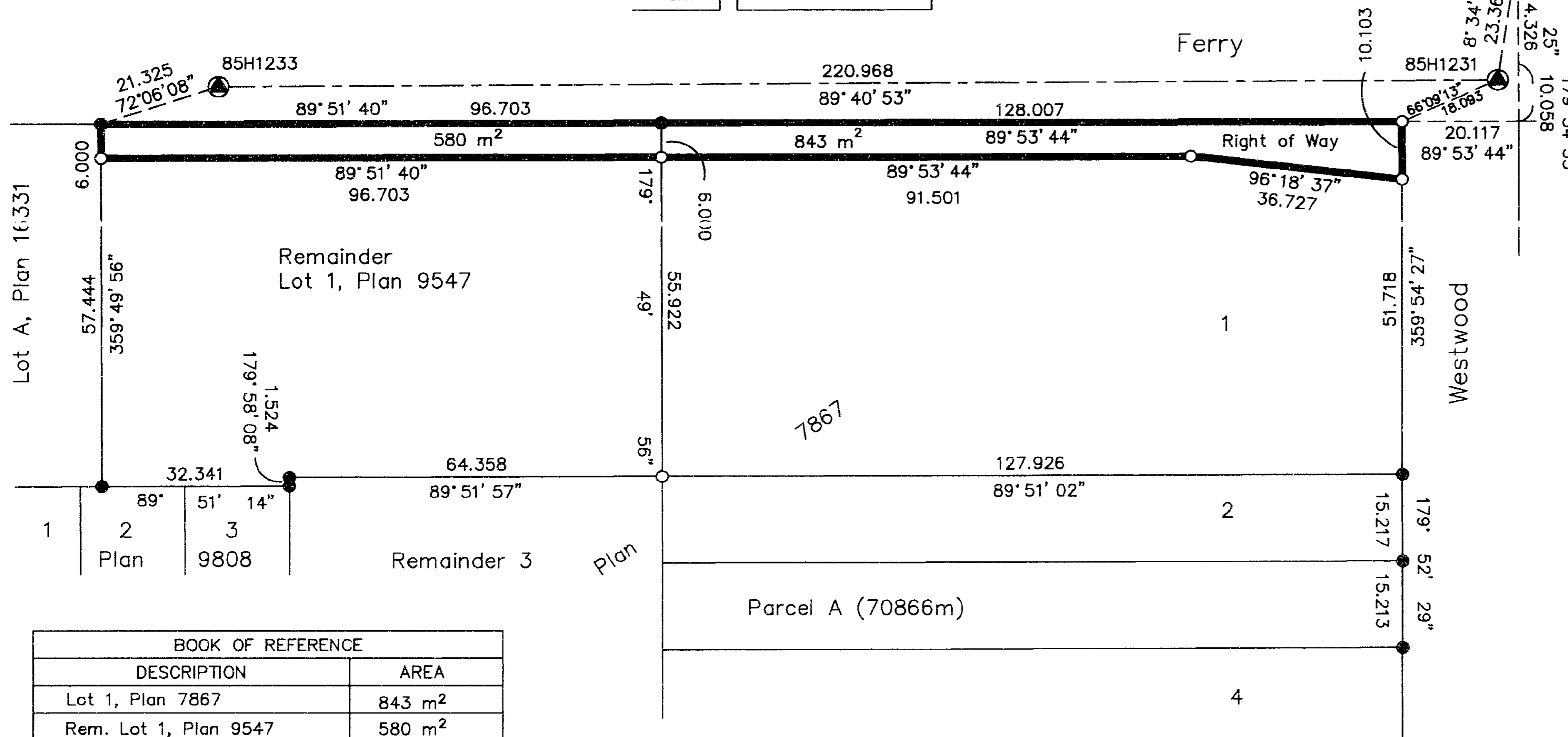
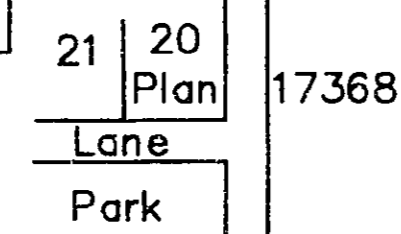


Grid bearings are derived from observations between
control monuments 85H1233 and 85H1231, integrated
survey area number 39, City of Prince George, B.C.

LEGEND

- ⊙ Standard Concrete Post Found
- Standard Iron Post Found
- Standard Iron Post Placed
- ⊕ Control Monument Found

Note: This plan shows ground level measured
distances. Prior to computation of U.T.M.
co-ordinates multiply by the combined
factor 0.99951013



BOOK OF REFERENCE	
DESCRIPTION	AREA
Lot 1, Plan 7867	843 m ²
Rem. Lot 1, Plan 9547	580 m ²

Remainder
D.L. 8179

OPCON destroyed
position taken from
Plan PGP36671

I, Gordon Kilbride, a British Columbia Land Surveyor of
Prince George in British Columbia, certify that I was
present at and personally superintended the survey
represented by this plan and that the survey and plan
are correct. The survey was completed on the 5th day
of July, 1996.

Gordon Kilbride

Gordon Kilbride, B.C.L.S.
LTO Client No. 010909

This plan lies within the Fraser-Fort
George Regional District.

KILBRIDE LAND SURVEYING LTD.
British Columbia Land Surveyors
Prince George, B.C.
Ph: (604) 562-1196 Fax: 562-3656

F.B.- VJ 7	D.L.- 1433	FILE No. 960462
------------	------------	-----------------