

26FF-226

PLAN NO. PGP 40252

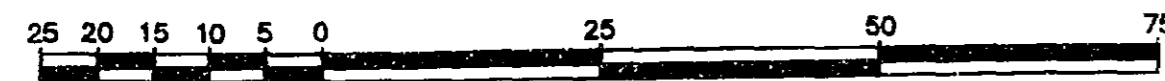
BCTel
REFERENCE PLAN OF STATUTORY RIGHT OF
WAY WITHIN REMAINDER OF LOT D, PLAN
16556, DISTRICT LOT 2062, CARIBOO DISTRICT.
PURSUANT TO SECTION 99 1(e) OF THE LAND TITLE ACT.

Deposited in the Land Title Office at Prince
George this 23 day of July 1996

Brian Bigras/dg
REGISTRAR
PK 29042

B.C.G.S. 93G.097

Scale: 1 : 1000 (Distances are in metres)

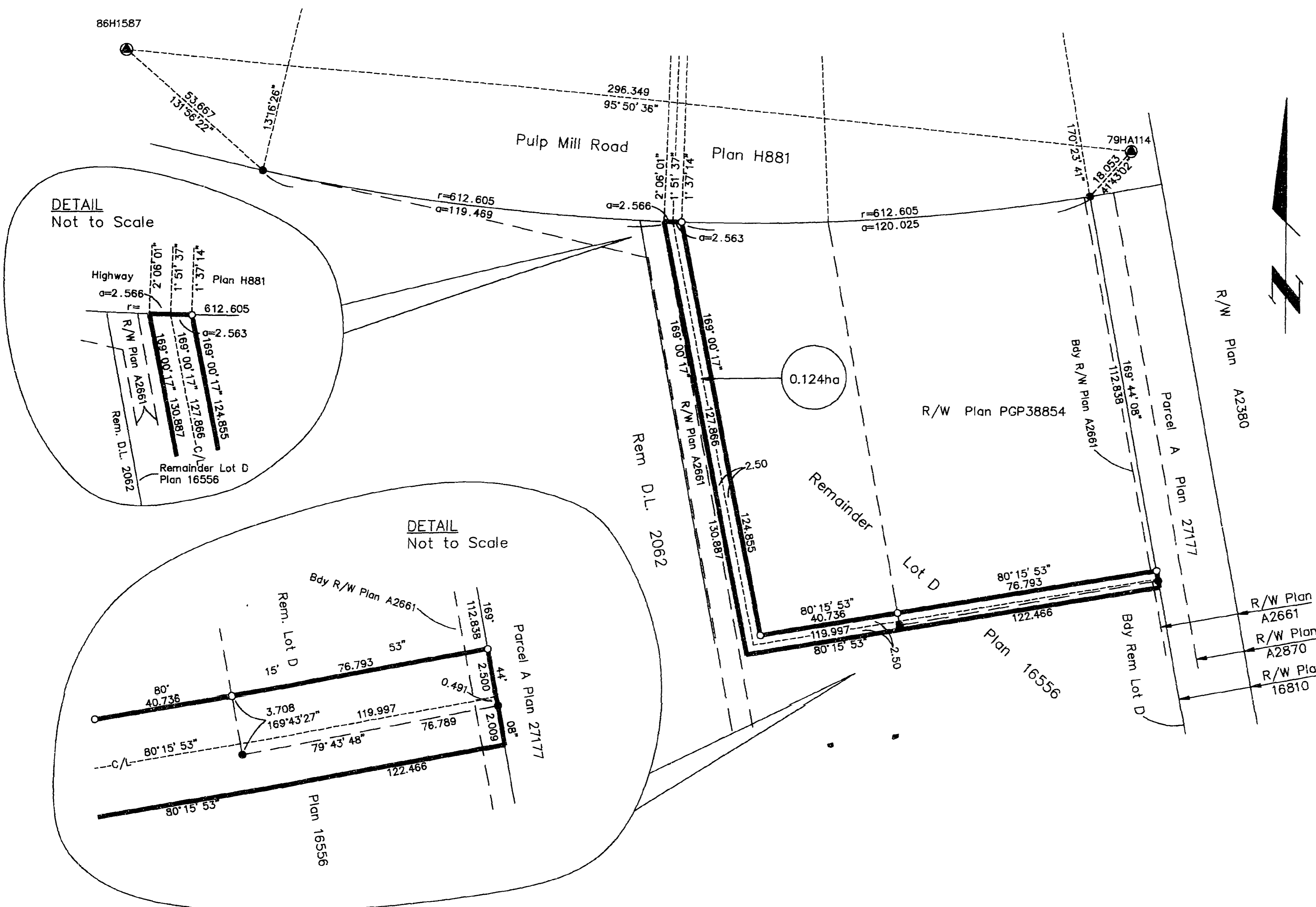


Grid bearings are derived from observations between
control monuments 86H1587 and 79HA114, integrated
survey area number 39, City of Prince George, B.C.

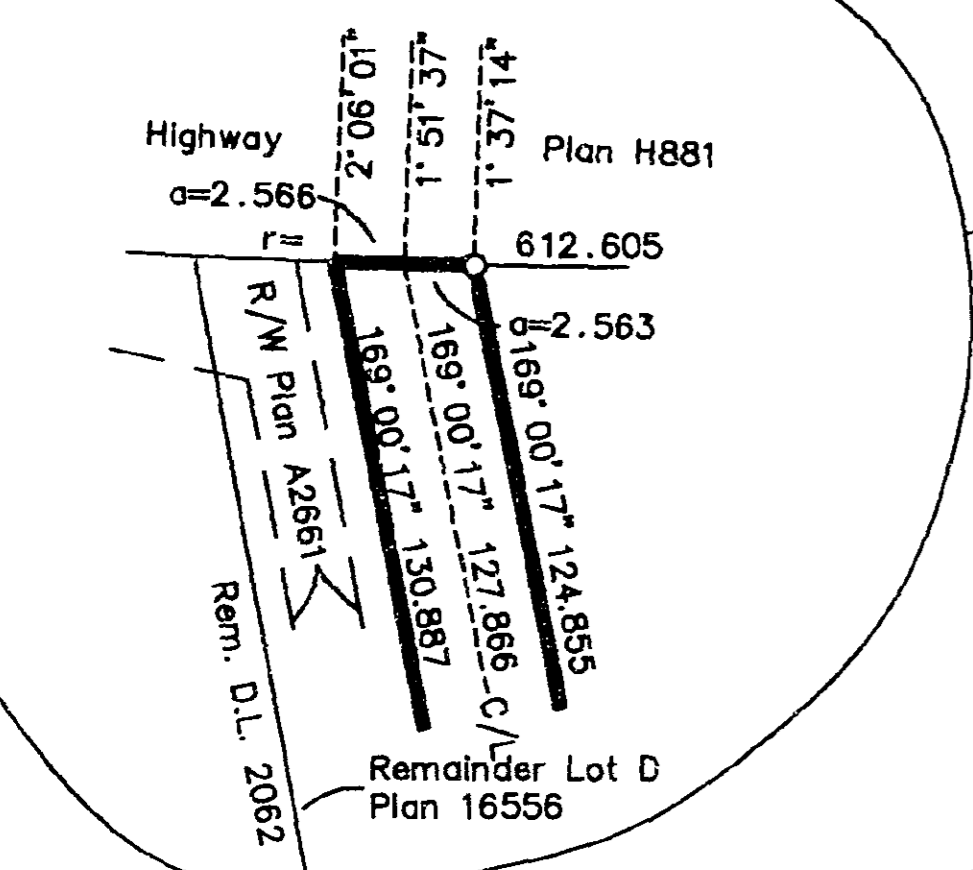
LEGEND

- Standard Iron Post Found
- Standard Iron Post Placed
- ⊙ Control Monument

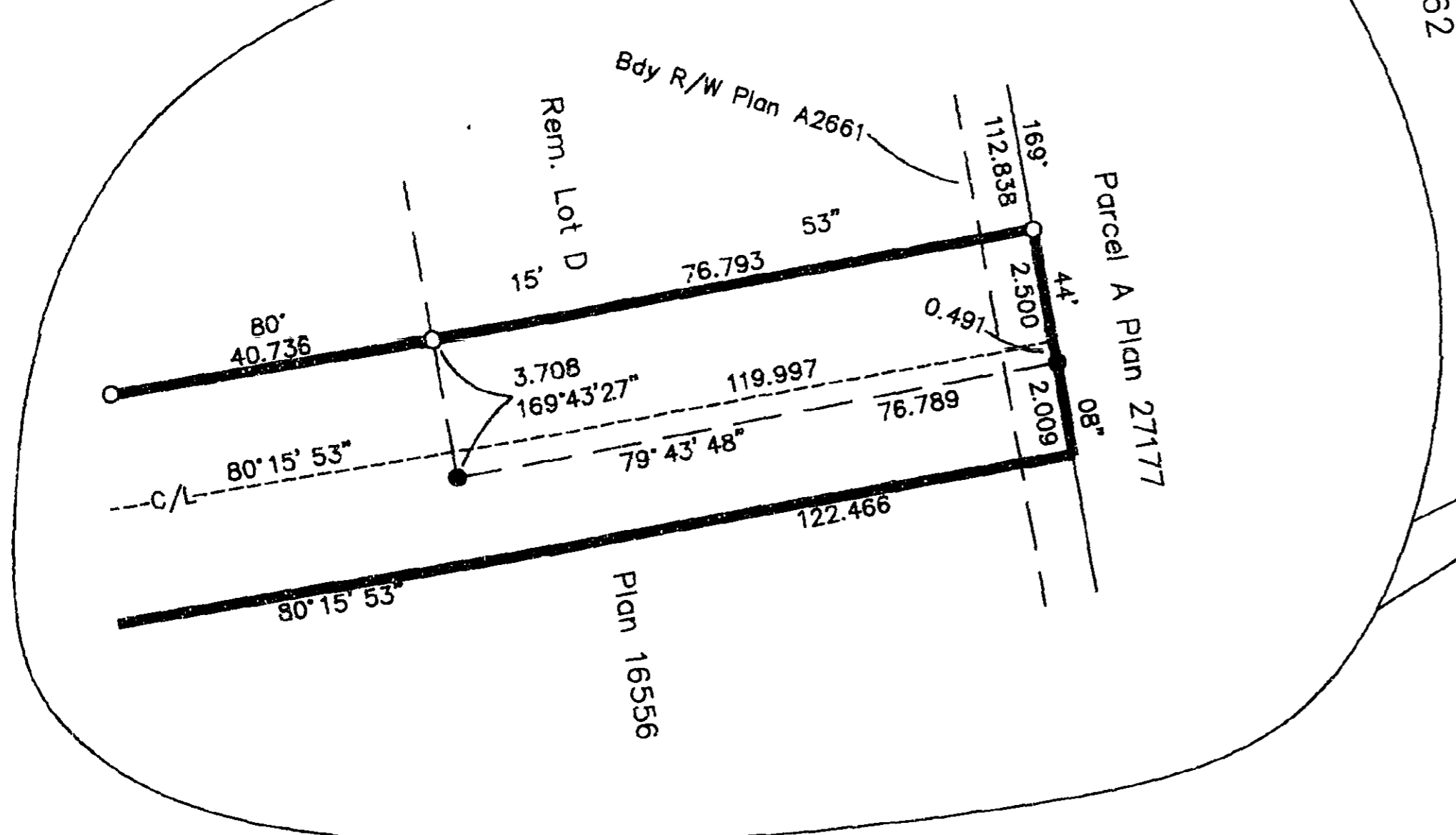
Note: This plan shows ground level measured
distances. Prior to computation of U.T.M.
co-ordinates multiply by the combined
factor 0.99951253.



DETAIL
Not to Scale



DETAIL
Not to Scale



I, Dale L. Keown, a British Columbia Land Surveyor of
Prince George in British Columbia, certify that I was
present at and personally superintended the survey
represented by this plan and that the survey and plan
are correct. The survey was completed on the 6th day
of October, 1995.

Dale Keown
Dale L. Keown, B.C.L.S.

This plan lies within the Fraser-Fort
George Regional District.

KILBRIDE LAND SURVEYING LTD.
British Columbia Land Surveyors
Prince George, B.C.
Ph: (604) 562-1196 Fax: 562-3656

F.B.- VF52	D.L.- 2062	REF. NO.- 950766
------------	------------	------------------