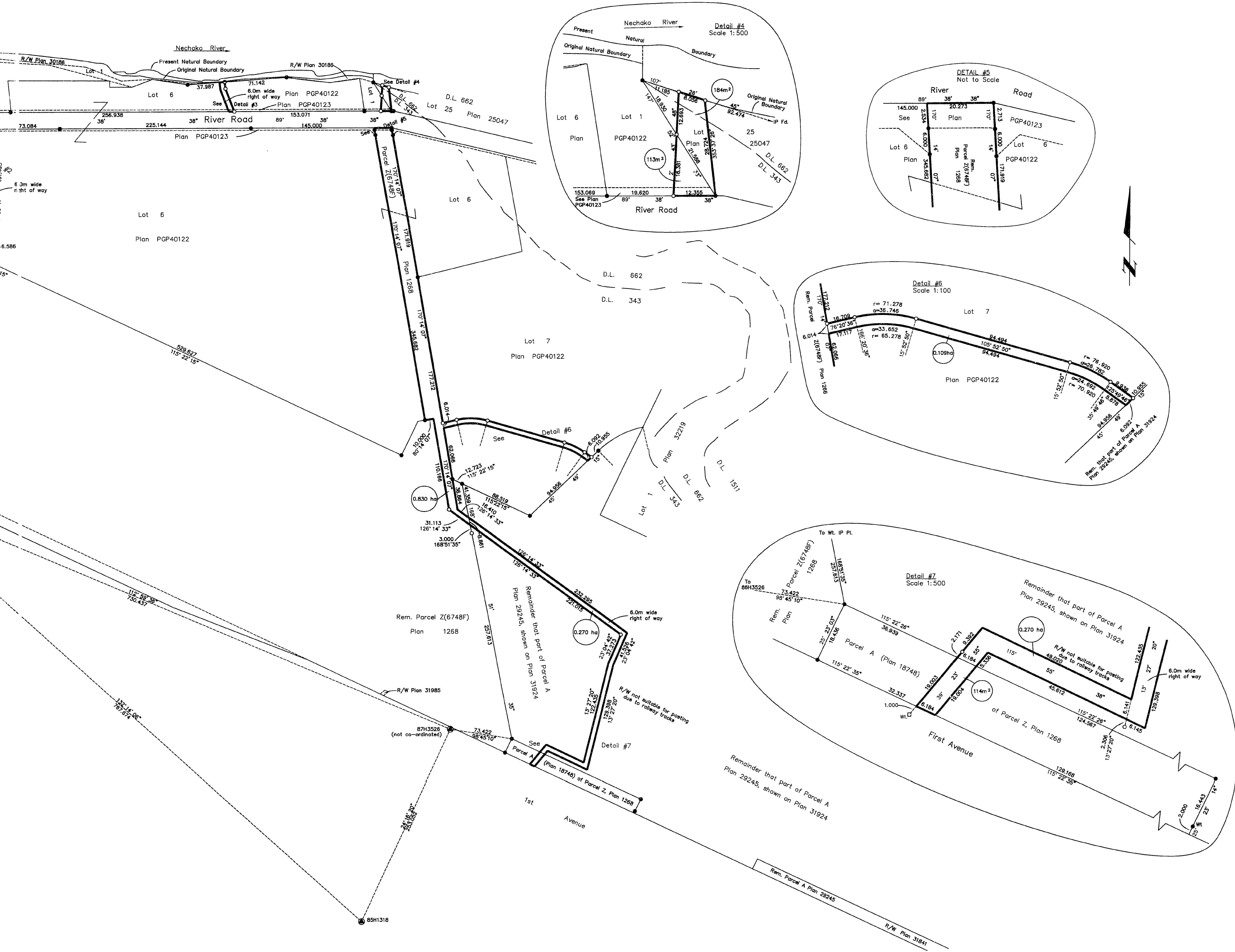


PLAN NO. PGP40124

Deposited in the Land Title Office at Prince George this 3/day of June 1996.

*B. Bagnall*  
REGISTRAR  
PK23015, PK23016



REFERENCE PLAN OF STATUTORY RIGHT OF WAY WITHIN LOTS 1, 3, 5, 6, 7 AND 8, PLAN PGP 40122, REMAINDER PARCEL Z(6748F), PLAN 1268, LOT 25, PLAN 25047, REMAINDER OF THAT PART OF PARCEL A, PLAN 29245, SHOWN ON PLAN 31924 AND PARCEL A, (PLAN 18748) OF PARCEL Z, PLAN 1268, DISTRICT LOTS 343 AND 662, CARIBOO DISTRICT.

Pursuant to Section 113 of the Land Title Act.

B.C.G.S. 93G.097  
Scale: 1 : 2000 (Distances are in metres)



Grid bearings are derived from observations between control monuments 85H1197 and 85H1064, integrated survey area number 39, City of Prince George, B.C.

LEGEND

- Standard Iron Post Found
- ⊙ Control Monument Found
- △ Traverse Hub Placed

Note: This plan shows ground level measured distances. Prior to computation of U.T.M. co-ordinates multiply by the combined factor 0.99951350.

I, Dale L. Keown, a British Columbia Land Surveyor of Prince George in British Columbia, certify that I was present at and personally superintended the survey represented by this plan and that the survey and plan are correct. The survey was completed on the 31st day of May, 1996.

*Dale L. Keown*  
Dale L. Keown, B.C.L.S.  
LTO Client No. 010908

Book of Reference	
Description	Area
Lot 1, Plan PGP40122	494m <sup>2</sup>
Lot 3, Plan PGP40122	314m <sup>2</sup>
Lot 5, Plan PGP40122	455m <sup>2</sup>
Lot 6, Plan PGP40122	0.119ha.
Lot 7, Plan PGP40122	0.109ha
Lot 8, Plan PGP40122	38m <sup>2</sup>
Lot 25, Plan 25047	184m <sup>2</sup>
Rem. Parcel Z(6748F), Plan 1268	0.840ha.
Parcel A (Plan 18748) of Parcel Z, Plan 1268	114m <sup>2</sup>
Rem. that part Parcel A, Plan 29245 shown on Plan 31924	0.270ha.

This plan lies within the Fraser-Fort George Regional District.

26-FF-226

