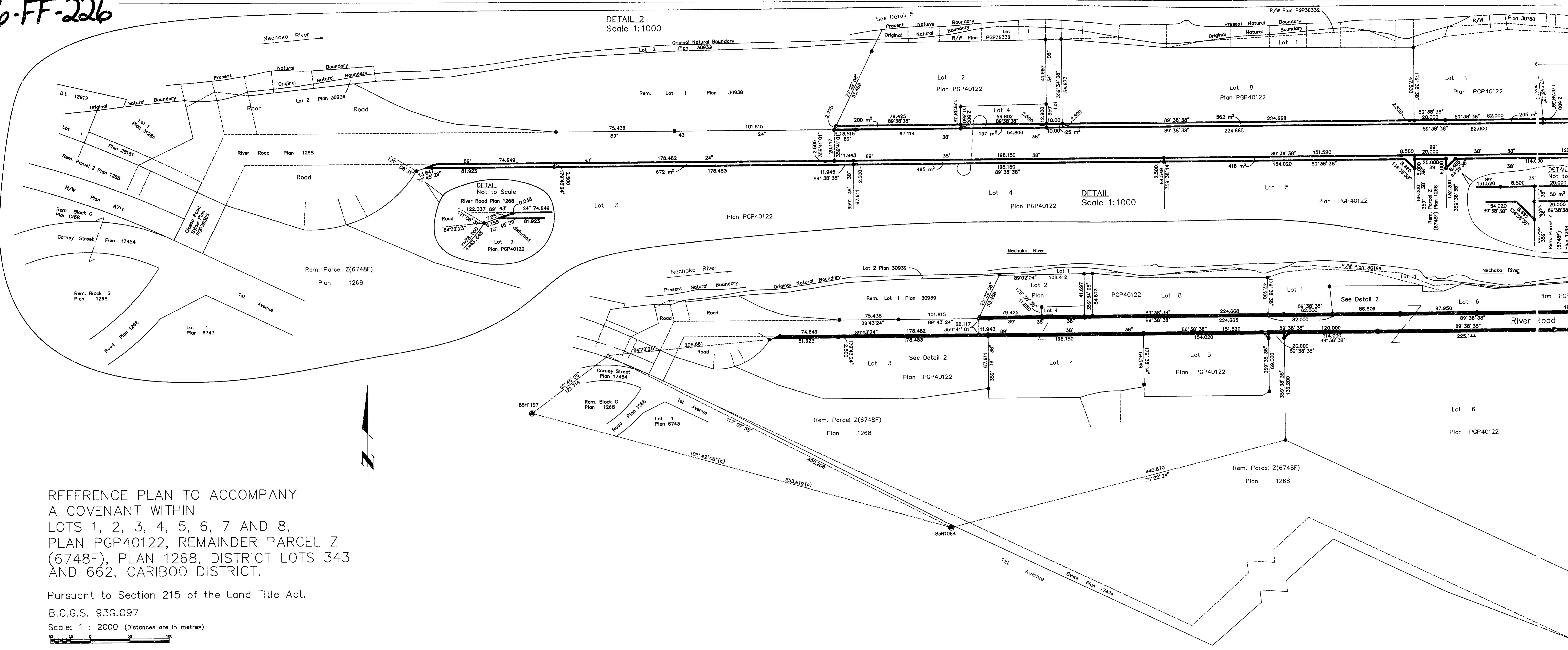




26-FF-226



REFERENCE PLAN TO ACCOMPANY  
 A COVENANT WITHIN  
 LOTS 1, 2, 3, 4, 5, 6, 7 AND 8,  
 PLAN PGP40122, REMAINDER PARCEL Z  
 (6748F), PLAN 1268, DISTRICT LOTS 343  
 AND 662, CARIBOO DISTRICT.

Pursuant to Section 215 of the Land Title Act.  
 B.C.G.S. 93G.097

Scale: 1 : 2000 (Distances are in metres)

Grid bearings are derived from observations between  
 control monuments 85H1197 and 85H1064, integrated  
 survey area number 39, City of Prince George, B.C.

**LEGEND**  
 ● Standard Iron Post Found  
 ⊙ Control Monument Found  
 △ Traverse Hub Placed

Note: This plan shows ground level measured  
 distances. Prior to computation of U.T.M.  
 co-ordinates multiply by the combined  
 factor 0.99951350.

This plan lies within the Fraser-Fort  
 George Regional District.

I, Dale L. Keown, a British Columbia Land Surveyor of  
 Prince George in British Columbia, certify that I was  
 present at and personally superintended the survey  
 represented by this plan and that the survey and plan  
 are correct. The survey was completed on the 13th day  
 of May, 1996.

*Dale Keown*  
 Dale L. Keown, B.C.L.S.  
 LTO Client No. 010908

Book of Reference	
Description	Area
Lot 1, Plan PGP40122	308 m <sup>2</sup>
Lot 2, Plan PGP40122	200 m <sup>2</sup>
Lot 3, Plan PGP40122	672 m <sup>2</sup>
Lot 4, Plan PGP40122	632 m <sup>2</sup>
Lot 5, Plan PGP40122	418 m <sup>2</sup>
Lot 6, Plan PGP40122	0.266 ha.
Lot 7, Plan PGP40122	130 m <sup>2</sup>
Lot 8, Plan PGP40122	562 m <sup>2</sup>
Rem Pcl Z(6748F), Plan 1268	101 m <sup>2</sup>