

26FF-226

PLAN NO. PGP 40112

Deposited in the Land Title Office at Prince George this 10 day of June 1996

Brian Bigras / dg
REGISTRAR
PK22031

PLAN OF STATUTORY
RIGHT OF WAY THROUGH PART OF
THE REMAINDER OF DISTRICT LOT 2611,
CARIBOO DISTRICT.
Pursuant to Section 113 of the Land Title Act.
B.C.G.S. 93G.086,087

Scale: 1 : 2500 (Distances are in metres)

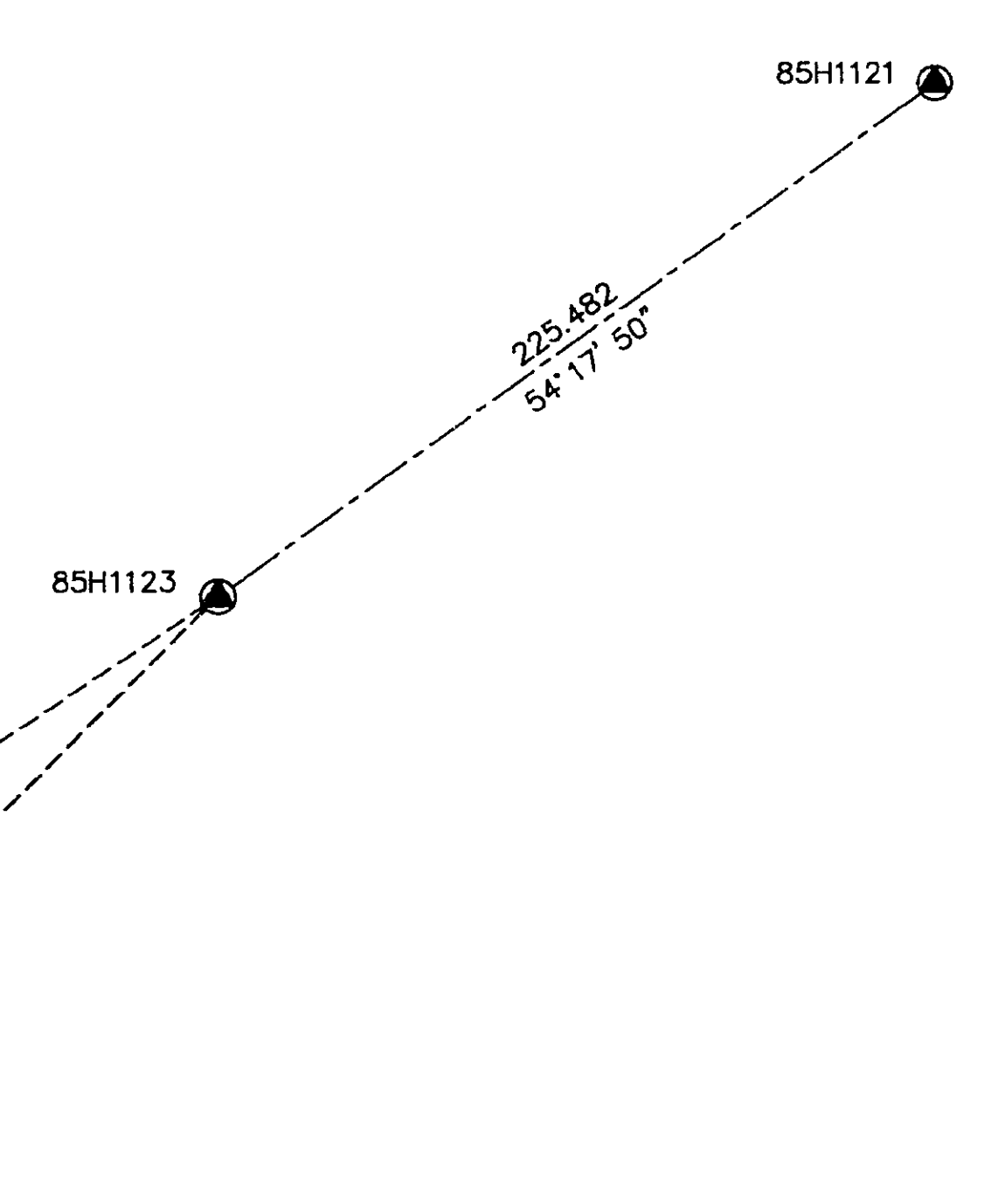
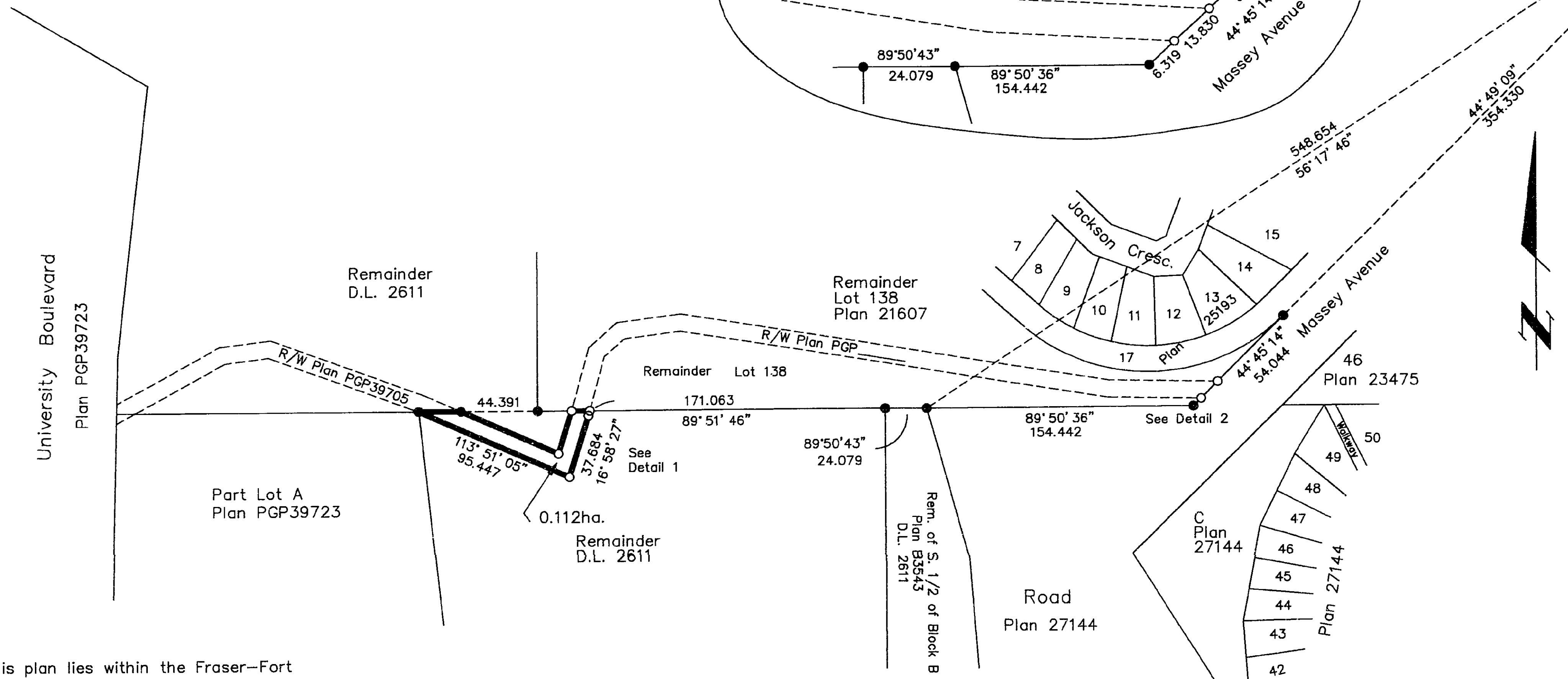
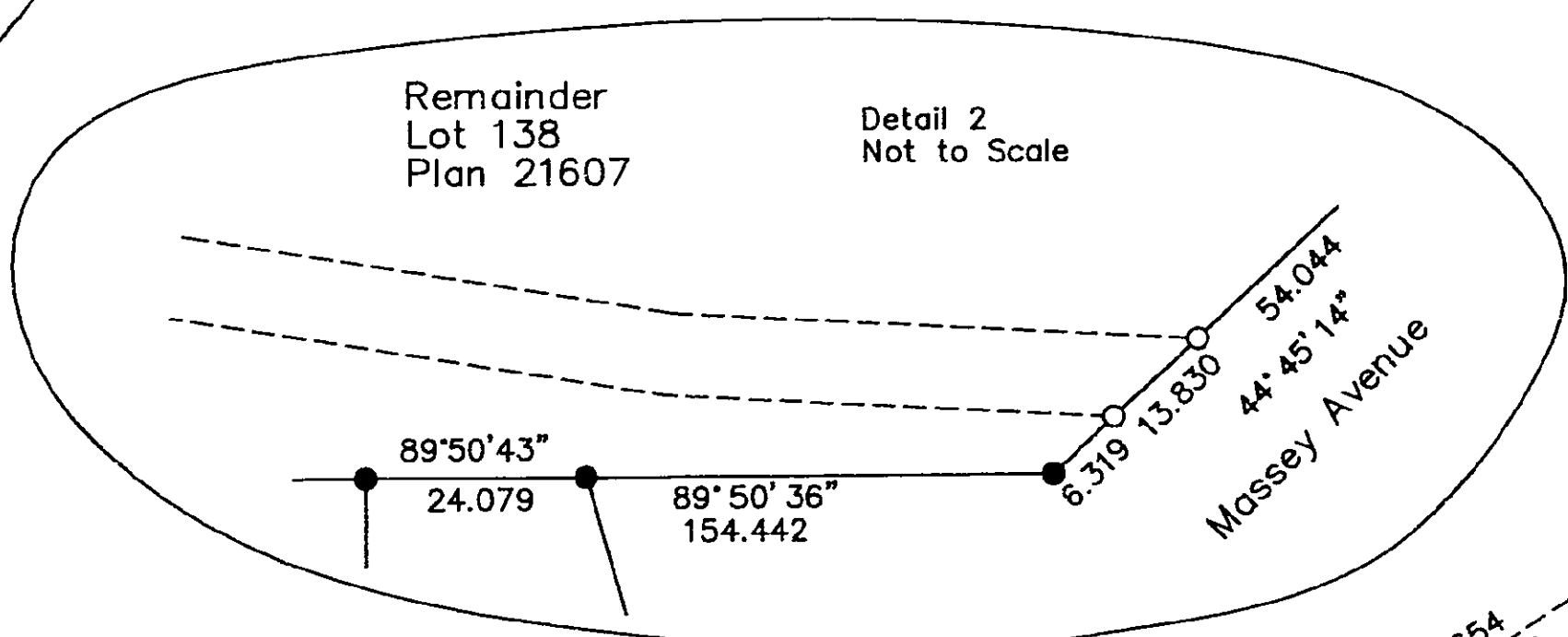
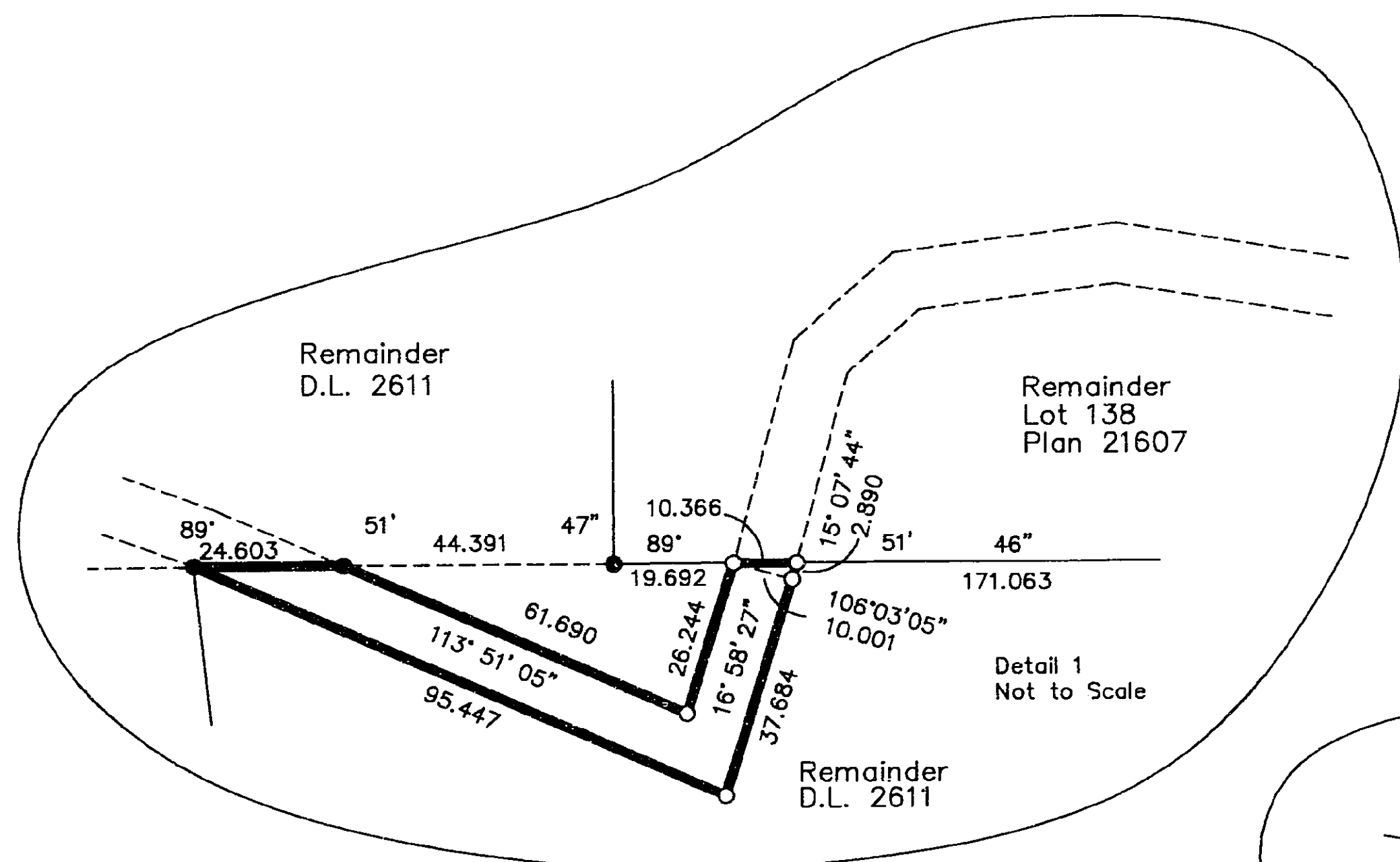


LEGEND

- Standard Iron Post Found
- Standard Iron Post Placed
- ⊙ Control Monument Found

Grid bearings are derived from observations between control monuments 85H1121 and 85H1123, integrated survey area number 39, City of Prince George, B.C.

Note: This plan shows ground level measured distances. Prior to computation of U.T.M. co-ordinates multiply by the combined factor 0.99950792



BOOK OF REFERENCE	
DESCRIPTION	AREA
Rem. D.L. 2611	0.112 ha

I, Gordon Kilbride, a British Columbia Land Surveyor of Prince George in British Columbia, certify that I was present at and personally supervised the survey represented by this plan and that the survey and plan are correct. The survey was completed on the 30th day of August, 1994.

Gordon Kilbride
Gordon Kilbride, B.C.L.S.

I hereby certify that this is the Official Plan of the right of way shown outlined hereon.

Al Baker
For Surveyor General
Victoria, British Columbia
June 5, 1996

This plan lies within the Fraser-Fort George Regional District.

KILBRIDE LAND SURVEYING LTD. British Columbia Land Surveyors Prince George, B.C. Ph: (604) 562-1196 Fax: 562-3656		
F.B.- RA	D.L.- 2611	FILE No. - 940586A