

# 26-FF-226

PGP40107

REFERENCE PLAN OF  
STATUTORY RIGHT WAY OVER  
PART OF THE REMAINDER OF  
DISTRICT LOT 9265,  
CARIBOO DISTRICT.

B.C.G.S. 93G.086

PLAN NO. PGP40107

Deposited in the Land Title Office at Prince  
George this 06 day of June 1996.

*B. Biggs* Per: *EG*  
REGISTRAR  
015-070-531 PK21768

Scale: 1 : 2000 (Distances are in metres)

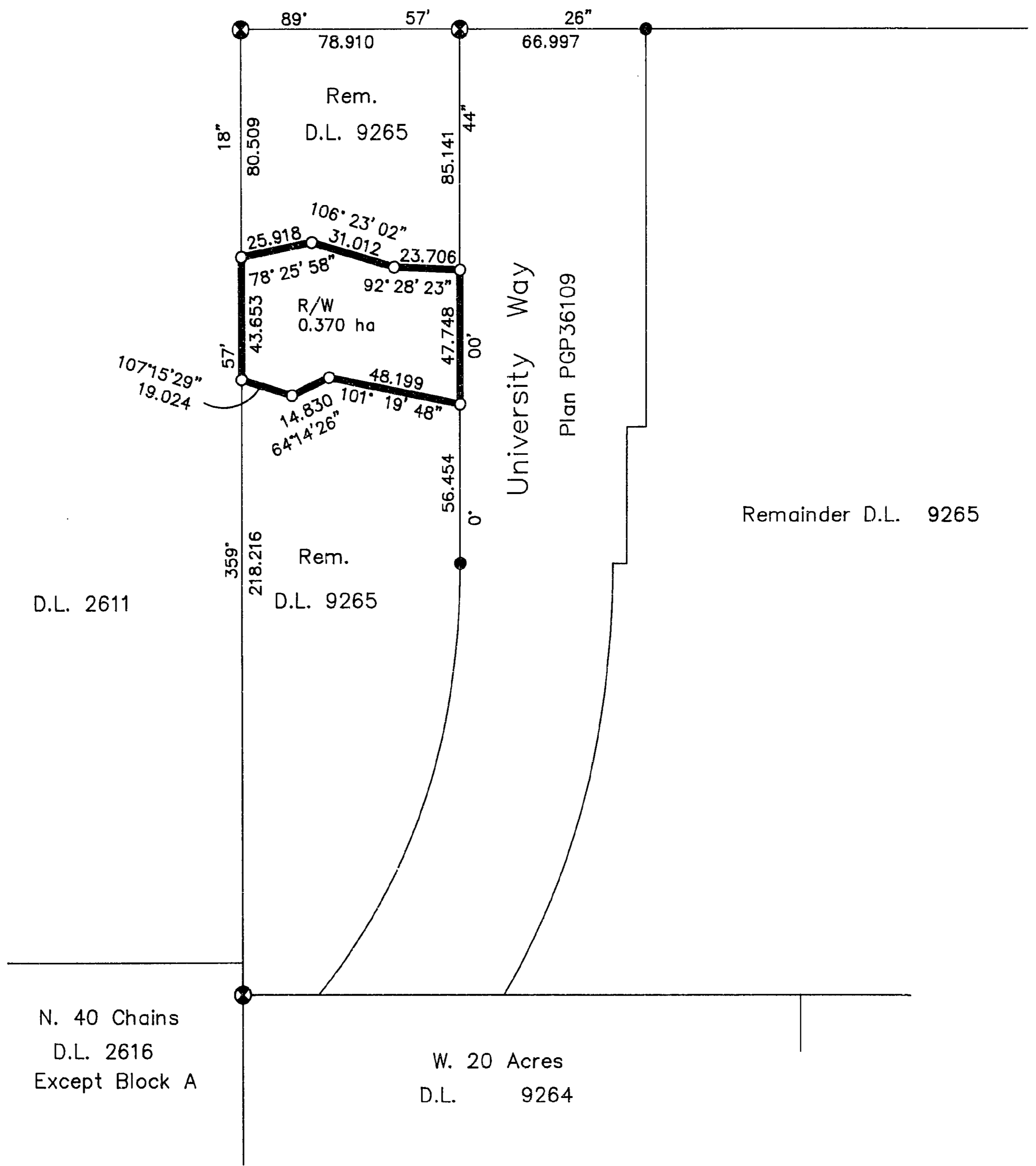


Bearings are astronomic, derived from  
Plan PGP36109, East Boundary of  
District Lot 9265 = 359°57'18".

LEGEND

- ⊗ Standard Capped Post Found
- Standard Iron Post Found
- Standard Iron Post Placed

D.L. 2611



N. 40 Chains  
D.L. 2616  
Except Block A

W. 20 Acres  
D.L. 9264

I, Gordon Kilbride, a British Columbia Land Surveyor of  
Prince George in British Columbia, certify that I was  
present at and personally superintended the survey  
represented by this plan and that the survey and plan  
are correct. The survey was completed on the 1st day  
of December, 1994.

*Gordon Kilbride*  
Gordon Kilbride, B.C.L.S.

This plan lies within the Fraser-Fort  
George Regional District.

<b>KILBRIDE LAND SURVEYING LTD.</b> British Columbia Land Surveyors Prince George, B.C. Ph: (604) 562-1196 Fax: 562-3656		
F.B.- RA	D.L.- 9265	REF. NO.- 940912RW