

26FF-226

PLAN OF STATUTORY RIGHT OF WAY THROUGH
 LOT 1, PLAN 14340
 LOT A, PLAN 13820, &
 LOT 1, PLAN PGP_ _ _ _ _
 DISTRICT LOT 1599
 CARIBOO DISTRICT

PURSUANT TO SECTION 214 OF THE LAND TITLE ACT.

B.C.G.S. 93G.086/087

PLAN No. PGP 40104

DEPOSITED IN THE LAND TITLE OFFICE
 AT PRINCE GEORGE, B.C., THIS 6
 DAY OF June, 1996

"B. Beggs"
 REGISTRAR

THIS PLAN SHOWS GROUND-LEVEL MEASURED DISTANCES.
 PRIOR TO COMPUTATION OF U.T.M. COORDINATES, MULTIPLY
 BY COMBINED FACTOR 0.99948681.

GRID BEARINGS ARE DERIVED FROM OBSERVATIONS
 BETWEEN CONTROL MONUMENTS 86H1720, AND 86H1722.
 INTEGRATED SURVEY AREA NUMBER 30, PRINCE GEORGE.

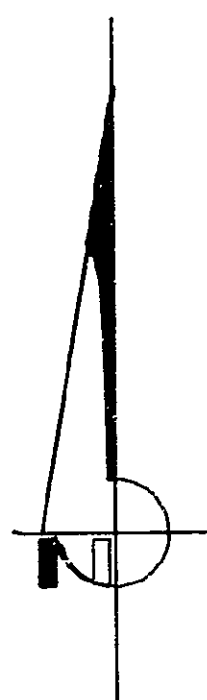
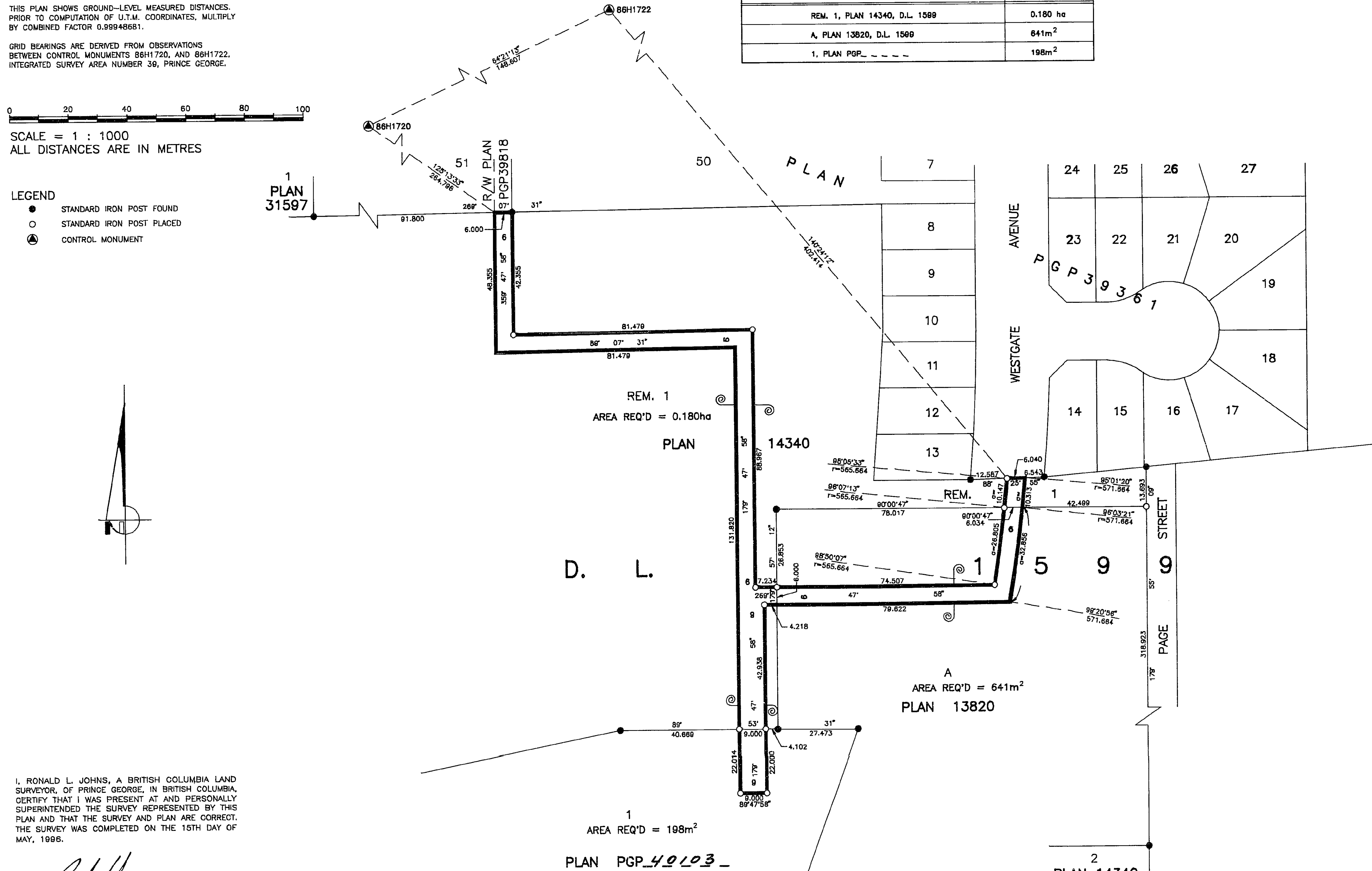


SCALE = 1 : 1000
 ALL DISTANCES ARE IN METRES

LEGEND

- STANDARD IRON POST FOUND
- STANDARD IRON POST PLACED
- ⊙ CONTROL MONUMENT

| BOOK OF REFERENCE | |
|-------------------------------|-------------------|
| DESCRIPTION | AREA REQUIRED |
| REM. 1, PLAN 14340, D.L. 1500 | 0.180 ha |
| A, PLAN 13820, D.L. 1500 | 641m ² |
| 1, PLAN PGP_ _ _ _ _ | 198m ² |



I, RONALD L. JOHNS, A BRITISH COLUMBIA LAND SURVEYOR, OF PRINCE GEORGE, IN BRITISH COLUMBIA, CERTIFY THAT I WAS PRESENT AT AND PERSONALLY SUPERINTENDED THE SURVEY REPRESENTED BY THIS PLAN AND THAT THE SURVEY AND PLAN ARE CORRECT. THE SURVEY WAS COMPLETED ON THE 15TH DAY OF MAY, 1996.

R.L. Johns

R.L. JOHNS, B.C.L.S., C.L.S.

THIS PLAN LIES WITHIN THE FRASER-FORT GEORGE REGIONAL DISTRICT.

R. L. JOHNS LAND SURVEYING LTD.
 LEGAL AND ENGINEERING SURVEYS
 240 VICTORIA STREET
 PRINCE GEORGE, B. C. V2L 2J4
 PHONE: (604)562-5759
 FAX: (604)562-5703