

26FF-226

PLAN NO. PGP39998

Deposited in the Land Title Office at Prince George this 16 day of May 1996

Brian Bigras, 1011
REGISTRAR

PK 18527

REFERENCE PLAN OF RIGHT OF WAY
WITHIN PARCEL B(P31150) OF N.E. 1/4
DISTRICT LOT 2424 AND LOT 1, PLAN
27163, DISTRICT LOT 2424,
CARIBOO DISTRICT.
PURSUANT TO SECTION 113 OF THE LAND TITLE ACT.

B.C.G.S. 93J.006

Scale: 1 : 2000 (Distances are in metres)



Grid bearings are derived from observations between control monuments 86H1643 and 86H1632, integrated survey area number 39, City of Prince George, B.C.

Note: This plan shows ground level measured distances. Prior to computation of U.T.M. co-ordinates multiply by the combined factor 0.99948100.

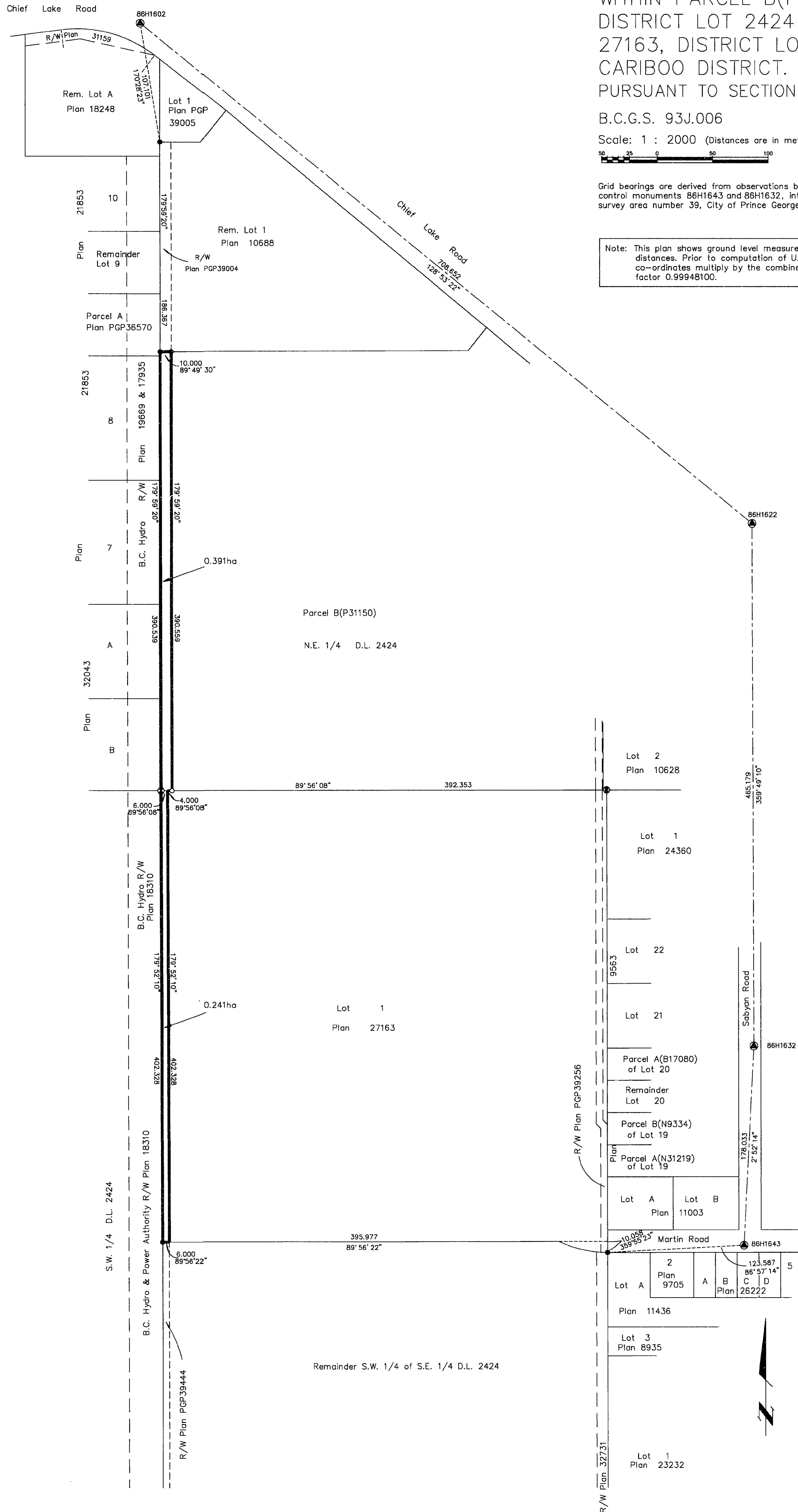
LEGEND

- Standard Capped Post Found
- Standard Iron Post Found
- Standard Iron Post Placed
- ⊙ Control Monument Found

I, Gordon Kilbride, a British Columbia Land Surveyor of Prince George in British Columbia, certify that I was present at and personally superintended the survey represented by this plan and that the survey and plan are correct. The survey was completed on the 20th day of November, 1995.

Gordon Kilbride
Gordon Kilbride, B.C.L.S.
LTO Client No. 010909

BOOK OF REFERENCE	
DESCRIPTION	AREA
Parcel B(P31150)	0.391ha
Lot 1 Plan 27163	0.241ha



This plan lies within the Fraser-Fort George Regional District.

KILBRIDE LAND SURVEYING LTD.
British Columbia Land Surveyors
Prince George, B.C.
Ph: (604) 562-1196 Fax: 562-3656

F.B.- UL24 D.L.- 2424 REF. NO.- 950758-1