

26FF-226

PLAN NO. PGP 39867

Deposited in the Land Title Office at Prince George this 22 day of MARCH 1996

"B. Biggs" mo
REGISTRAR PK10711

PLAN OF STATUTORY RIGHT-OF-WAY
OVER LOT 18, PLAN 22108,
DISTRICT LOT 482, CARIBOO DISTRICT.
PURSUANT TO 113 OF THE LAND TITLE ACT.

B.C.G.S. 93G.096

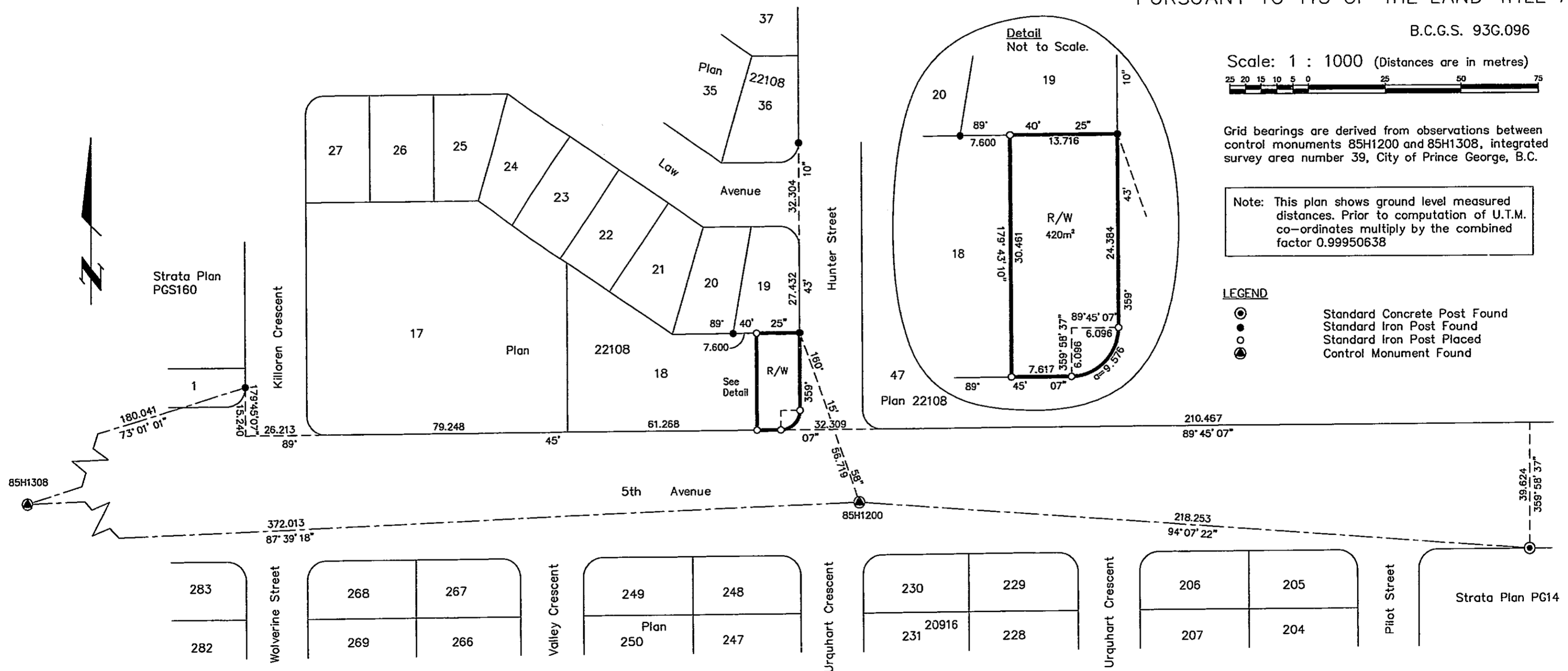
Scale: 1 : 1000 (Distances are in metres)
25 20 15 10 5 0 25 50 75

Grid bearings are derived from observations between control monuments 85H1200 and 85H1308, integrated survey area number 39, City of Prince George, B.C.

Note: This plan shows ground level measured distances. Prior to computation of U.T.M. co-ordinates multiply by the combined factor 0.99950638

LEGEND

- Standard Concrete Post Found
- Standard Iron Post Found
- Standard Iron Post Placed
- Control Monument Found



I, Gordon Kilbride, a British Columbia Land Surveyor of Prince George in British Columbia, certify that I was present at and personally supervised the survey represented by this plan and that the survey and plan are correct. The survey was completed on the 23rd day of February, 1996.

Gordon Kilbride
Gordon Kilbride, B.C.L.S.
LTO Client No. 010909

This plan lies within the Fraser-Fort George Regional District.

KILBRIDE LAND SURVEYING LTD. British Columbia Land Surveyors Prince George, B.C. Ph: (604) 562-1196 Fax: 562-3656		
F.B.- VF 70	D.L.- 482	REF. NO.-960076