

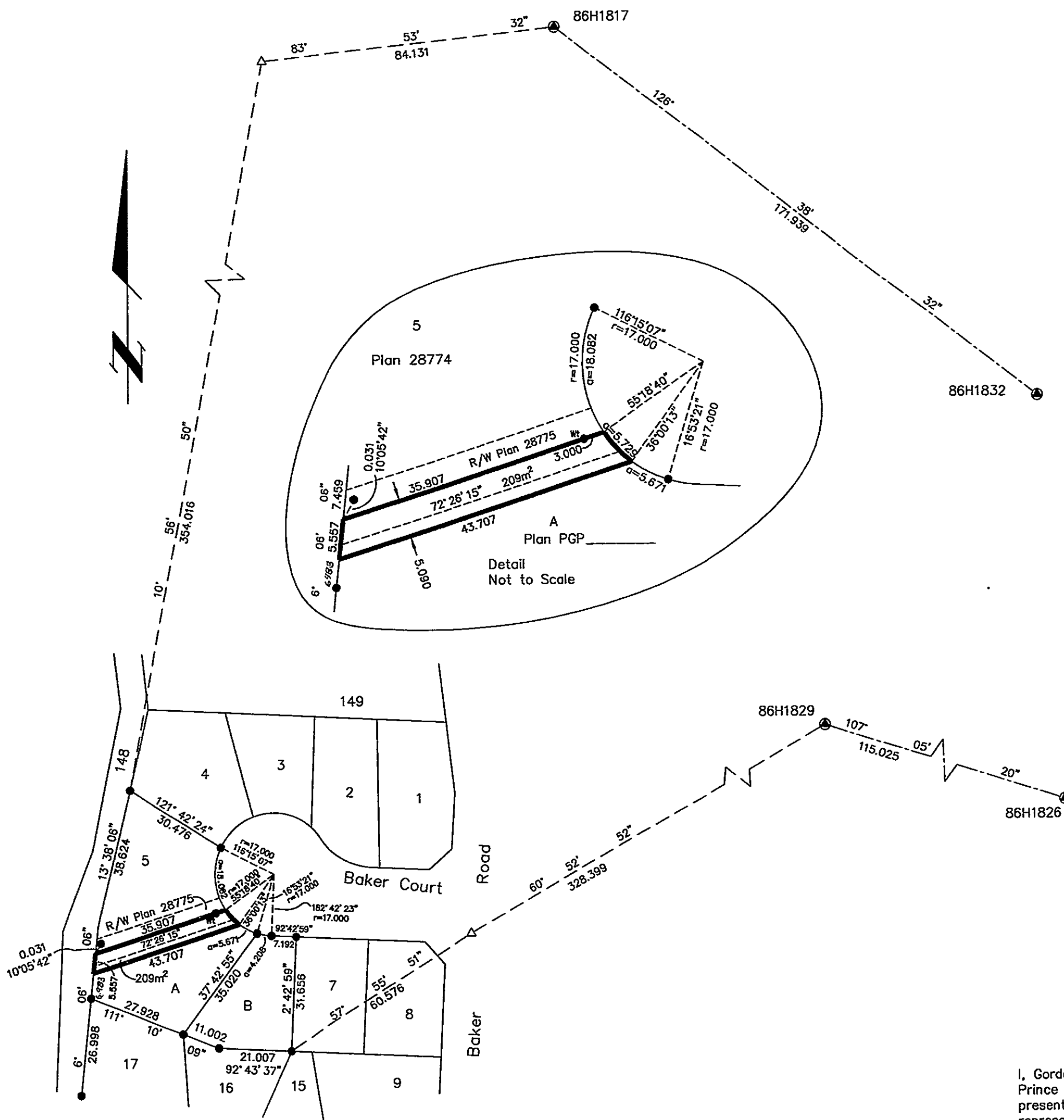
26FF-226

PLAN NO. PGP39855

Deposited in the Land Title Office at Prince George this 19 day of March 1996.

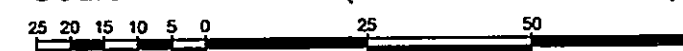
B. Bigraw Perit
REGISTRAR

023-370-289 PK10035



PLAN OF STATUTORY RIGHT-OF-WAY
OVER LOT A, PLAN PGP39854, _____,
DISTRICT LOT 2003, CARIBOO DISTRICT.
PURSUANT TO SECTION 214 OF THE LAND TITLE ACT.
B.C.G.S. 93G.087

Scale: 1 : 1000 (Distances are in metres)



LEGEND

- Standard Iron Post Found
- Standard Iron Post Placed
- ⊙ Control Monument
- △ Traverse Hub

Note: This plan shows ground level measured distances. Prior to computation of U.T.M. co-ordinates multiply by the combined factor 0.9995105393

Grid bearings are derived from observations between control monuments 86H1817 and 86H1832, integrated survey area number 39, City of Prince George, B.C.

I, Gordon Kilbride, a British Columbia Land Surveyor of Prince George in British Columbia, certify that I was present at and personally superintended the survey represented by this plan and that the survey and plan are correct. The survey was completed on the 5th day of April, 1993.

Gordon Kilbride

Gordon Kilbride, B.C.L.S.
LTO Client No. 010909

This plan lies within the Fraser-Fort George Regional District.

KILBRIDE SURVEYS		
British Columbia Land Surveyors		
Prince George, B.C.		
Ph: (604) 562-1196 Fax: 562-3656		
F.B.- TO 39	D.L.- 2003	REF. NO.-930102-5