

26-FF-226

PLAN OF STATUTORY RIGHT OF WAY THROUGH
LOT 51, PLAN PGP39361
DISTRICT LOTS 1599 & 1600
CARIBOO DISTRICT

PLAN No. PGP **39818**

DEPOSITED IN THE LAND TITLE OFFICE
AT PRINCE GEORGE, B.C., THIS 07~~th~~
DAY OF MARCH, 19 96

B.C.G.S. 93G.087

PURSUANT TO SECTION 214 OF THE LAND TITLE ACT.

SKINW A.K. BIG KAS
REGISTRAR
Yin ou



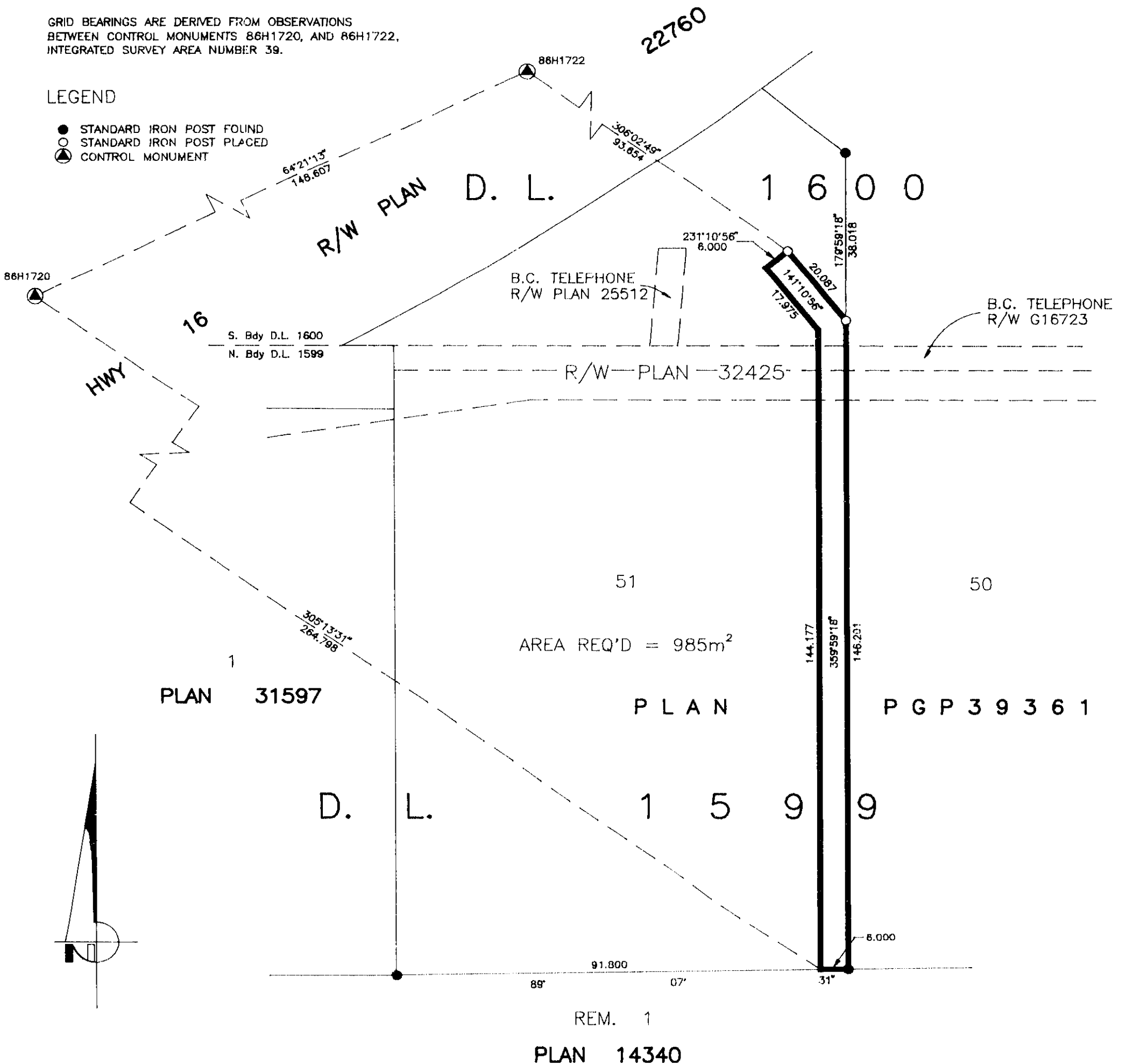
SCALE: 1 : 1000
DISTANCES ARE SHOWN IN METRES.

THIS PLAN SHOWS GROUND-LEVEL MEASURED DISTANCES.
PRIOR TO COMPUTATION OF U.T.M. COORDINATES, MULTIPLY
BY COMBINED FACTOR 0.99948681.

GRID BEARINGS ARE DERIVED FROM OBSERVATIONS
BETWEEN CONTROL MONUMENTS 86H1720, AND 86H1722,
INTEGRATED SURVEY AREA NUMBER 39.

LEGEND

- STANDARD IRON POST FOUND
- STANDARD IRON POST PLACED
- ▲ CONTROL MONUMENT



I, RONALD L. JOHNS, A BRITISH COLUMBIA LAND SURVEYOR, OF PRINCE GEORGE, IN BRITISH COLUMBIA, CERTIFY THAT I WAS PRESENT AT AND PERSONALLY SUPERINTENDED THE SURVEY REPRESENTED BY THIS PLAN AND THAT THE SURVEY AND PLAN ARE CORRECT. THE SURVEY WAS COMPLETED ON THE 3rd DAY OF OCTOBER, 1995.

THIS PLAN LIES WITHIN THE FRASER-FORT GEORGE REGIONAL DISTRICT.

R. L. JOHNS LAND SURVEYING LTD.
LEGAL AND ENGINEERING SURVEYS
240 VICTORIA STREET
PRINCE GEORGE, B. C. V2L 2J4
PHONE: (804)562-5759
FAX: (804)562-5703

R.L. Johns
R.L. JOHNS, B.C.L.S., C.L.S.