

26-FF-226

PLAN NO. PGP 39606

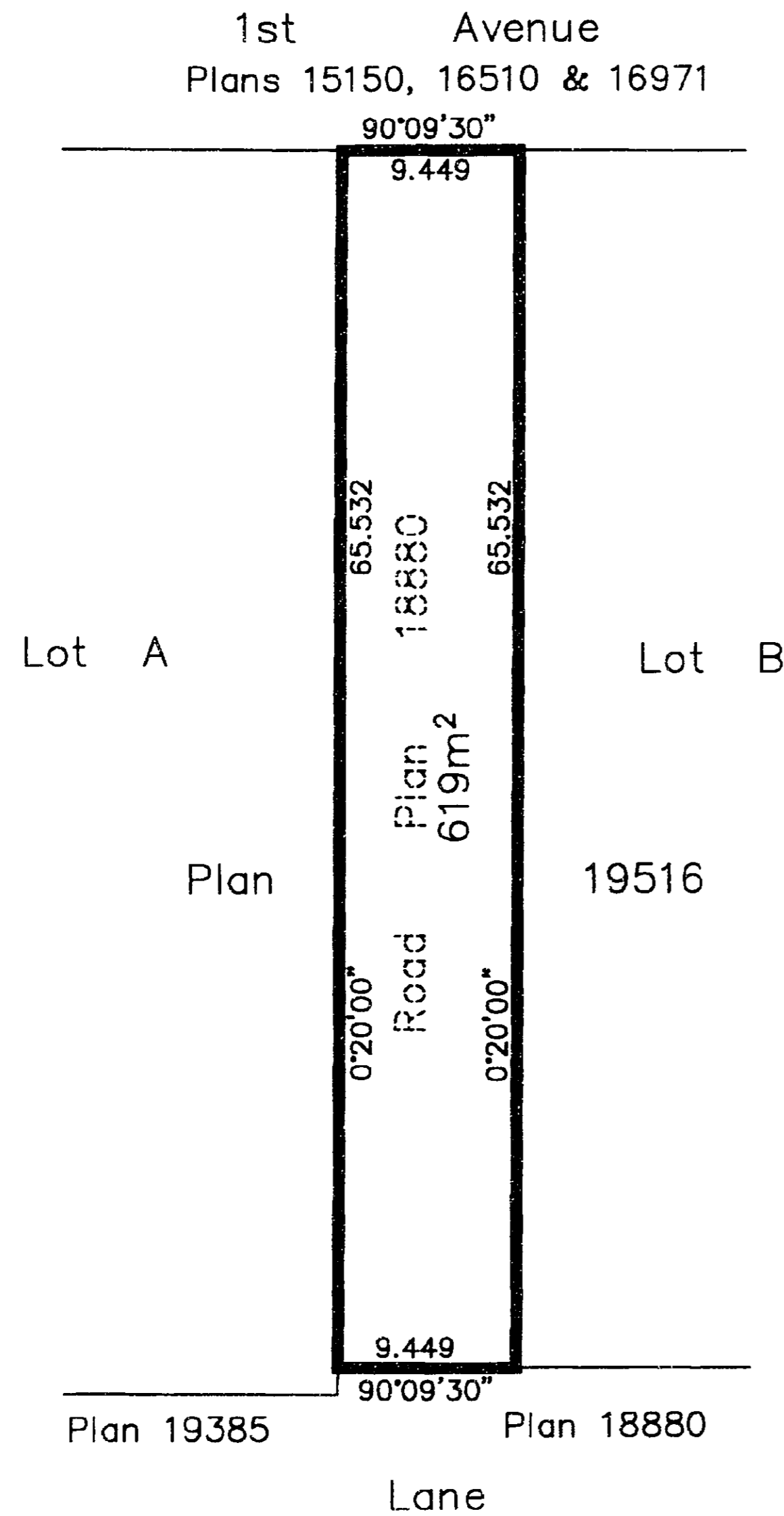
Deposited in the Land Title Office at Prince George this 29 day of Nov 1995

Brian Bigras / dg

REGISTRAR

PJ45491

Pid# 023-297-158



EXPLANATORY PLAN TO ACCOMPANY
 CITY OF PRINCE GEORGE BYLAW NO.
 CLOSING ROAD, PLAN 18880, LYING
 ADJACENT TO LOTS A & B, PLAN 19516,
 DISTRICT LOT 2610, CARIBOO DISTRICT.

PURSUANT TO SECTION 578 OF THE MUNICIPAL ACT
 B.C.G.S. 93G.096

Scale: 1 : 500 (Distances are in metres)



CERTIFIED CORRECT
 according to Land Title Office Records
 this 6th day of October, 1995.

Dale Keown

Dale Keown B.C.L.S.

This plan lies within the Fraser-Fort
 George Regional District.

KILBRIDE LAND SURVEYING LTD.

British Columbia Land Surveyors

Prince George, B.C.

Ph: (604) 562-1196 Fax: 562-3656

F.B.-

D.L.- 2610

REF. NO.-940243BL