

26-FF-226

REFERENCE PLAN TO ACCOMPANY A RESTRICTIVE COVENANT  
IN REMAINDER OF S.E. 1/4  
DISTRICT LOT 2432  
CARIBOO DISTRICT  
PURSUANT TO SECTION 215 OF THE LAND TITLE ACT.

PLAN No. PGP 39487

DEPOSITED IN THE LAND TITLE OFFICE  
AT PRINCE GEORGE, B.C., THIS 31  
DAY OF Oct 19 95

Brian Sigras/dg  
REGISTRAR  
P541114

B.C.G.S. 93J.007



SCALE = 1 : 750

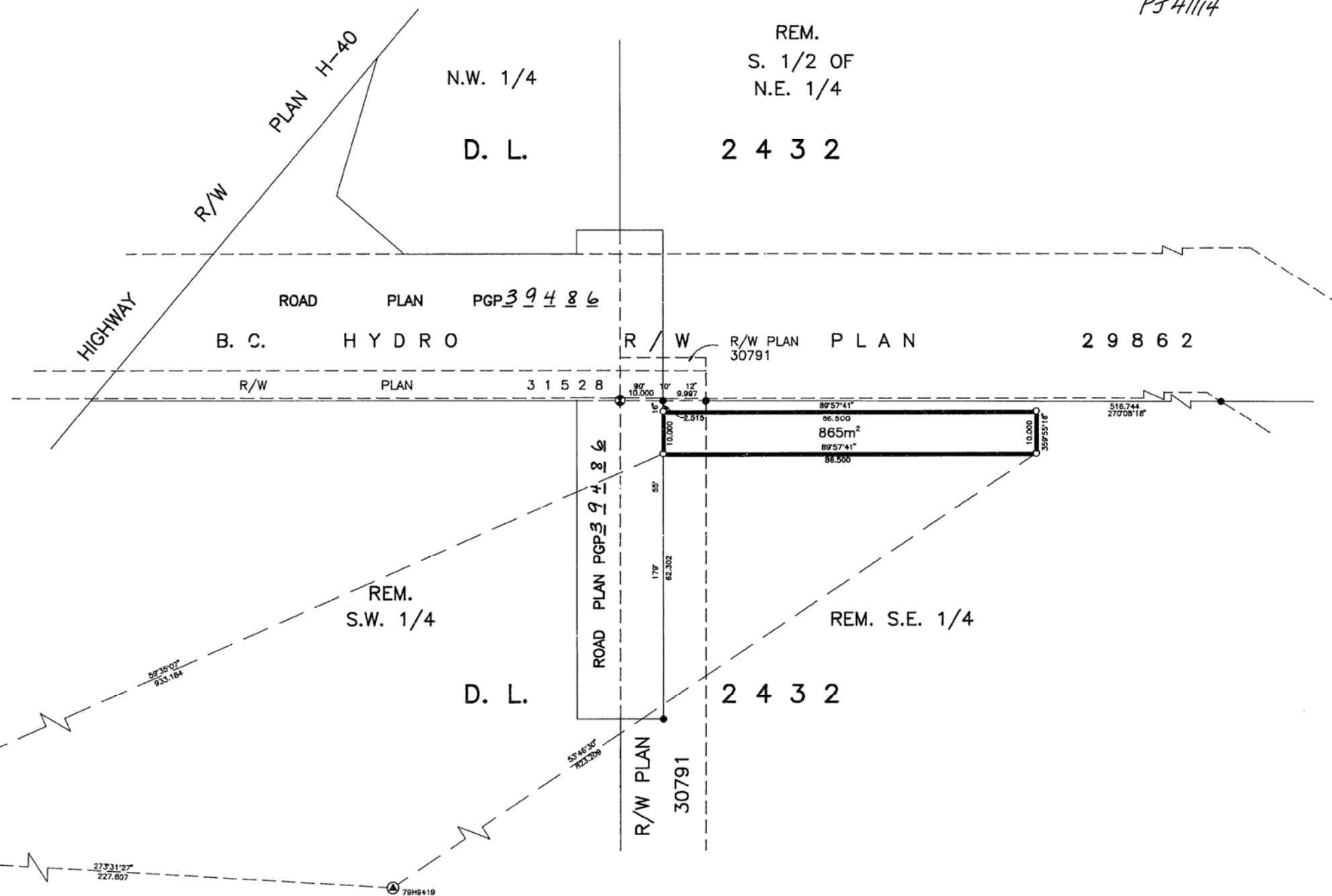
ALL DISTANCES ARE IN METRES.

THIS PLAN SHOWS GROUND-LEVEL MEASURED DISTANCES.  
PRIOR TO COMPUTATION OF U.T.M. COORDINATES, MULTIPLY  
BY COMBINED FACTOR 0.9995105393.

GRID BEARINGS ARE DERIVED FROM OBSERVATIONS  
BETWEEN CONTROL MONUMENTS 79H9419, AND 86H1804,  
INTEGRATED SURVEY AREA NUMBER 39.

LEGEND

- STANDARD IRON PIN FOUND
- STANDARD IRON PIN PLACED
- ⊙ STANDARD CAPPED POST FOUND
- ⊕ CONTROL MONUMENT



I, RONALD L. JOHNS, A BRITISH COLUMBIA LAND SURVEYOR, OF PRINCE GEORGE, IN BRITISH COLUMBIA, CERTIFY THAT I WAS PRESENT AT AND PERSONALLY SUPERINTENDED THE SURVEY REPRESENTED BY THIS PLAN AND THAT THE SURVEY AND PLAN ARE CORRECT. THE SURVEY WAS COMPLETED ON THE 11th DAY OF JULY, 1995.

R.L. Johns  
R.L. JOHNS, B.C.L.S.

THIS PLAN LIES WITHIN THE FRASER-FORT GEORGE REGIONAL DISTRICT.

R. L. JOHNS LAND SURVEYING LTD.  
LEGAL AND ENGINEERING SURVEYS  
240 VICTORIA STREET  
PRINCE GEORGE, B. C. V2L 2J4  
PHONE: (604)562-5759  
FAX: (604)562-5703