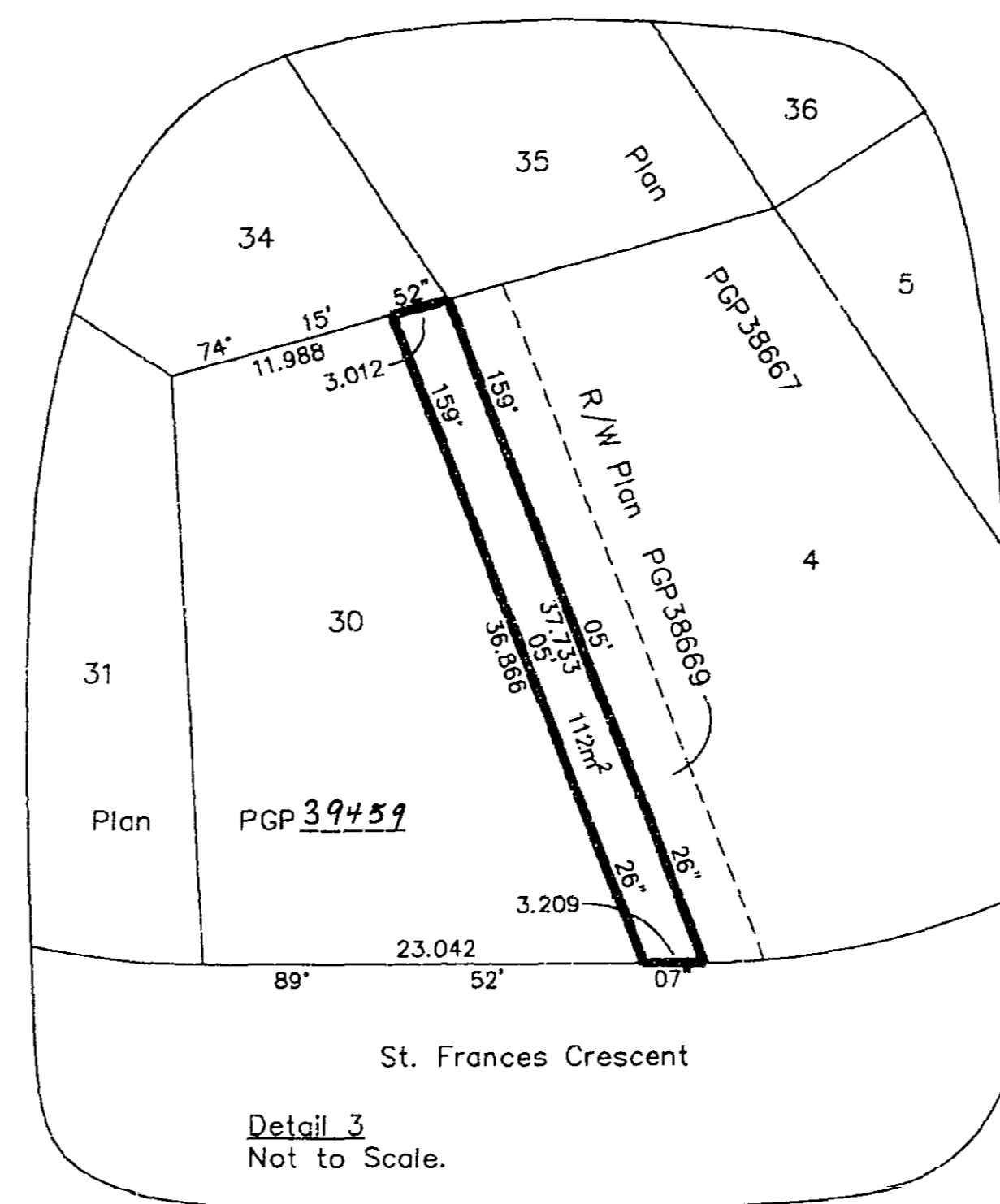
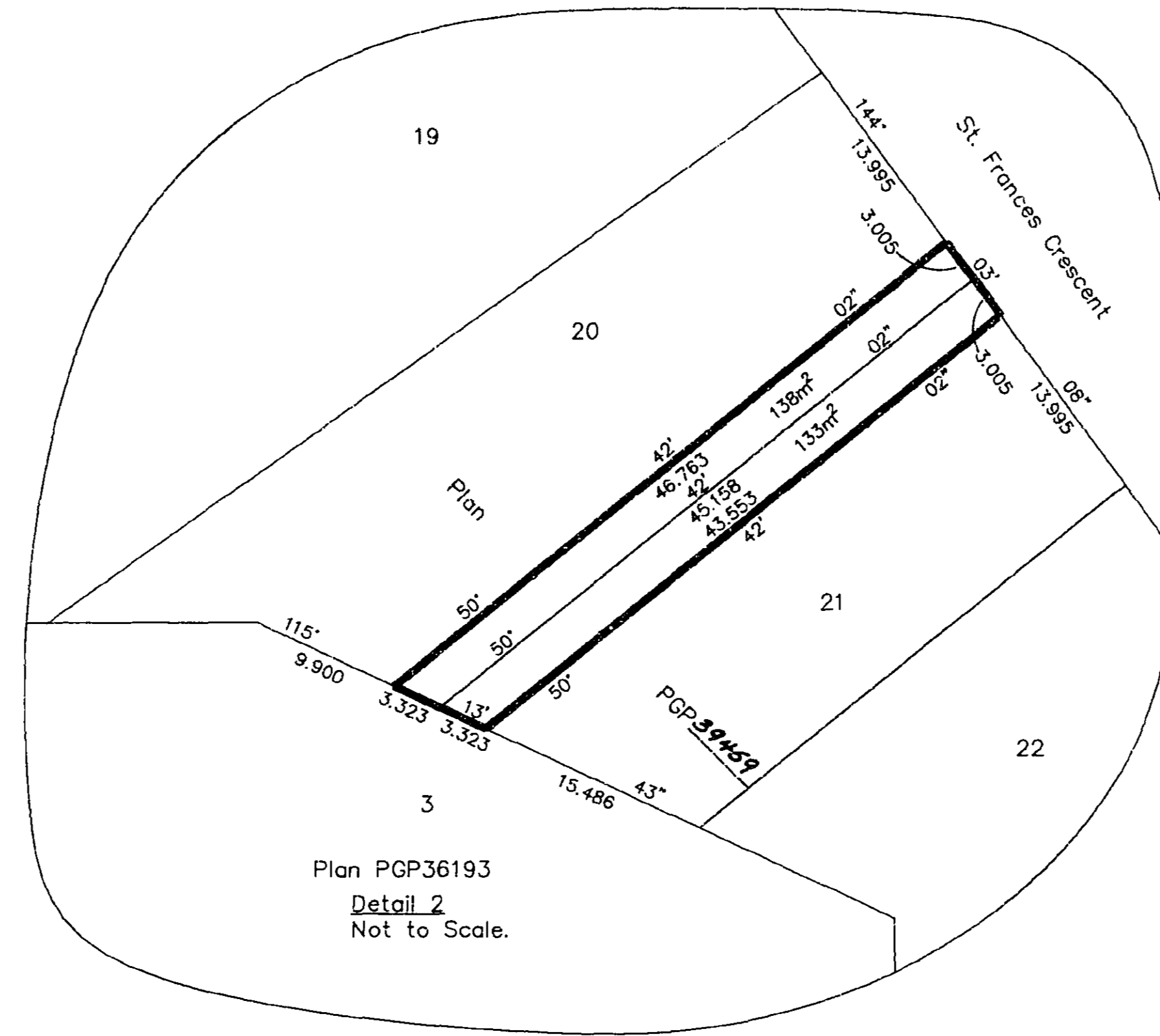
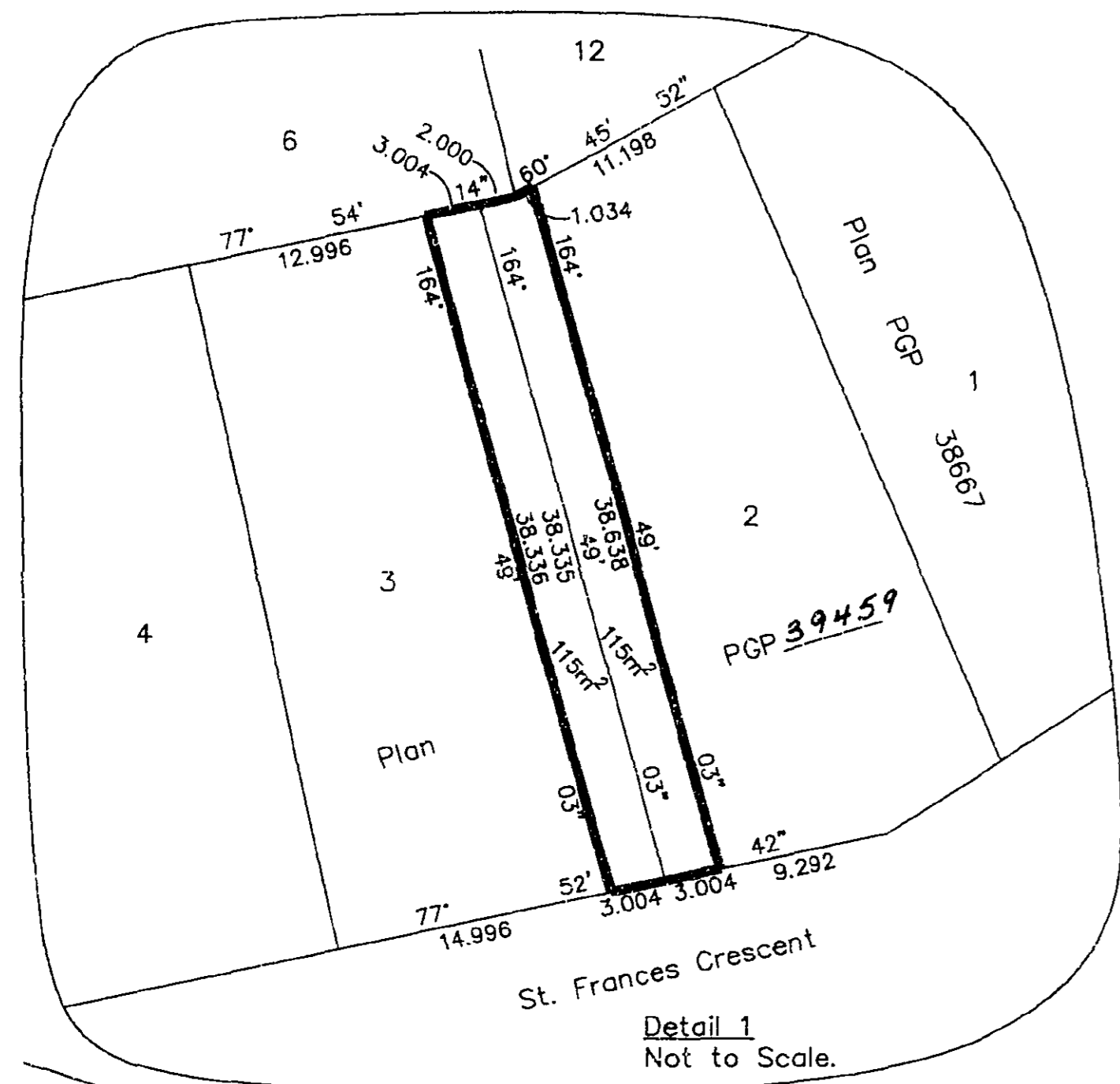


26FF-226

PLAN NO. PGP 39460

Deposited in the Land Title Office at Prince George this 20 day of Oct 1995

Brian Bigas Idg  
REGISTRAR  
PJ 39617

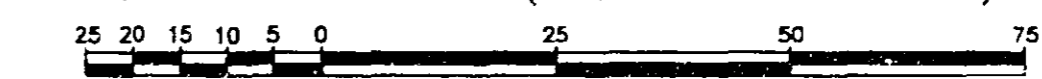


EXPLANATORY PLAN OF RIGHT OF WAYS  
OVER LOTS 2, 3, 20, 21, AND 30 ALL  
OF PLAN PGP 39459, DISTRICT LOT 2003,  
CARIBOO DISTRICT.

PURSUANT TO SECTION 99 OF THE LAND TITLE ACT.

B.C.G.S. 93G.087

Scale: 1 : 1000 (Distances are in metres)



Bearings are astronomic, derived from  
PGP 39459

Certified Correct  
According to Land  
Title Office Records  
This 26th day of September, 1995.

Gordon Kilbride  
Gordon Kilbride, B.C.L.S.  
LTO Client No. 010909

BOOK OF REFERENCE	
LOT	AREA
2	115m <sup>2</sup>
3	115m <sup>2</sup>
20	138m <sup>2</sup>
21	133m <sup>2</sup>
30	112m <sup>2</sup>

This plan lies within the Fraser-Fort George Regional District.

KILBRIDE LAND SURVEYING LTD.  
British Columbia Land Surveyors  
Prince George, B.C.  
Ph: (604) 562-1196 Fax: 562-3656  
F.B.- VA 40 D.L.- 2003 REF. NO.- 950480RW