

26FF-226

PLAN NO. PGP 39444

Deposited in the Land Title Office at Prince George this 13 day of OCTOBER 1995

"B. Bignal"
REGISTRAR PJ38546

REFERENCE PLAN OF RIGHT OF WAY WITHIN
REMAINDER OF S.W. 1/4 OF S.E. 1/4 OF
D.L. 2424, CARIBOO DISTRICT PURSUANT TO
SECTION 3 OF THE EXPROPRIATION ACT FOR
DEPOSIT UNDER SECTION 113 OF THE LAND TITLE ACT.

B.C.G.S. 93J.006

Scale: 1 : 2000 (Distances are in metres)

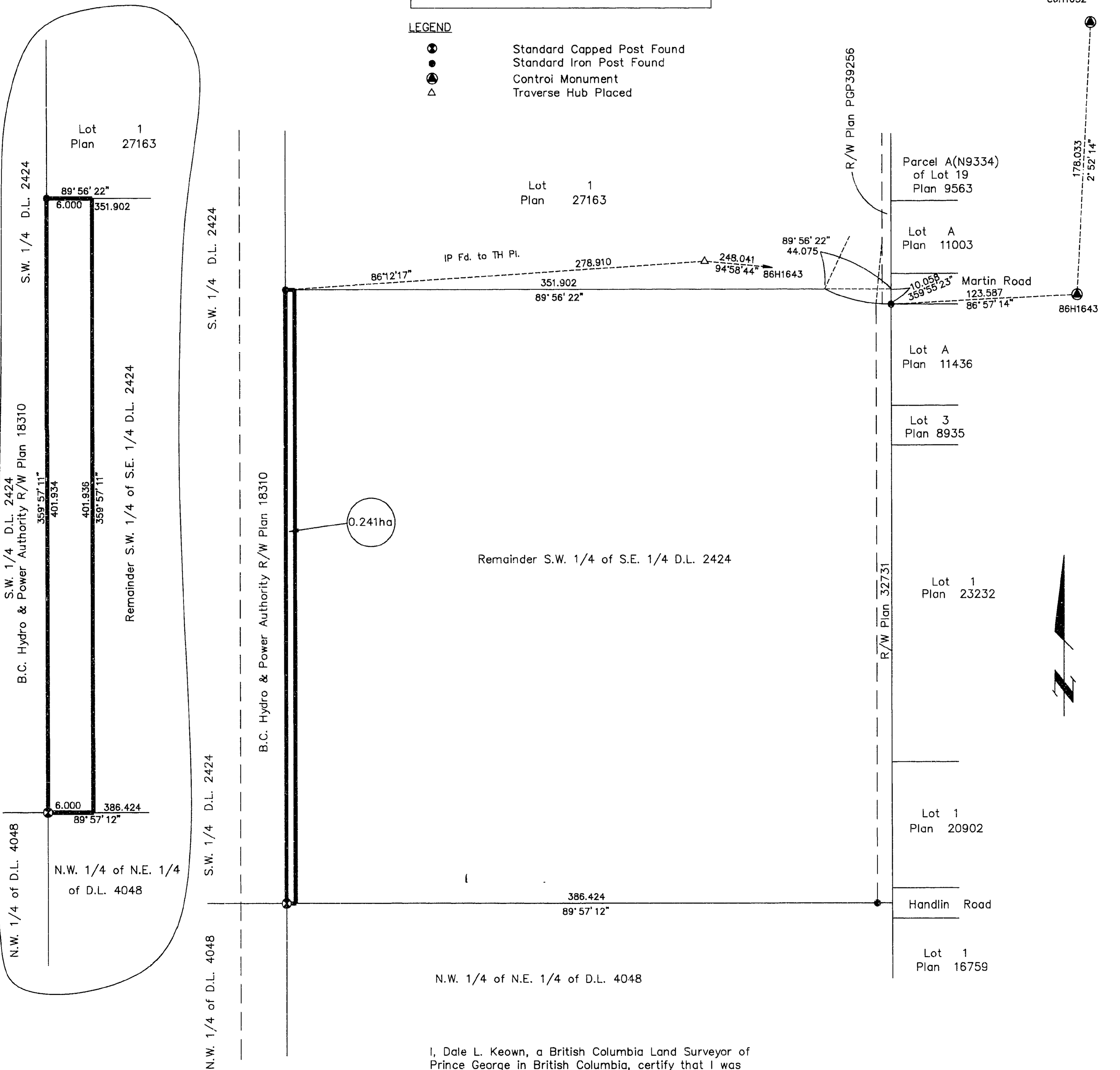


Grid bearings are derived from observations between control monuments 86H1643 and 86H1632, integrated survey area number 39, City of Prince George, B.C.

Note: This plan shows ground level measured distances. Prior to computation of U.T.M. co-ordinates multiply by the combined factor 0.99948360.

LEGEND

- ⊙ Standard Capped Post Found
- Standard Iron Post Found
- ⊙ Control Monument
- △ Traverse Hub Placed



I, Dale L. Keown, a British Columbia Land Surveyor of Prince George in British Columbia, certify that I was present at and personally superintended the survey represented by this plan and that the survey and plan are correct. The survey was completed on the 3rd day of October, 1995.

Dale Keown
Dale L. Keown, B.C.L.S.

This plan lies within the Fraser-Fort George Regional District.

KILBRIDE LAND SURVEYING LTD.
British Columbia Land Surveyors
Prince George, B.C.
Ph: (604) 562-1196 Fax: 562-3656

F.B.- UL24 D.L.- 2424 REF. NO.- 950758RW