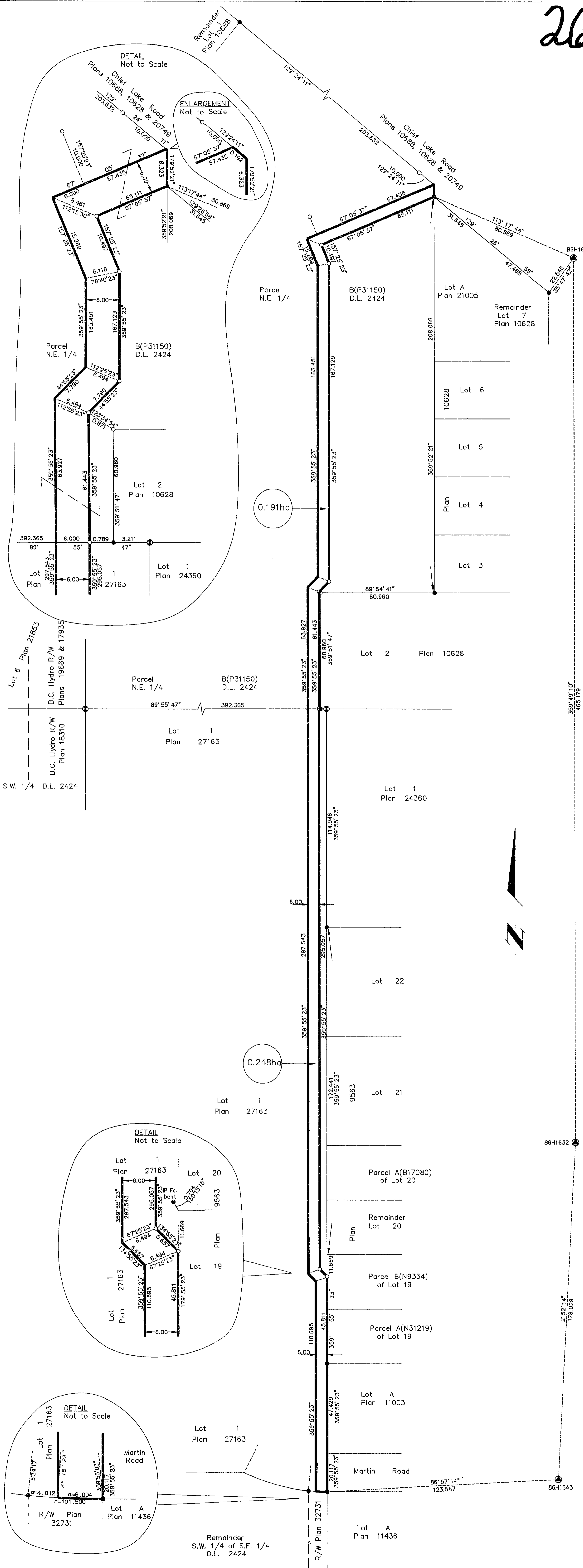


26FF-226

PLAN NO. PGP 39256

Deposited in the Land Title Office at Prince George this 23 day of August 1995

"B. Bigelow" fmk
REGISTRAR P530674



REFERENCE PLAN OF RIGHT OF WAY
WITHIN LOT 1, PLAN 27163 AND
PARCEL B(P31150), OF THE N.E. 1/4,
DISTRICT LOT 2424, CARIBOO DISTRICT.
B.C.G.S. 93J.006

Scale: 1 : 1000 (Distances are in metres)

Grid bearings are derived from observations between control monuments 86H1643 and 86H1632, integrated survey area number 39, City of Prince George, B.C.

Note: This plan shows ground level measured distances. Prior to computation of U.T.M. co-ordinates multiply by the combined factor 0.99948360

- LEGEND
- Standard Capped Post Found
 - Standard Iron Post Found
 - Standard Iron Post Placed
 - ⊙ Control Monument

BOOK OF REFERENCE	
DESCRIPTION	AREA
Lot 1, Plan 27163	0.248ha.
Parcel B, N.E. 1/4 D.L. 2424	0.191ha

I, Dale L. Keown, a British Columbia Land Surveyor of Prince George in British Columbia, certify that I was present at and personally superintended the survey represented by this plan and that the survey and plan are correct. The survey was completed on the 7th day of July, 1995.

Dale Keown
Dale L. Keown, B.C.L.S.

This plan lies within the Fraser-Fort George Regional District.

KILBRIDE LAND SURVEYING LTD.
British Columbia Land Surveyors
Prince George, B.C.
Ph: (604) 562-1196 Fax: 562-3656

F.B.- RA	D.L.- 2424	REF. NO.- 950443
----------	------------	------------------