

26-FF-226

PLAN OF STATUTORY RIGHT OF WAY THROUGH
REMAINDER OF LOT 1, PLAN 17575
DISTRICT LOT 2508
CARIBOO DISTRICT

B.C.G.S. 93G.096 & 93G.097



SCALE = 1 : 1000
DISTANCES ARE SHOWN IN METRES

THIS PLAN SHOWS GROUND-LEVEL MEASURED DISTANCES.
PRIOR TO COMPUTATION OF U.T.M. COORDINATES, MULTIPLY
BY COMBINED FACTOR 0.99950757.

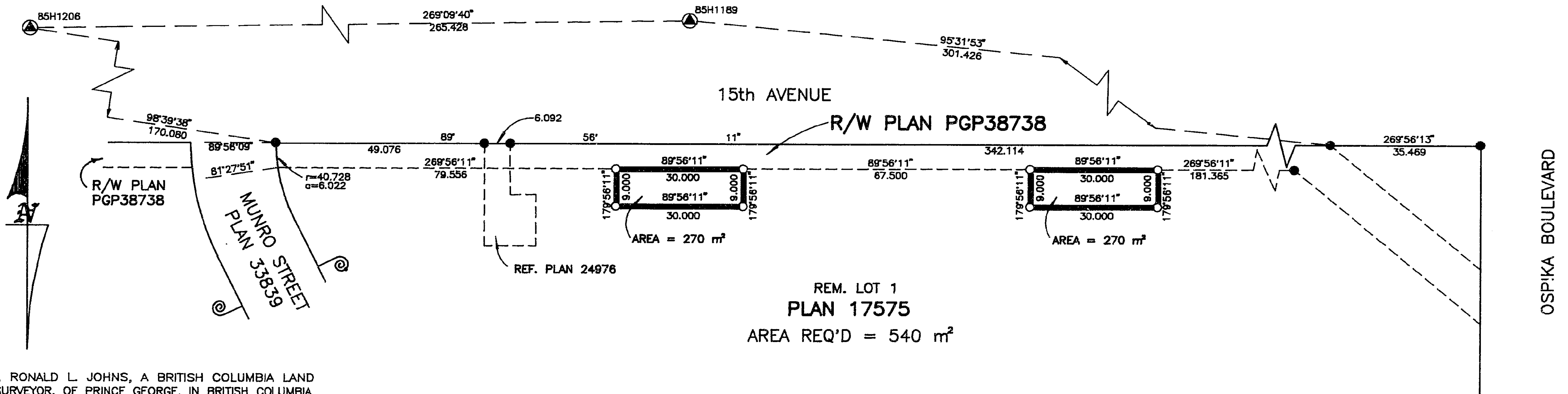
GRID BEARINGS ARE DERIVED FROM OBSERVATIONS
BETWEEN CONTROL MONUMENTS 85H1189 AND 85H1206,
INTEGRATED SURVEY AREA NUMBER 39.

- LEGEND
- STANDARD IRON POST FOUND
 - STANDARD IRON POST PLACED
 - ▲ CONTROL MONUMENT

PLAN No. PGP 39255

DEPOSITED IN THE LAND TITLE OFFICE
AT PRINCE GEORGE, B.C., THIS 23
DAY OF AUGUST, 1995.

REGISTRAR *B. Biggs*
mc



I, RONALD L. JOHNS, A BRITISH COLUMBIA LAND SURVEYOR, OF PRINCE GEORGE, IN BRITISH COLUMBIA, CERTIFY THAT I WAS PRESENT AT AND PERSONALLY SUPERINTENDED THE SURVEY REPRESENTED BY THIS PLAN AND THAT THE SURVEY AND PLAN ARE CORRECT. THE SURVEY WAS COMPLETED ON THE 14th DAY OF MARCH, 1995.

D. L. 2 5 0 8

THIS PLAN LIES WITHIN THE FRASER-FORT GEORGE REGIONAL DISTRICT.

R.L. Johns
R.L. JOHNS, B.C.L.S.

R. L. JOHNS LAND SURVEYING LTD.
LEGAL AND ENGINEERING SURVEYS
240 VICTORIA STREET
PRINCE GEORGE, B. C. V2L 2J4
PHONE: (604)562-5759
FAX: (604)562-5703

95-27-R R9-30