

EXPLANATORY PLAN OF STATUTORY RIGHT OF WAY THROUGH PARTS OF DISTRICT LOT 2508 CARIBOO DISTRICT

B.C.G.S. 93G.096

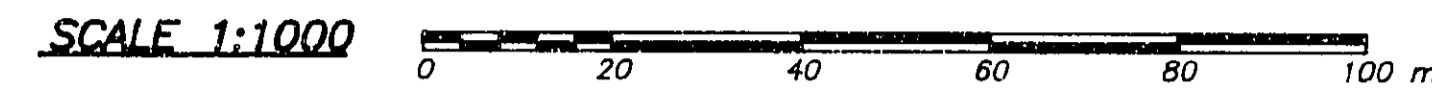
26FF-226

PLAN PGP 39254

DEPOSITED IN THE LAND TITLE OFFICE AT PRINCE GEORGE B.C.
THIS 23 DAY OF August 1995

B. Pigeon
REGISTRAR

DEPOSITED PURSUANT TO SECTION 99(1)(a) OF THE LAND TITLE ACT



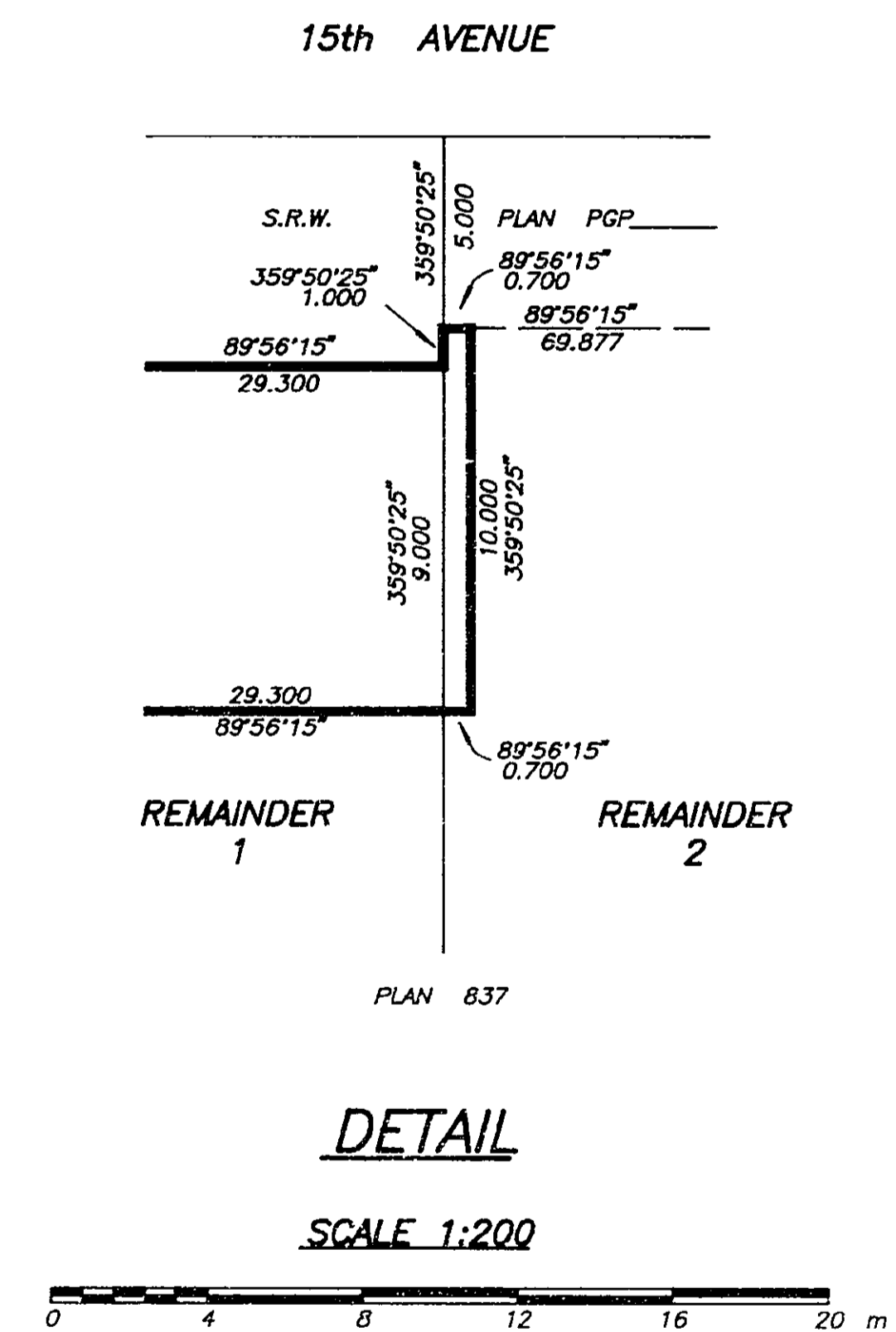
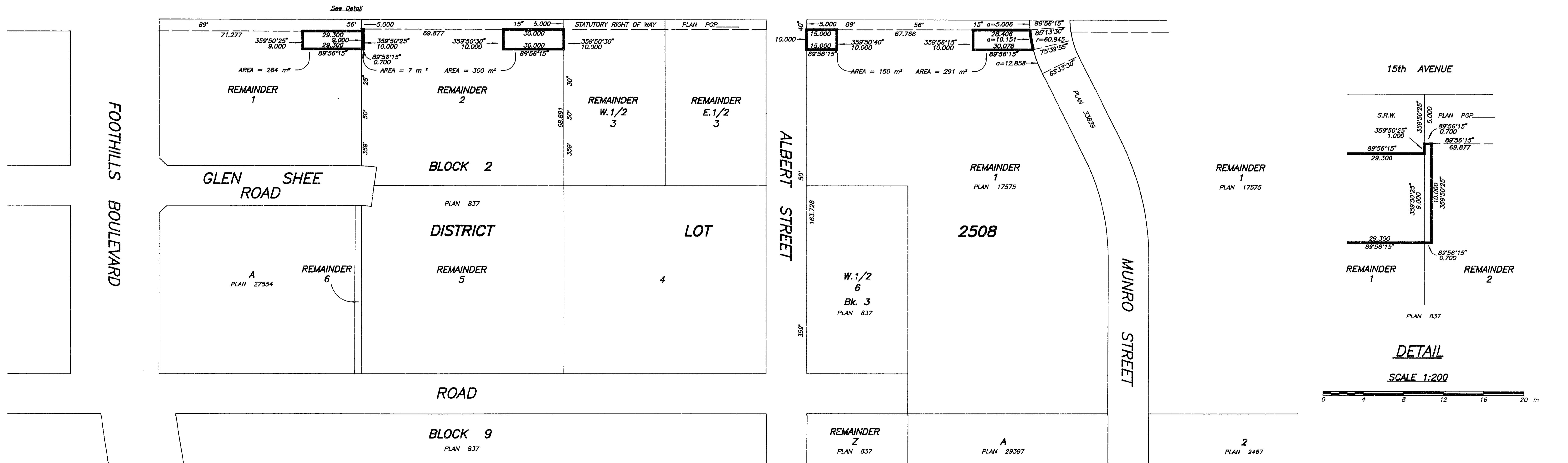
ALL DISTANCES ARE IN METRES AND DECIMALS THEREOF UNLESS NOTED OTHERWISE.

GRID BEARINGS ARE DERIVED FROM PLAN PGP
INTEGRATED SURVEY AREA #39 - PRINCE GEORGE

THIS PLAN SHOWS GROUND LEVEL MEASURED DISTANCES. PRIOR TO COMPUTATION OF UTM COORDINATES, MULTIPLY BY COMBINED FACTOR 0.99950750

BOOK OF REFERENCE	
DESCRIPTION	AREA
LOT 1, BLOCK 2, DISTRICT LOT 2508 CARIBOO DISTRICT PLAN 837, EXCEPT PLANS 17638 & 27554	264 m ²
LOT 2, BLOCK 2, DISTRICT LOT 2508 CARIBOO DISTRICT PLAN 837, EXCEPT PLANS 17638 & 27554	307 m ²
LOT 1, DISTRICT LOT 2508 CARIBOO DISTRICT PLAN 17575, EXCEPT PLAN 33839	441 m ²

15th AVENUE



CERTIFIED CORRECT ACCORDING TO LAND TITLE OFFICE RECORDS
THIS 25 DAY OF July 1995

B. Pigeon

B.C.L.S.