

26-FF-226

PLAN NO. PGP 39184

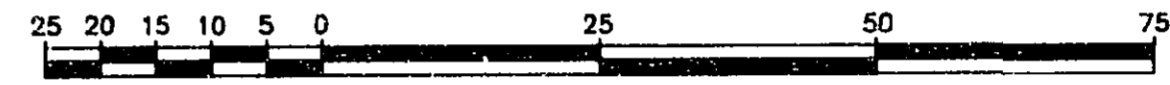
Deposited in the Land Title Office at Prince George this 2 day of Aug 1995.

REGISTRAR *B. A. R. Bigas*

B.C. HYDRO AND POWER AUTHORITY
 REFERENCE PLAN OF STATUTORY
 RIGHT OF WAY IN REMAINDER OF
 LOT 1, PLAN 24779,
 DISTRICT LOT 753 AND 2003,
 CARIBOO DISTRICT.

B.C.G.S. 93G.097

Scale: 1 : 1000 (Distances are in metres)

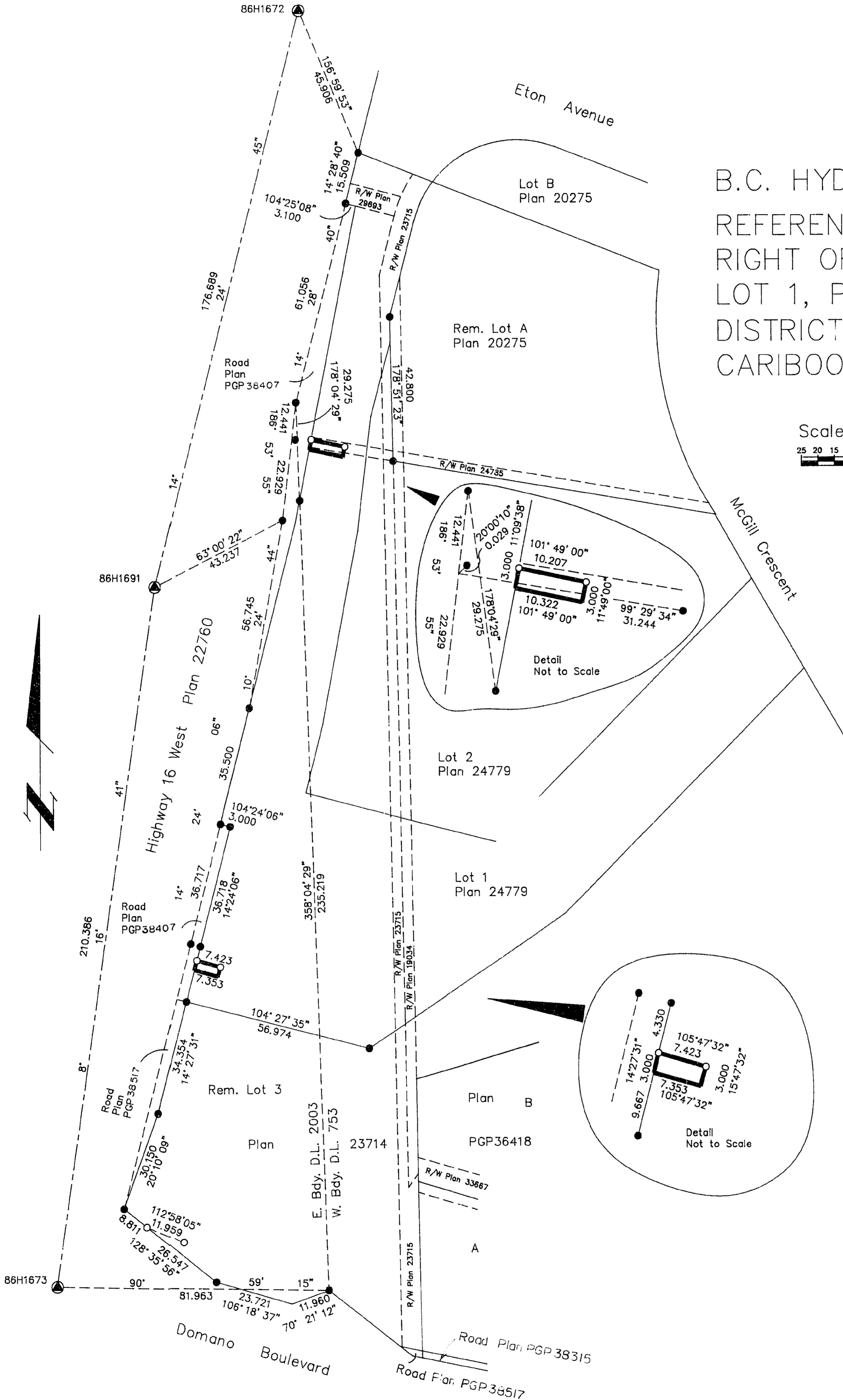


Note: This plan shows ground level measured distances. Prior to computation of U.T.M. co-ordinates multiply by the combined factor 0.999500645

Grid bearings are derived from observations between control monuments 86H1673 and 86H1691, integrated survey area number 39, City of Prince George, B.C.

LEGEND

- Standard Iron Post Found
- Standard Iron Post Placed
- ⊙ Control Monument



I, Gordon Kilbride, a British Columbia Land Surveyor of Prince George in British Columbia, certify that I was present at and personally superintended the survey represented by this plan and that the survey and plan are correct. The survey was completed on the 11 day of July, 1994.

BOOK OF REFERENCE	
DESCRIPTION	AREA
Lot 1, Plan 24779	53 m ²

Gordon Kilbride
 Gordon Kilbride, B.C.L.S.

This plan lies within the Fraser-Fort George Regional District.

KILBRIDE LAND SURVEYING LTD.
 British Columbia Land Surveyors
 Prince George, B.C.
 Ph: (604) 562-1196 Fax: 562-3656

F.B.- RA D.L.- 753 REF. NO.- 940443-8