

26-FF-226

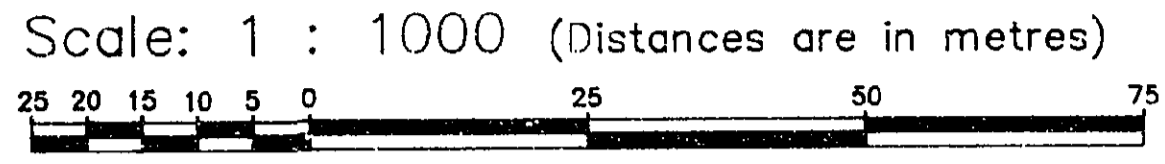
PLAN OF SUBDIVISION OF PART OF LOT A, PLAN 14843, DISTRICT LOT 954, CARIBOO DISTRICT.

B.C.G.S.93G.097

PLAN NO. PGP 39104

Deposited in the Land Title Office at Prince George this 13 day of July 1995

"B.A.R. Biggs" inc
REGISTRAR

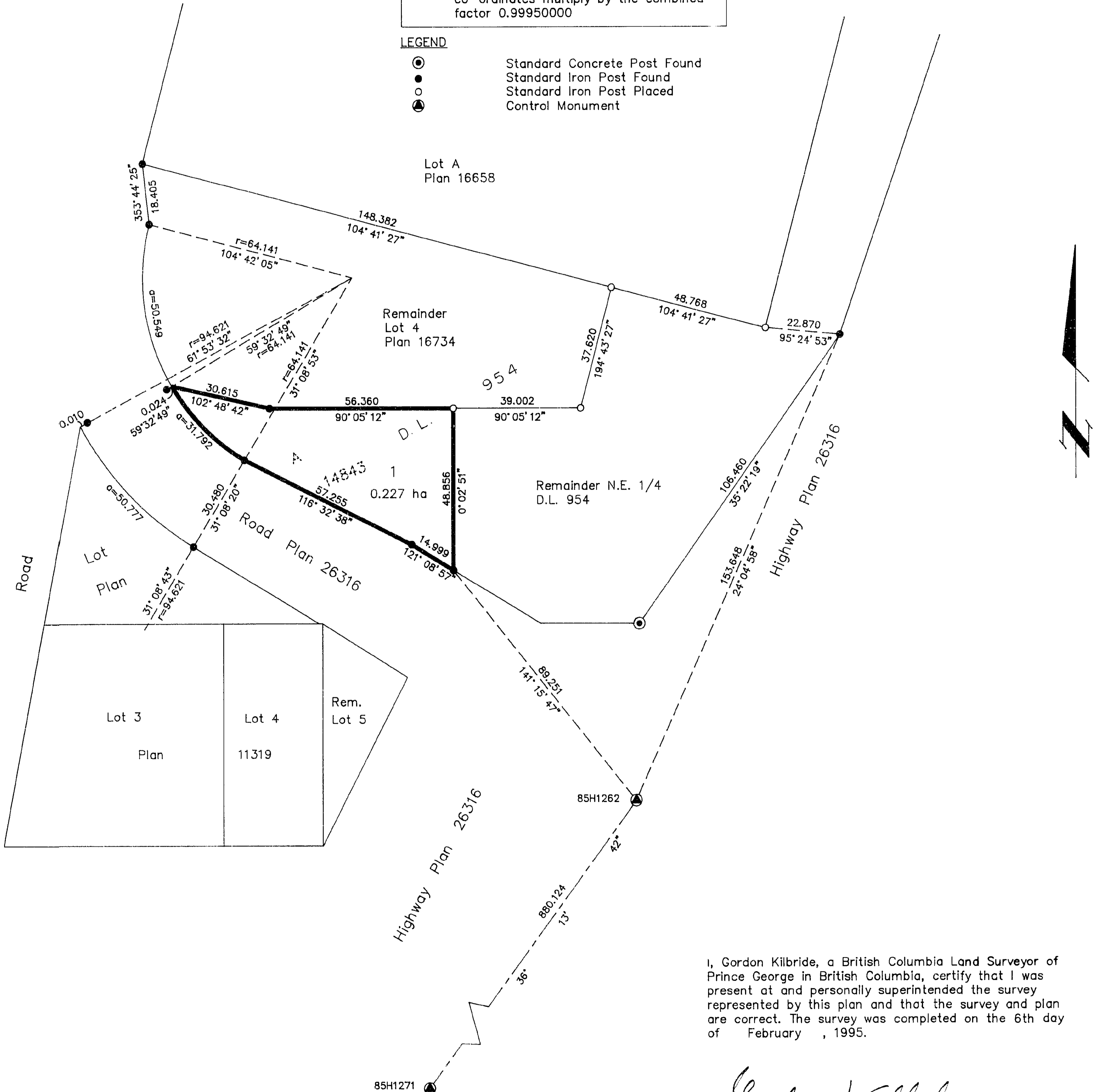


Grid bearings are derived from observations between control monuments 85H1262 and 85H1271, integrated survey area number 39, City of Prince George, B.C.

Note: This plan shows ground level measured distances. Prior to computation of U.T.M. co-ordinates multiply by the combined factor 0.99950000

LEGEND

- ⊙ Standard Concrete Post Found
- Standard Iron Post Found
- Standard Iron Post Placed
- ⊙ Control Monument



I, Gordon Kilbride, a British Columbia Land Surveyor of Prince George in British Columbia, certify that I was present at and personally superintended the survey represented by this plan and that the survey and plan are correct. The survey was completed on the 6th day of February, 1995.

Gordon Kilbride
Gordon Kilbride, B.C.L.S.

This plan lies within the Fraser-Fort George Regional District.

KILBRIDE LAND SURVEYING LTD.
British Columbia Land Surveyors
Prince George, B.C.
Ph: (604) 562-1196 Fax: 562-3656

F.B.- VE 12 | D.L.- 954 | REF. NO.- 940645

I hereby certify that this is the Official Plan of the lands shown outlined herein.

S. P. ...
Surveyor General
Victoria, B.C. July 5 1995