

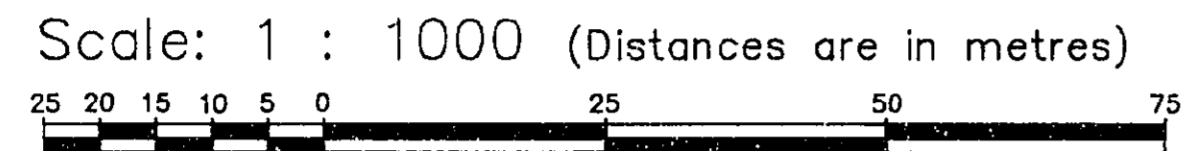
B C TEL
PLAN OF STATUTORY RIGHT OF WAY
WITHIN LOT 1, PLAN 21221, DISTRICT
LOT 2423, CARIBOO DISTRICT.
PURSUANT TO SECTION 113 OF THE LAND TITLE ACT.
B.C.G.S. 93J.006

26-FF-226

PLAN NO. PGP 39086

Deposited in the Land Title Office at Prince
George this 10 day of July 1995

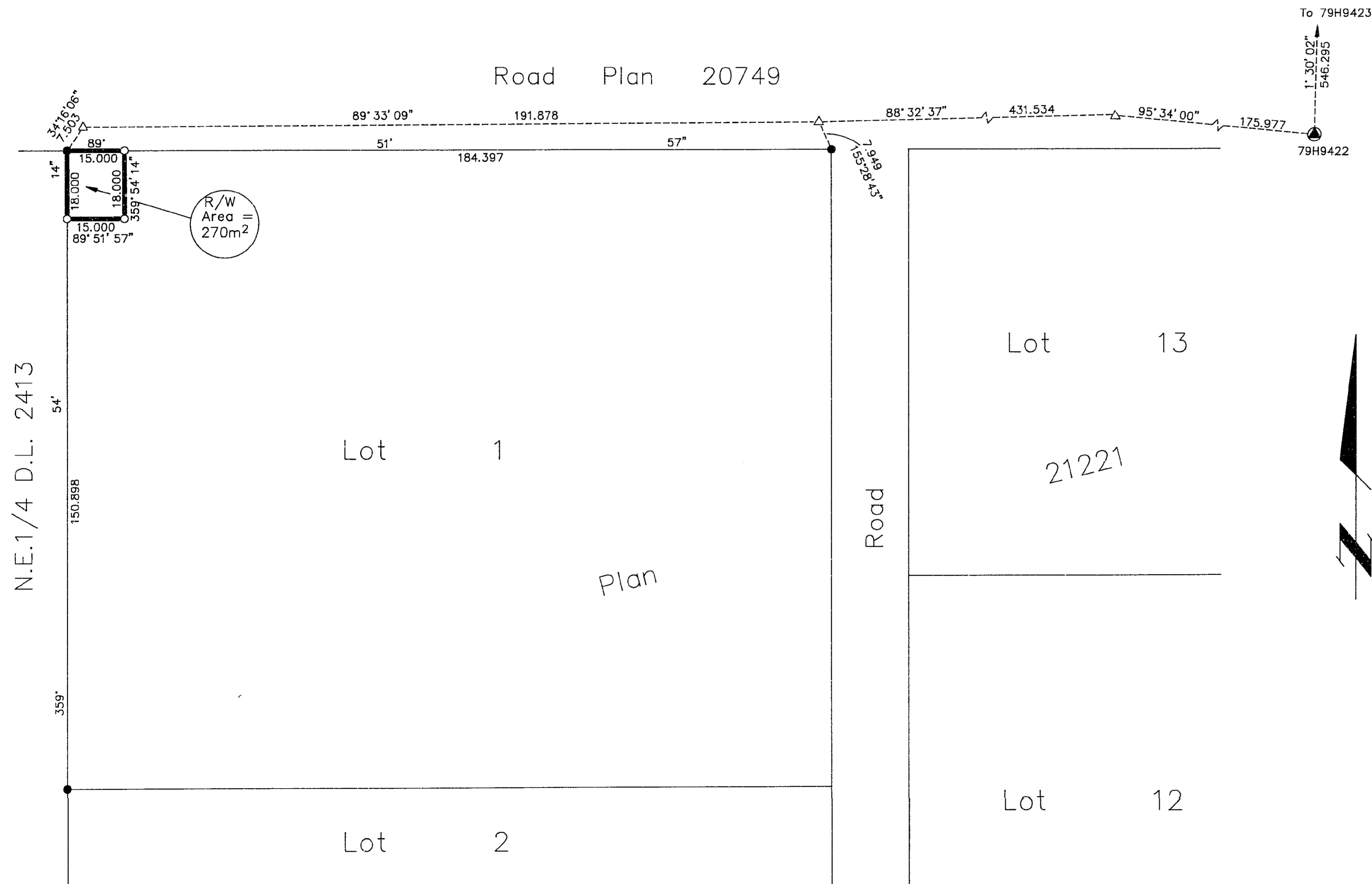
Brian Bigras/dg
REGISTRAR
PJ23877.



Note: This plan shows ground level measured
distances. Prior to computation of U.T.M.
co-ordinates multiply by the combined
factor 0.99948111

- LEGEND
- Standard Iron Post Found
 - Standard Iron Post Placed
 - ⊙ Control Monument
 - △ Traverse Hub Placed

Grid bearings are derived from observations between
control monuments 79H9422 and 79H9423, integrated
survey area number 39, City of Prince George, B.C.



I, Dale L. Keown, a British Columbia Land Surveyor of
Prince George in British Columbia, certify that I was
present at and personally superintended the survey
represented by this plan and that the survey and plan
are correct. The survey was completed on the 29th day
of May, 1995.

Dale Keown
Dale L. Keown, B.C.L.S.

This plan lies within the Fraser-Fort
George Regional District.

KILBRIDE LAND SURVEYING LTD. British Columbia Land Surveyors Prince George, B.C. Ph: (604) 562-1196 Fax: 562-3656		
F.B.- UP47	D.L.- 2423	REF. NO.- 950200