

26 FF-226

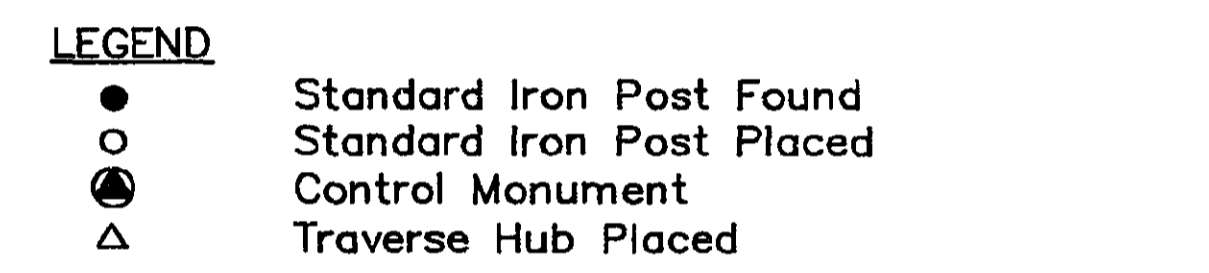
PLAN NO. PGP 39004

Deposited in the Land Title Office at Prince George this 14 day of June 1995

Brian Bigas/dg
REGISTRAR
P519618

PLAN OF STATUTORY RIGHT OF WAY WITHIN REMAINDER OF LOT 1, PLAN 10688, DISTRICT LOT 2424, CARIBOO DISTRICT. PURSUANT TO SECTION 113 OF THE LAND TITLE ACT. B.C.G.S. 93J.006

Scale: 1 : 1000 (Distances are in metres)

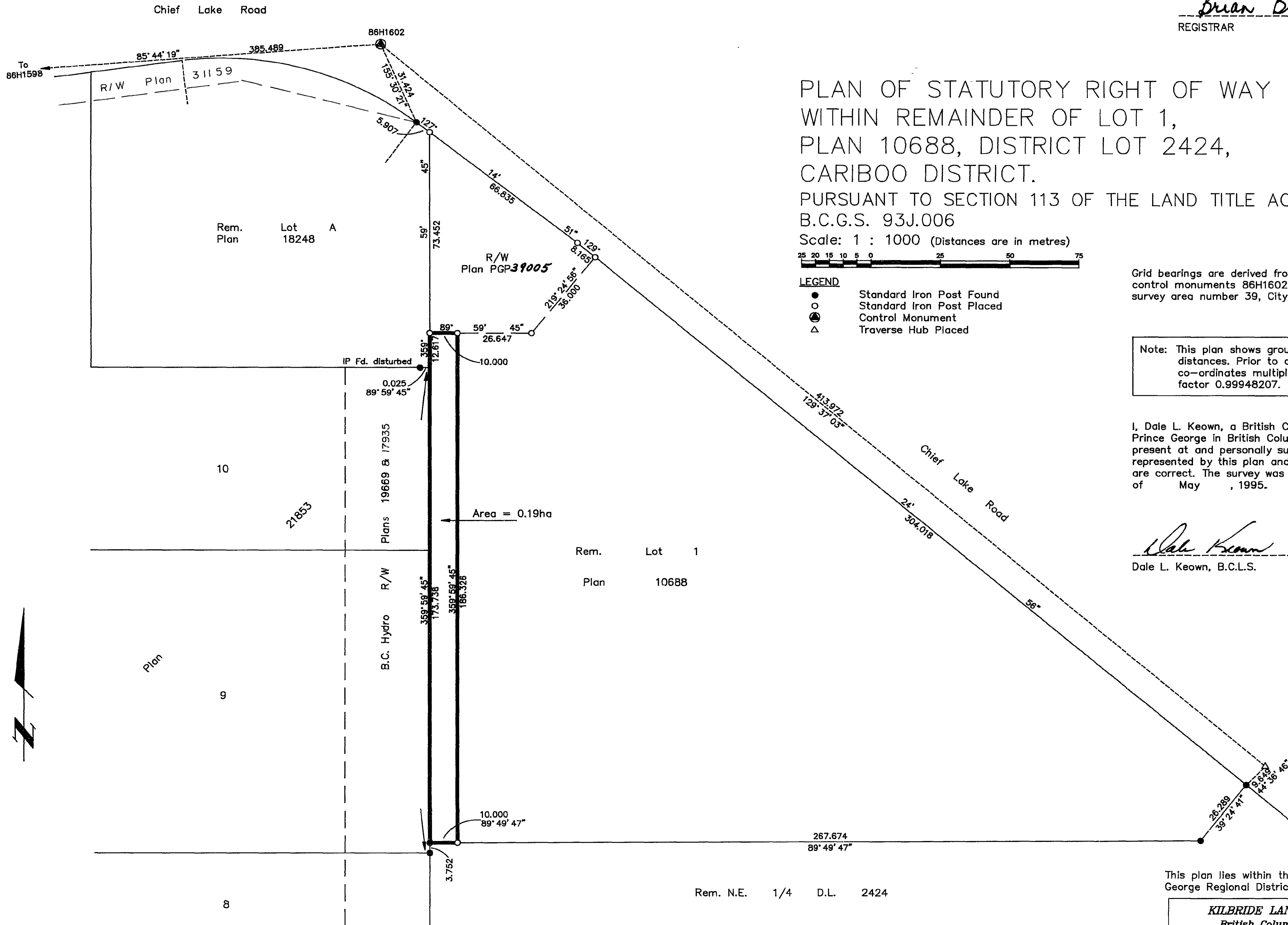


Grid bearings are derived from observations between control monuments 86H1602 and 86H1598, integrated survey area number 39, City of Prince George, B.C.

Note: This plan shows ground level measured distances. Prior to computation of U.T.M. co-ordinates multiply by the combined factor 0.99948207.

I, Dale L. Keown, a British Columbia Land Surveyor of Prince George in British Columbia, certify that I was present at and personally supervised the survey represented by this plan and that the survey and plan are correct. The survey was completed on the 25th day of May, 1995.

Dale Keown
Dale L. Keown, B.C.L.S.



This plan lies within the Fraser-Fort George Regional District.

KILBRIDE LAND SURVEYING LTD.
British Columbia Land Surveyors
Prince George, B.C.
Ph: (604) 562-1196 Fax: 562-3656

F.B.- UP44	D.L.- 2424	REF. NO.- 950213-1
------------	------------	--------------------