

26 FF-226

PLAN OF STATUTORY
 RIGHT OF WAY THROUGH PART OF
 LOT 1, PLAN PGP38955,
 DISTRICT LOT 745, CARIBOO DISTRICT.
 Pursuant to Section 113 of the Land Title Act.
 Required by BC Rail Ltd. pursuant to Chapters 34 and 36,
 Statutes of 1912, and Chapter 354, Revised Statutes of 1979.
 B.C.G.S. 93G.087

PLAN NO. PGP38996

Deposited in the Land Title Office at Prince George this 12 day of JUNE 1995

BRINN A.B. BIGRAS
 REGISTRAR
Pia

PJ 19230
 Pin 23 077 379

Scale: 1 : 2000 (Distances are in metres)

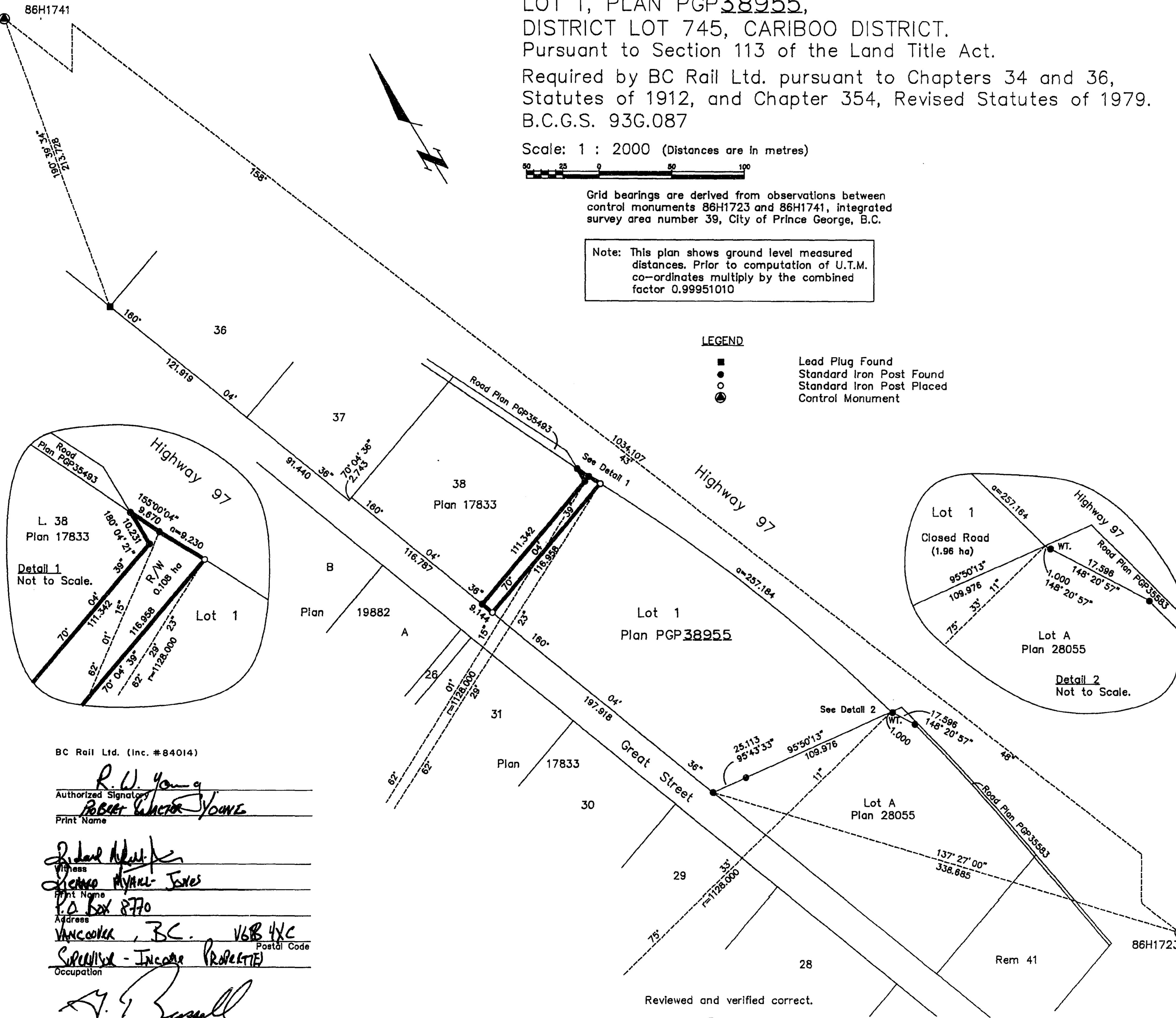


Grid bearings are derived from observations between control monuments 86H1723 and 86H1741, integrated survey area number 39, City of Prince George, B.C.

Note: This plan shows ground level measured distances. Prior to computation of U.T.M. co-ordinates multiply by the combined factor 0.99951010

LEGEND

- Lead Plug Found
- Standard Iron Post Found
- Standard Iron Post Placed
- ⊙ Control Monument



BOOK OF REFERENCE	
DESCRIPTION	AREA
Lot 1, Plan PGP 38955	0.108 ha

I, Gordon Kilbride, a British Columbia Land Surveyor of Prince George in British Columbia, certify that I was present at and personally superintended the survey represented by this plan and that the survey and plan are correct. The survey was completed on the 19 day of April, 1995.

Gordon Kilbride
 Gordon Kilbride, B.C.L.S.

This plan lies within the Fraser-Fort George Regional District. MILE 463.0

KILBRIDE LAND SURVEYING LTD.
 British Columbia Land Surveyors
 Prince George, B.C.
 Ph: (604) 562-1196 Fax: 562-3656

BC Rail Ltd. (Inc. #84014)

R.W. Young
 Authorized Signatory
ROBERT WALTER YOUNG
 Print Name

Richard Hill
 Witness
LEONARD AYAKU-JONES
 Print Name
 P.O. Box 8770
 Address
 VANCOUVER, B.C. V6B 4X6
 Postal Code
 Occupation - Income Properties

A.J. Russell
 Chief Engineer

Reviewed and verified correct.

CR Dawson
 Supervisor of Legal Surveys