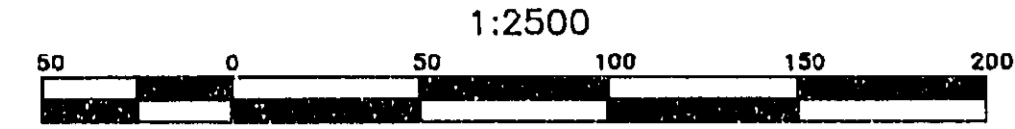


PLAN OF STATUTORY RIGHT-OF-WAY
 IN LOT D DISTRICT LOT 2062 CARIBOO DISTRICT
 PLAN 16556 EXCEPT PARCEL A PLAN 27177
 PURSUANT TO SECTION 99 (1)(e) OF THE LAND TITLE ACT



(BCGS 93G.097.3)

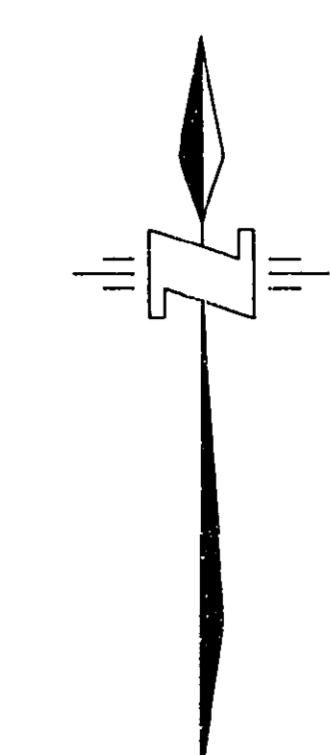
26-FF-226

PLAN PGP38854

DEPOSITED IN THE LAND TITLE OFFICE AT PRINCE GEORGE, B.C.

THIS 25 DAY OF April, 1995

Brian Bigs / 10x
 REGISTRAR P513042



LEGEND

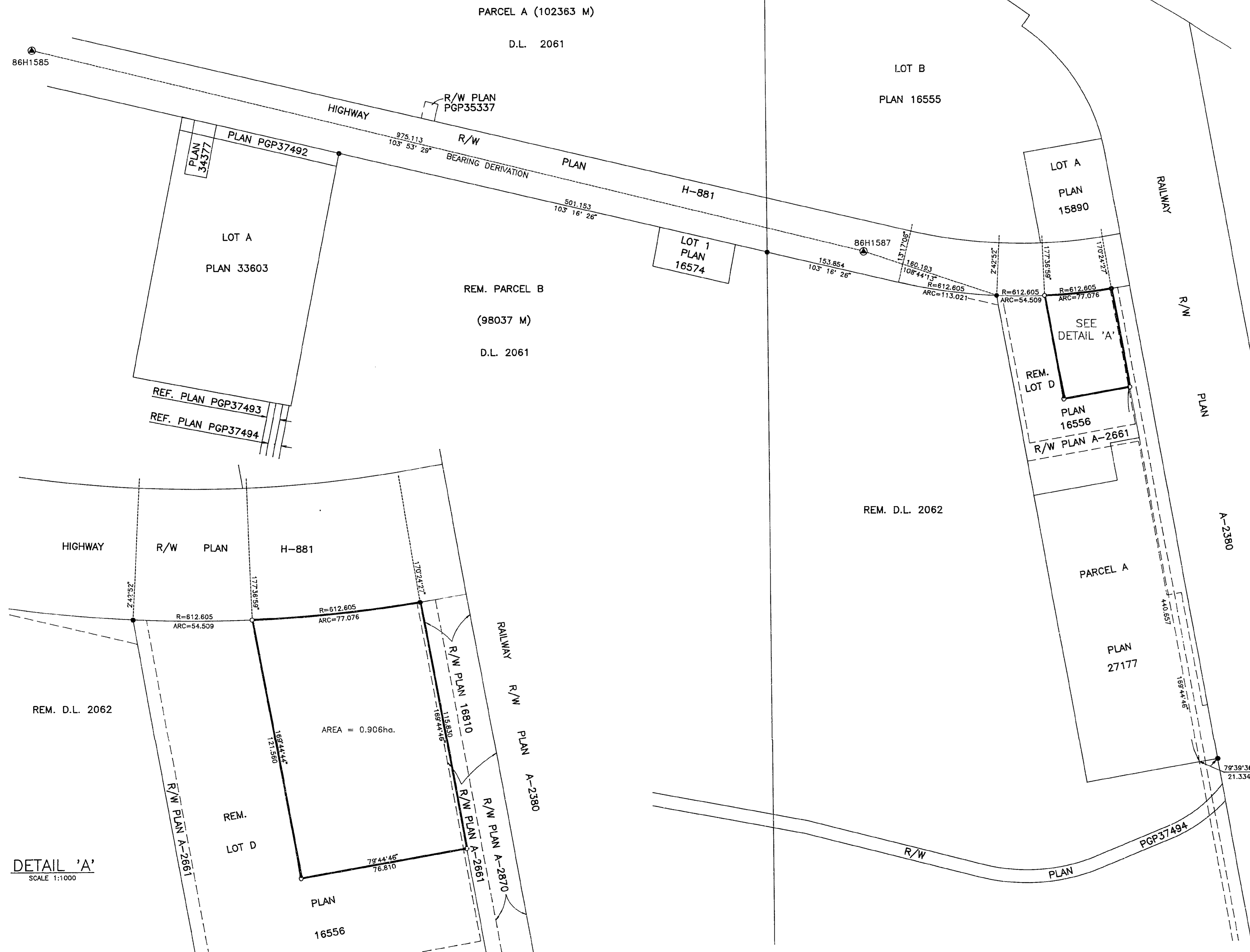
BEARINGS ARE ASTRONOMIC, DERIVED FROM CONTROL MONUMENTS
 86H1585 AND 86H1587, INTEGRATED SURVEY AREA No. 39
 CITY OF PRINCE GEORGE.

FOUND PLACED
 ● CONTROL MONUMENT
 ○ STANDARD IRON POST

ALL DISTANCES ARE IN METRES AND DECIMALS THEREOF.

SEA LEVEL REDUCTION FACTOR = 0.9999075
 UTM SCALE FACTOR = 0.9996047

THIS PLAN SHOWS GROUND LEVEL MEASURED DISTANCES.
 PRIOR TO COMPUTATION OF UTM COORDINATES, MULTIPLY BY
 A COMBINED FACTOR OF 0.9995122.



DETAIL 'A'
 SCALE 1:1000

BOOK OF REFERENCE

DESCRIPTION	LOCATION	AREA
RIGHT-OF-WAY	LOT D PLAN 16556 EXCEPT PARCEL A PLAN 27177	0.906 ha.

I, G.R. FRIMMER, A BRITISH COLUMBIA LAND SURVEYOR
 OF THE CITY OF PRINCE GEORGE, IN BRITISH COLUMBIA,
 CERTIFY THAT I WAS PRESENT AT AND PERSONALLY
 SUPERINTENDED THE SURVEY REPRESENTED BY THIS PLAN,
 AND THAT THE SURVEY AND PLAN ARE CORRECT. THE SURVEY
 WAS COMPLETED ON THE 24 DAY OF April, 1995.

G.R. Frimmer
 GORDON R. FRIMMER B.C.L.S.