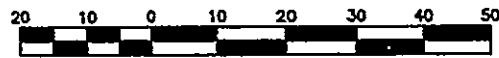


REFERENCE PLAN OF STATUTORY RIGHT-OF-WAY  
THROUGH LOT 49 DISTRICT LOT 1427 CARIBOO DISTRICT  
PLAN 21503

26 FF 226

PLAN PGP38772

PURSUANT TO SECTION 113 OF THE LAND TITLE ACT  
1:1000



(BCGS 93G.097.3)

DEPOSITED IN THE LAND TITLE OFFICE AT PRINCE GEORGE, B.C.

THIS 31 DAY OF March, 19 95

REGISTRAR

PJ 10165

Pid: 009-488-740

LEGEND

BEARINGS ARE ASTRONOMIC, DERIVED FROM CONTROL MONUMENTS  
85H1177 AND 85H1168, INTEGRATED SURVEY AREA No. 39  
CITY OF PRINCE GEORGE.

FOUND PLACED

- CONTROL MONUMENT
- STANDARD IRON POST

ALL DISTANCES ARE IN METRES AND DECIMALS THEREOF.

SEA LEVEL REDUCTION FACTOR = 0.99990686  
UTM SCALE FACTOR = 0.9996

THIS PLAN SHOWS GROUND LEVEL MEASURED DISTANCES.  
PRIOR TO COMPUTATION OF UTM COORDINATES, MULTIPLY BY  
A COMBINED FACTOR OF 0.9995069.

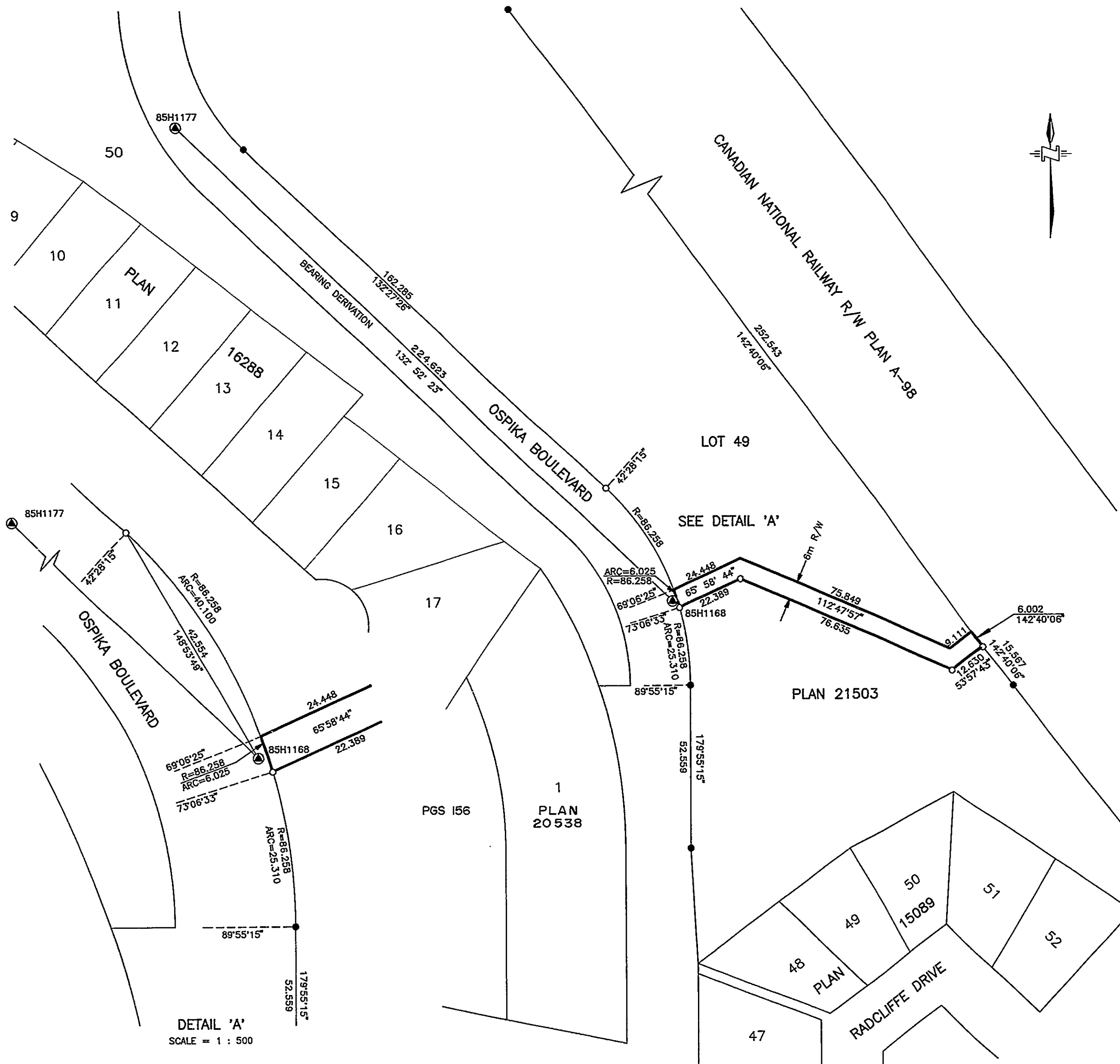
BOOK OF REFERENCE

DESCRIPTION	LOCATION	AREA
6m RIGHT-OF-WAY	LOT 49 PLAN 21503	663.0 m <sup>2</sup>

I, G.R. PFRIMMER, A BRITISH COLUMBIA LAND SURVEYOR  
OF THE CITY OF PRINCE GEORGE, IN BRITISH COLUMBIA,  
CERTIFY THAT I WAS PRESENT AT AND PERSONALLY  
SUPERINTENDED THE SURVEY REPRESENTED BY THIS PLAN,  
AND THAT THE SURVEY AND PLAN ARE CORRECT. THE SURVEY  
WAS COMPLETED ON THE 17th DAY OF FEBRUARY, 19 95.

*G.R. Pfrimmer*  
GORDON R. PFRIMMER B.C.L.S.

McELHANNAY ASSOCIATES PROFESSIONAL LAND SURVEYORS  
1584 7th AVENUE PRINCE GEORGE, B.C. V2L 3P4  
FILE: 2511-5131-01



DETAIL 'A'  
SCALE = 1 : 500