

REFERENCE PLAN OF STATUTORY RIGHT-OF-WAY
IN THE NW 1/4 AND THE SW 1/4 OF
DISTRICT LOT 816 CARIBOO DISTRICT.

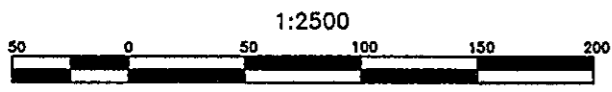
26-R4.59-727

PLAN PGP38763

DEPOSITED IN THE LAND TITLE OFFICE AT PRINCE GEORGE, B.C.
THIS 28 DAY OF MARCH, 1995.

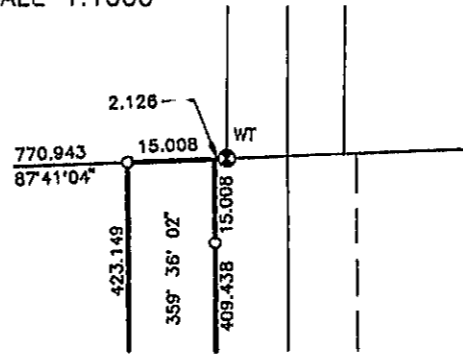
[Signature]
REGISTRAR
P59693

PURSUANT TO SECTION 99 (1)(a) OF THE LAND TITLE ACT



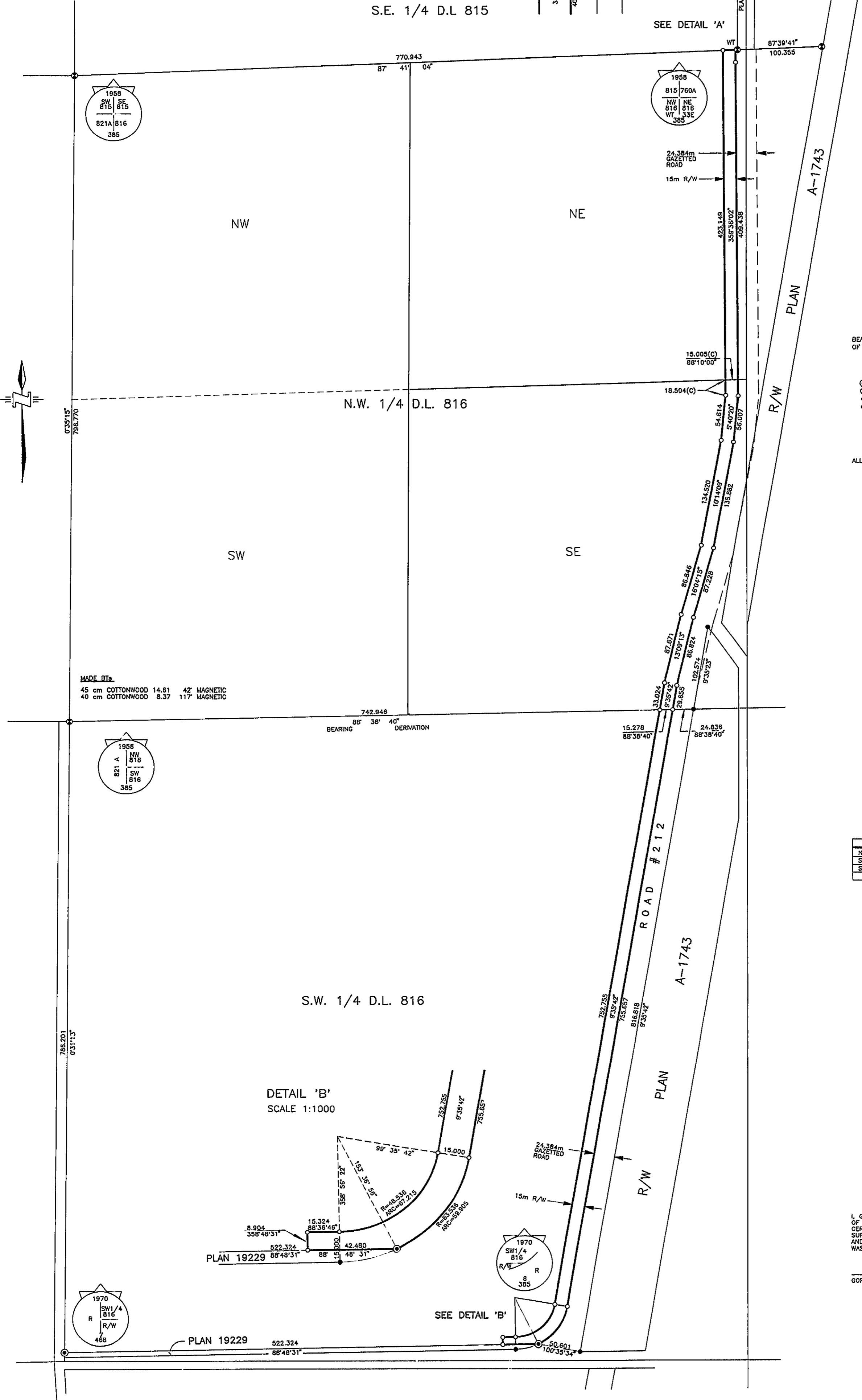
BCGS 936.097

DETAIL 'A'
SCALE 1:1000



S.E. 1/4 D.L. 815

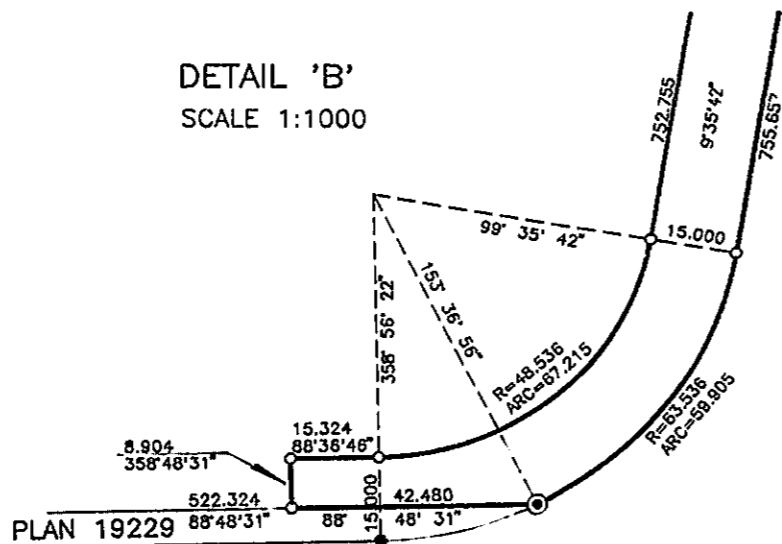
SEE DETAIL 'A'



MADE B.Ts.
45 cm COTTONWOOD 14.61 42 MAGNETIC
40 cm COTTONWOOD 8.37 117 MAGNETIC

BEARING DERIVATION
88° 38' 40"

DETAIL 'B'
SCALE 1:1000



PLAN 19229 88°48'31\"/>

SEE DETAIL 'B'

LEGEND
BEARINGS ARE ASTRONOMIC, DERIVED FROM THE SOUTH BOUNDARY OF THE NW 1/4 OF DISTRICT LOT 816 AS SHOWN ON PLAN A-1743.

- STANDARD CONCRETE POST
- STANDARD CAPPED POST
- STANDARD IRON POST FOUND
- STANDARD IRON POST SET
- B BURIED
- C CALCULATED

ALL DISTANCES ARE IN METRES AND DECIMALS THEREOF.

BOOK OF REFERENCE

LOCATION	DESCRIPTION	AREA
NE 1/4 OF NW1/4 DL 816	15m RIGHT-OF-WAY	0.607 ha
SE 1/4 OF NW1/4 DL 816	15m RIGHT-OF-WAY	0.623 ha
SW 1/4 DL 816	15m RIGHT-OF-WAY	1.25 ha

I, G.R. PRYMER, A BRITISH COLUMBIA LAND SURVEYOR OF THE CITY OF PRINCE GEORGE IN BRITISH COLUMBIA, CERTIFY THAT I WAS PRESENT AT AND PERSONALLY SUPERINTENDED THE SURVEY REPRESENTED BY THIS PLAN, AND THAT THE SURVEY AND PLAN ARE CORRECT. THE SURVEY WAS COMPLETED ON THE 28 DAY OF MARCH, 1995.

[Signature]
GORDON R. PRYMER B.C.L.S.