

26 FF-226

REFERENCE PLAN OF EASEMENT IN REMAINDER OF LOT 11, PLAN 10790, D.L. 1599, CARIBOO DISTRICT.

PLAN NO. PGP 38747

Deposited in the Land Title Office at Prince
George this 23 day of March 1995

B.C.G.S. 93G.086

Scale: 1 : 750 (Distances are in metres)



Grid bearings are derived from observations between
control monuments 86H1509 and 79H8459, integrated
survey area number 39, City of Prince George, B.C.

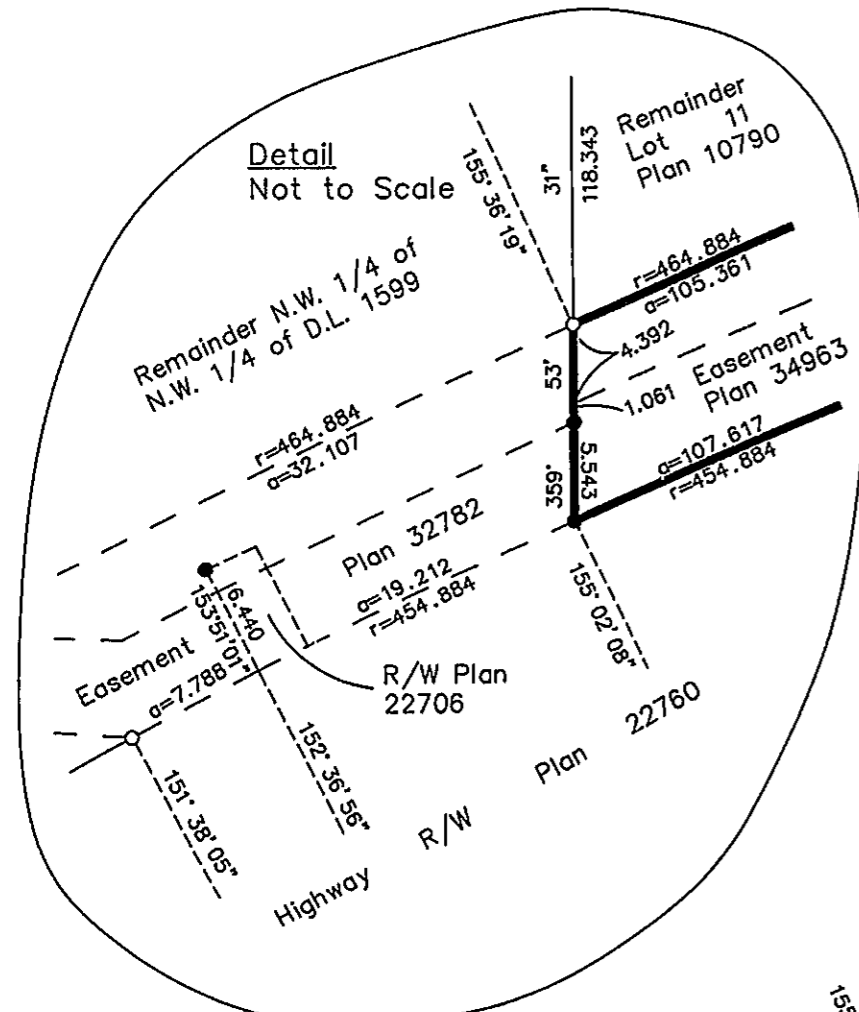
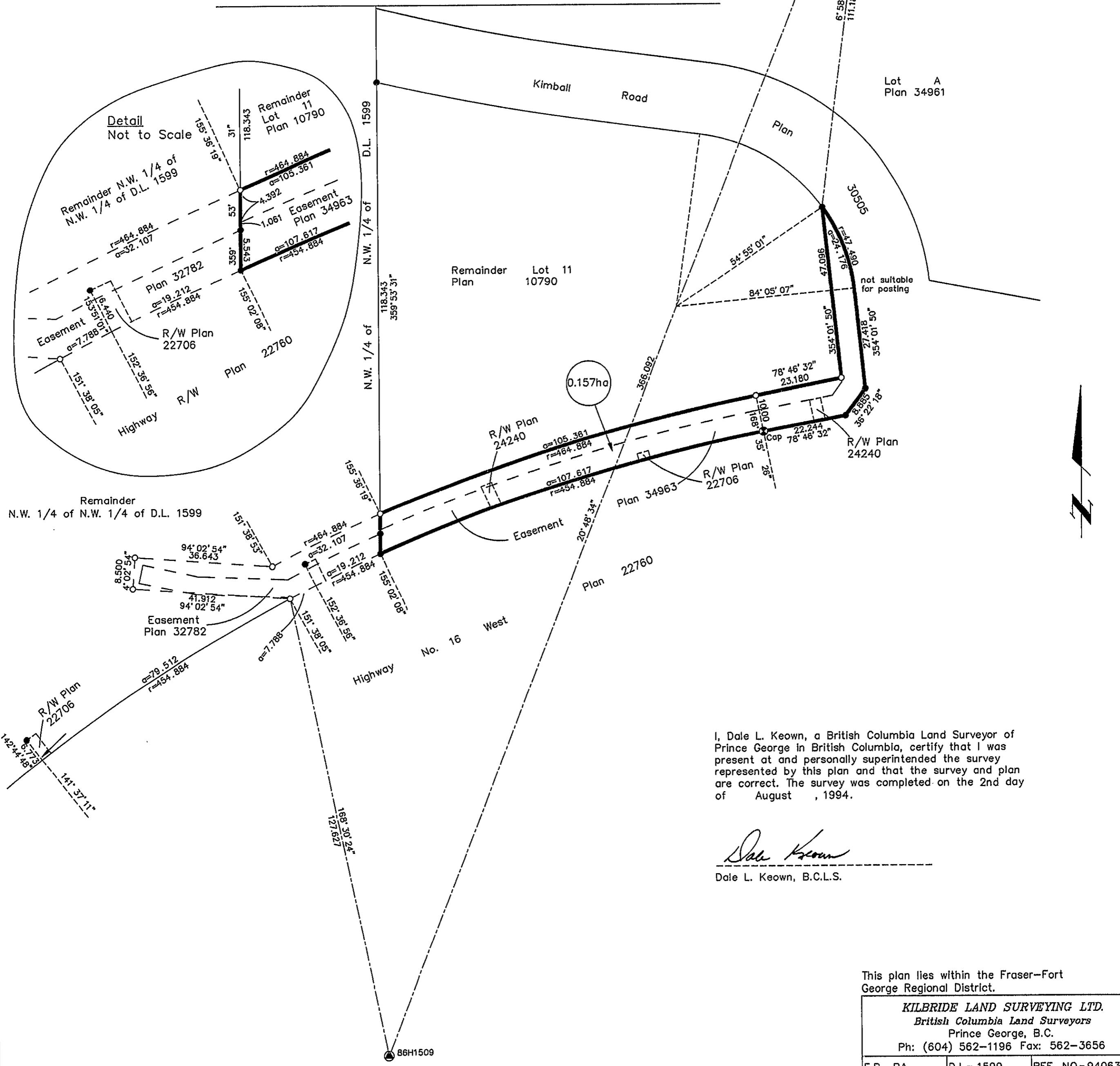
LEGEND

- Standard Capped Post Found
- Standard Iron Post Found
- Standard Iron Post Placed
- ⊙ Control Monument

B. Biggs' Per: Jy
REGISTRAR
PJ 9258

Note: This plan shows ground level measured
distances. Prior to computation of U.T.M.
co-ordinates multiply by the combined
factor 0.99948278

D. L. 1600



I, Dale L. Keown, a British Columbia Land Surveyor of
Prince George in British Columbia, certify that I was
present at and personally superintended the survey
represented by this plan and that the survey and plan
are correct. The survey was completed on the 2nd day
of August, 1994.

Dale Keown
Dale L. Keown, B.C.L.S.

This plan lies within the Fraser-Fort
George Regional District.

KILBRIDE LAND SURVEYING LTD. British Columbia Land Surveyors Prince George, B.C. Ph: (604) 562-1196 Fax: 562-3656		
F.B.- RA	D.L.- 1599	REF. NO.- 940633

John Smith