

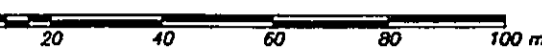
TUTORY RIGHT OF WAY THROUGH PARTS OF DISTRICT LOT 2508 CARIBOO DISTRICT

PLAN PGP 38738

FF-226

B.C.G.S. 93G.096/097

DEPOSITED IN THE LAND TITLE OFFICE AT PRINCE GEORGE B.C. THIS 23 DAY OF March 1925



AND DECIMALS THEREOF UNLESS NOTED OTHERWISE.

CONTROL MONUMENTS BETWEEN CONTROL MONUMENTS #85H1189, #85H1206 AND #85H1310, PRINCE GEORGE

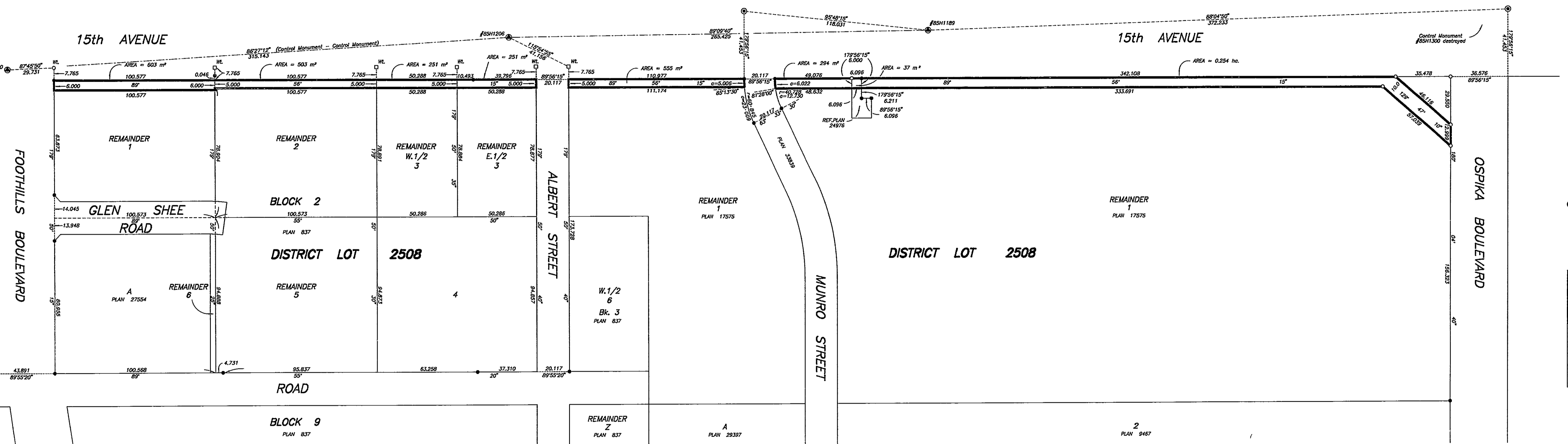
MEASURED DISTANCES. PRIOR TO COMPUTATION OF UTM COORDINATES, MULTIPLY BY COMBINED FACTOR 0.99950750

CONTROL MONUMENT FOUND
CONTROL MONUMENT FOUND
CONTROL MONUMENT FOUND
CONTROL MONUMENT FOUND

RESERVED FOR OVERHEAD TRANSMISSION OF ELECTRICAL POWER

BOOK OF REFERENCE	
DESCRIPTION	AREA
LOT 1, BLOCK 2, DISTRICT LOT 2508 CARIBOO DISTRICT PLAN 837, EXCEPT PLANS 17638 & 27554	603 m ²
LOT 2, BLOCK 2, DISTRICT LOT 2508 CARIBOO DISTRICT PLAN 837, EXCEPT PLANS 17638 & 27554	503 m ²
WEST 1/2 OF LOT 3, BLOCK 2, DISTRICT LOT 2508 CARIBOO DISTRICT PLAN 837, EXCEPT PLAN PGP38138	251 m ²
EAST 1/2 OF LOT 3, BLOCK 2, DISTRICT LOT 2508 CARIBOO DISTRICT PLAN 837, EXCEPT PLAN 17638	251 m ²
LOT 1, DISTRICT LOT 2508 CARIBOO DISTRICT PLAN 17575, EXCEPT PLAN 33839	0.343 ha.

Brian Byras REGISTRAR
P5 9081
DEPOSITED PURSUANT TO SECTION 113 OF THE LAND TITLE ACT



BRITISH COLUMBIA HYDRO AND POWER AUTHORITY

Hajime Maeno
Hajime Maeno

Sarah Klemionex
WITNESS Sarah Klemionex

333 Munro St, Vancouver, BC V6B5R3
ADDRESS

Legal Services Clerk

I, B.C. FORSTER, A BRITISH COLUMBIA LAND SURVEYOR OF
SURREY IN BRITISH COLUMBIA, CERTIFY THAT I WAS PRESENT
AT AND PERSONALLY SUPERINTENDED THE SURVEY REPRESENTED
BY THIS PLAN AND THAT THE SURVEY AND PLAN ARE CORRECT.
THE SURVEY WAS COMPLETED ON THE 26 DAY OF October 1994.

B.C. Forster B.C.L.S.

THIS PLAN LIES WITHIN THE FRASER - FORT GEORGE REGIONAL DISTRICT

PLAN OF STATUTORY RIGHT OF WAY THROUGH PARTS OF DISTRICT LOT 2508 CARIBOO DISTRICT

PLAN PGP 38738

26-FF-226

B.C.G.S. 93G.096/097

DEPOSITED IN THE LAND TITLE OFFICE AT THIS 23 DAY OF March



ALL DISTANCES ARE IN METRES AND DECIMALS THEREOF UNLESS NOTED OTHERWISE.

GRID BEARINGS ARE DERIVED FROM OBSERVATIONS BETWEEN CONTROL MONUMENTS #85H1189, #85H1206 AND #85H1310, INTEGRATED SURVEY AREA #39 - PRINCE GEORGE.

THIS PLAN SHOWS GROUND LEVEL MEASURED DISTANCES. PRIOR TO COMPUTATION OF UTM COORDINATES, MULTIPLY BY COMBINED FACTOR 0.99950750

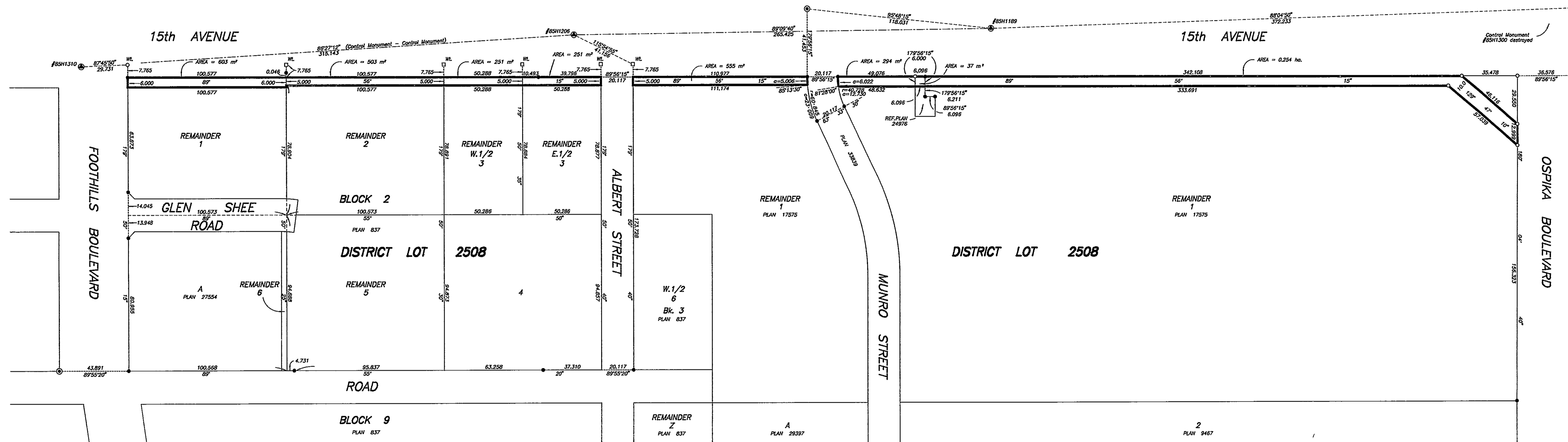
LEGEND

- DENOTES CONTROL MONUMENT
• DENOTES STANDARD CONCRETE POST FOUND
• DENOTES STANDARD IRON POST FOUND
□ DENOTES LEAD PLUG PLACED
○ DENOTES STANDARD IRON POST PLACED

BOOK OF REFERENCE table with columns: DESCRIPTION, AREA. Includes entries for Lot 1, Lot 2, West 1/2 of Lot 3, East 1/2 of Lot 3, and Lot 1 of District Lot 2508.

Devin Biggs
P.S. 9081
DEPOSITED PURSUANT TO SECTION 113 OF

RIGHT OF WAY REQUIRED FOR OVERHEAD TRANSMISSION OF ELECTRICAL POWER



BRITISH COLUMBIA HYDRO AND POWER AUTHORITY

Hajime maeno

Sarah Kiemionee

333 Dunsmuir St, Vancouver, BC, V6B5R3

Legal Services Clerk

I, B.C. FORSTER, A BRITISH COLUMBIA LAND SURVEYOR IN BRITISH COLUMBIA, CERTIFY THAT I AM PERSONALLY SUPERINTENDING THE SURVEY BY THIS PLAN AND THAT THE SURVEY AND

THE SURVEY WAS COMPLETED ON THE 21st

THIS PLAN LIES WITHIN THE FRASER - FORT GEORGE REGIONAL DISTRICT

5792

CIRCUIT #60L354/357

PROP.DIV.FILE: 805-1402.0(18)

805-57-X210(2)