

26-FF-226

PLAN NO. PGP 38668

Deposited in the Land Title Office at Prince George this 22 day of February, 1995

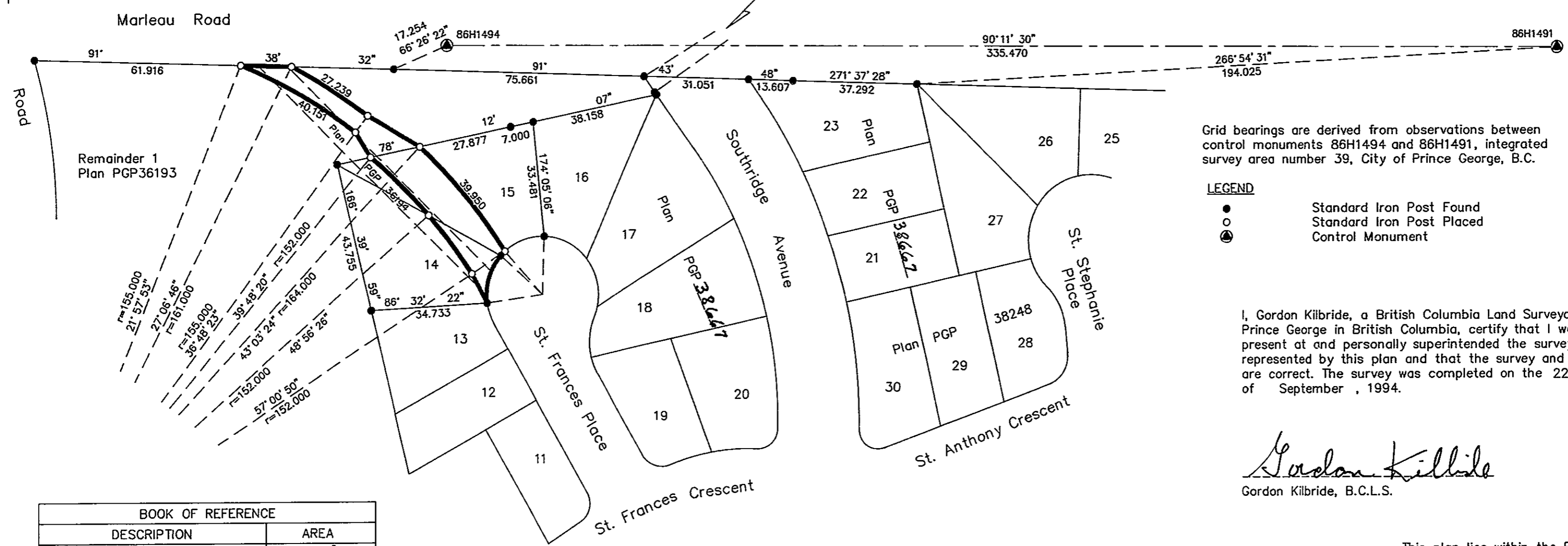
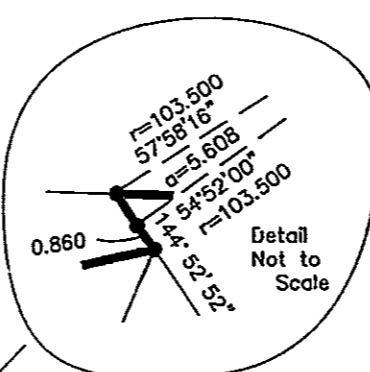
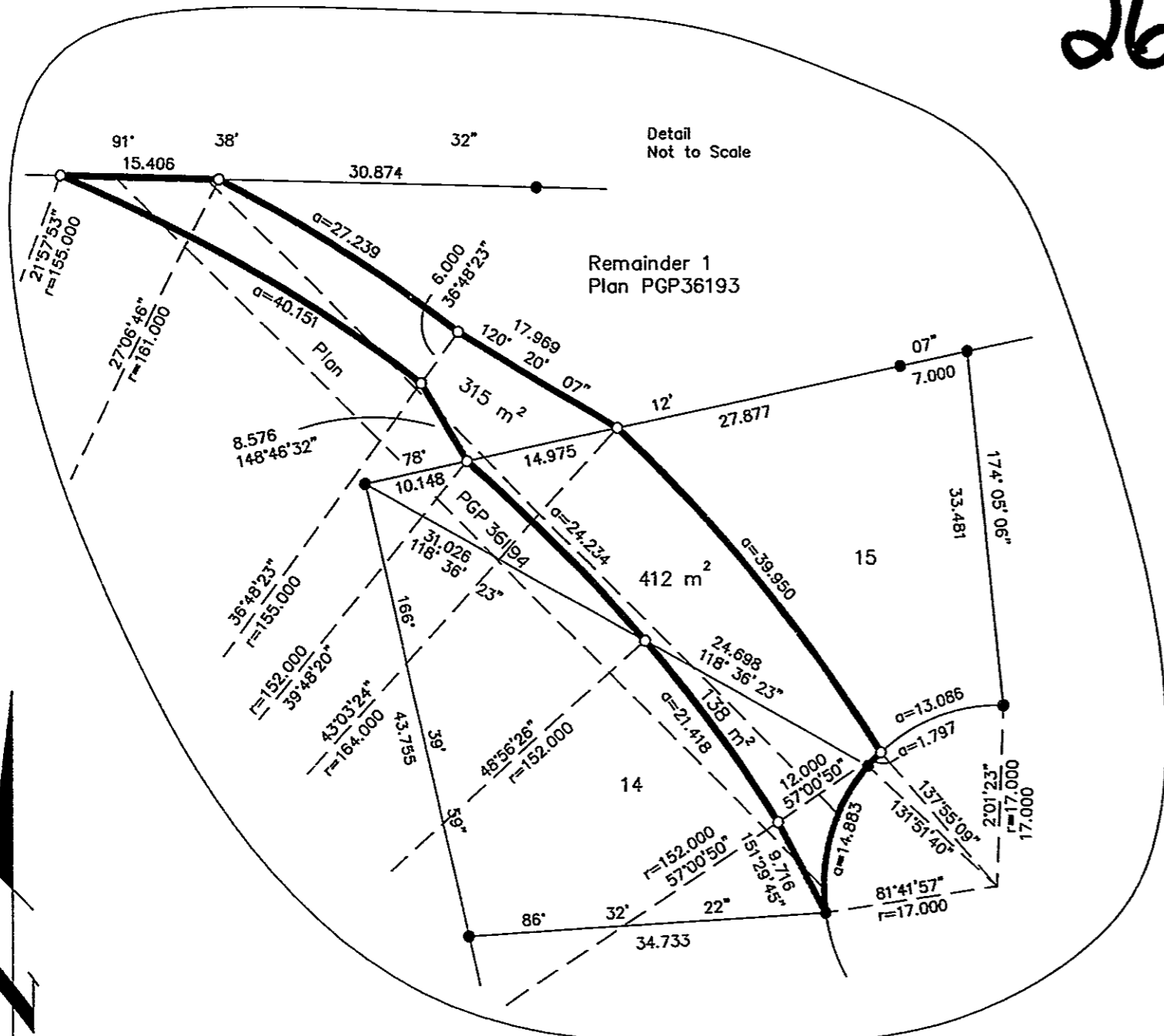
REGISTRAR
PJ5985

REFERENCE PLAN OF STATUTORY RIGHT OF WAY IN REMAINDER OF LOT 1, PLAN PGP36193, AND LOTS 14 AND 15, PLAN PGP 38667, DISTRICT LOT 2003, CARIBOO DISTRICT.

B.C.G.S. 93G.087
Pursuant to Section 113 of the Land Title Act.
Scale: 1 : 1000 (Distances are in metres)



Note: This plan shows ground level measured distances. Prior to computation of U.T.M. co-ordinates multiply by the combined factor 0.99949886



Grid bearings are derived from observations between control monuments 86H1494 and 86H1491, integrated survey area number 39, City of Prince George, B.C.

LEGEND
● Standard Iron Post Found
○ Standard Iron Post Placed
⊙ Control Monument

I, Gordon Kilbride, a British Columbia Land Surveyor of Prince George in British Columbia, certify that I was present at and personally superintended the survey represented by this plan and that the survey and plan are correct. The survey was completed on the 22 day of September, 1994.

Gordon Kilbride
Gordon Kilbride, B.C.L.S.

BOOK OF REFERENCE	
DESCRIPTION	AREA
Rem. Lot 1 Plan PGP36193	315 m ²
Lot 14 Plan PGP 38667	138 m ²
Lot 15 Plan PGP 38667	412 m ²

This plan lies within the Fraser-Fort George Regional District.

KILBRIDE LAND SURVEYING LTD.
British Columbia Land Surveyors
Prince George, B.C.
Ph: (604) 562-1196 Fax: 562-3656
F.B.- UK 52 | D.L.- 2003 | REF. NO.- 940139R3