

26 FF-226

EXPLANATORY PLAN TO ACCOMPANY A COVENANT ON
LOTS 1 - 18 INCLUSIVE, PLAN PGP 38626 -
DISTRICT LOT 2097
CARIBOO DISTRICT

PLAN No. PGP 38628

DEPOSITED IN THE LAND TITLE OFFICE
AT PRINCE GEORGE, B.C., THIS 09th
DAY OF FEBRUARY, 1995

[Signature]
REGISTRAR
PS 4675

SCALE = 1 : 1000 B.C.G.S. 93G.096



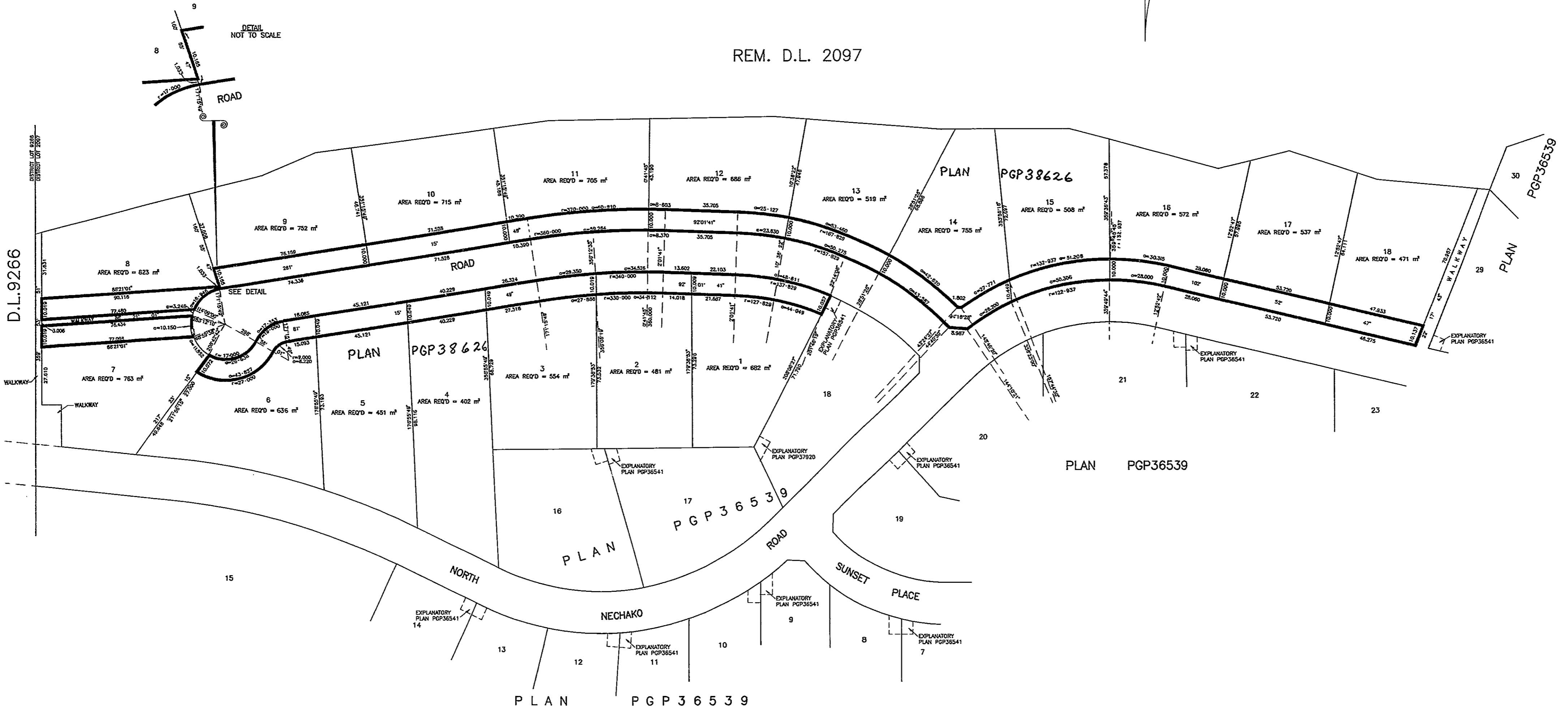
DISTANCES ARE SHOWN IN METRES.

BEARINGS ARE ASTRONOMIC, DERIVED FROM PLAN PGP 38626

BOOK OF REFERENCE	
DESCRIPTION	AREA REQUIRED
ALL LOTS ON PLAN PGP 38626 -	
LOT 1	682m ²
LOT 2	481m ²
LOT 3	554m ²
LOT 4	402m ²
LOT 5	451m ²
LOT 6	636m ²
LOT 7	763m ²
LOT 8	823m ²
LOT 9	752m ²

BOOK OF REFERENCE (CONTINUED)	
DESCRIPTION	AREA REQUIRED
ALL LOTS ON PLAN PGP 38626 -	
LOT 10	715m ²
LOT 11	705m ²
LOT 12	686m ²
LOT 13	519m ²
LOT 14	755m ²
LOT 15	508m ²
LOT 16	572m ²
LOT 17	537m ²
LOT 18	471m ²

REM. D.L. 2097



CERTIFIED CORRECT
ACCORDING TO LAND TITLE OFFICE RECORDS
THIS 9th DAY OF FEBRUARY, 1995.

[Signature]
R. L. JOHNS, B.C.L.S.

THIS PLAN LIES WITHIN THE FRASER-FORT GEORGE REGIONAL DISTRICT.

R. L. JOHNS LAND SURVEYING LTD.
LEGAL AND ENGINEERING SURVEYS
240 VICTORIA STREET
PRINCE GEORGE, B. C. V2L 2A4
PHONE: (604)562-5759
FAX: (604)562-5703