

# 26 FF-226

EXPLANATORY PLAN TO ACCOMPANY A STATUTORY BUILDING SCHEME ON  
 LOTS 1 - 18 INCLUSIVE, PLAN PGP38626 - -  
 DISTRICT LOT 2097  
 CARIBOO DISTRICT

SCALE = 1 : 1000 B.C.G.S. 93G.096



DISTANCES ARE SHOWN IN METRES.

BEARINGS ARE ASTRONOMIC, DERIVED FROM PLAN PGP38626

BOOK OF REFERENCE	
DESCRIPTION	AREA REQUIRED
ALL LOTS ON PLAN PGP38626 -	
LOT 1	258m <sup>2</sup>
LOT 2	258m <sup>2</sup>
LOT 3	258m <sup>2</sup>
LOT 4	413m <sup>2</sup>
LOT 5	393m <sup>2</sup>
LOT 6	106m <sup>2</sup>
LOT 7	128m <sup>2</sup>
LOT 8	47m <sup>2</sup>
LOT 9	43m <sup>2</sup>

BOOK OF REFERENCE (CONTINUED)	
DESCRIPTION	AREA REQUIRED
ALL LOTS ON PLAN PGP38626 -	
LOT 10	91m <sup>2</sup>
LOT 11	90m <sup>2</sup>
LOT 12	103m <sup>2</sup>
LOT 13	107m <sup>2</sup>
LOT 14	243m <sup>2</sup>
LOT 15	239m <sup>2</sup>
LOT 16	156m <sup>2</sup>
LOT 17	174m <sup>2</sup>
LOT 18	156m <sup>2</sup>

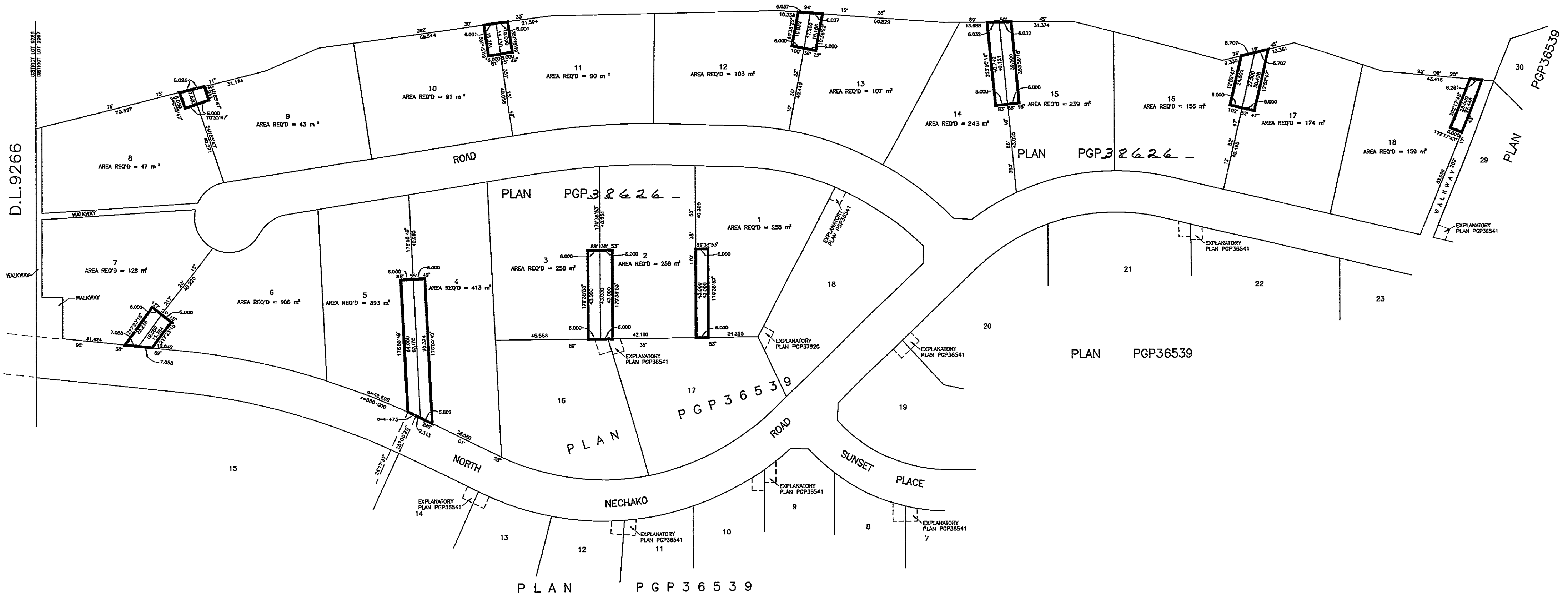
PLAN No. PGP 38627

DEPOSITED IN THE LAND TITLE OFFICE  
 AT PRINCE GEORGE, B.C., THIS 09<sup>th</sup>  
 DAY OF FEBRUARY 1995.

*[Signature]*  
 REGISTRAR

PJ4673

REM. D.L. 2097



CERTIFIED CORRECT  
 ACCORDING TO LAND TITLE OFFICE RECORDS  
 THIS 9<sup>th</sup> DAY OF FEBRUARY, 1995.

*[Signature]*  
 R. L. JOHNS, B.C.L.S.

THIS PLAN LIES WITHIN THE FRASER-FORT GEORGE REGIONAL DISTRICT.

R. L. JOHNS LAND SURVEYING LTD.  
 LEGAL AND ENGINEERING SURVEYS  
 240 VICTORIA STREET  
 PRINCE GEORGE, B. C. V2L 2J4  
 PHONE: (604)562-5759  
 FAX: (604)562-5703