

26 FF-226

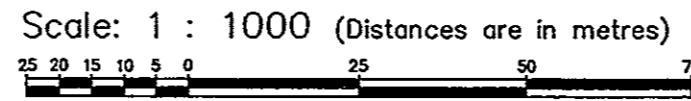
PLAN OF EASEMENT THROUGH
PART OF LOT 2, PLAN PGP
DISTRICT LOT 4047, CARIBOO DISTRICT.

PLAN NO. PGP 38609

Deposited in the Land Title Office at Prince
George this 2 day of February 1995

B.C.G.S. 93G.097

Brian Bigras J.P.S.
REGISTRAR
P53914

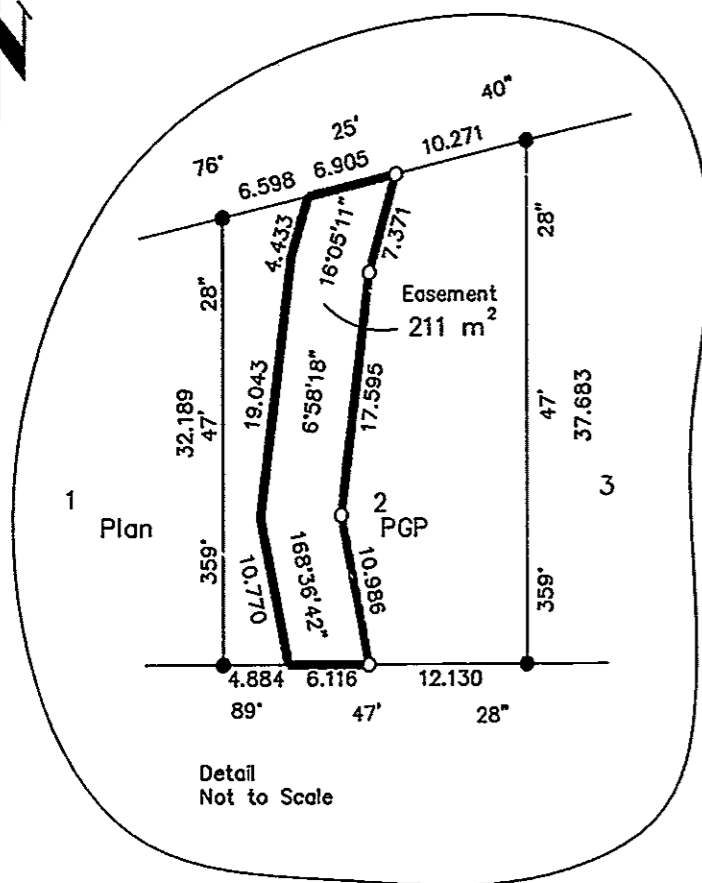
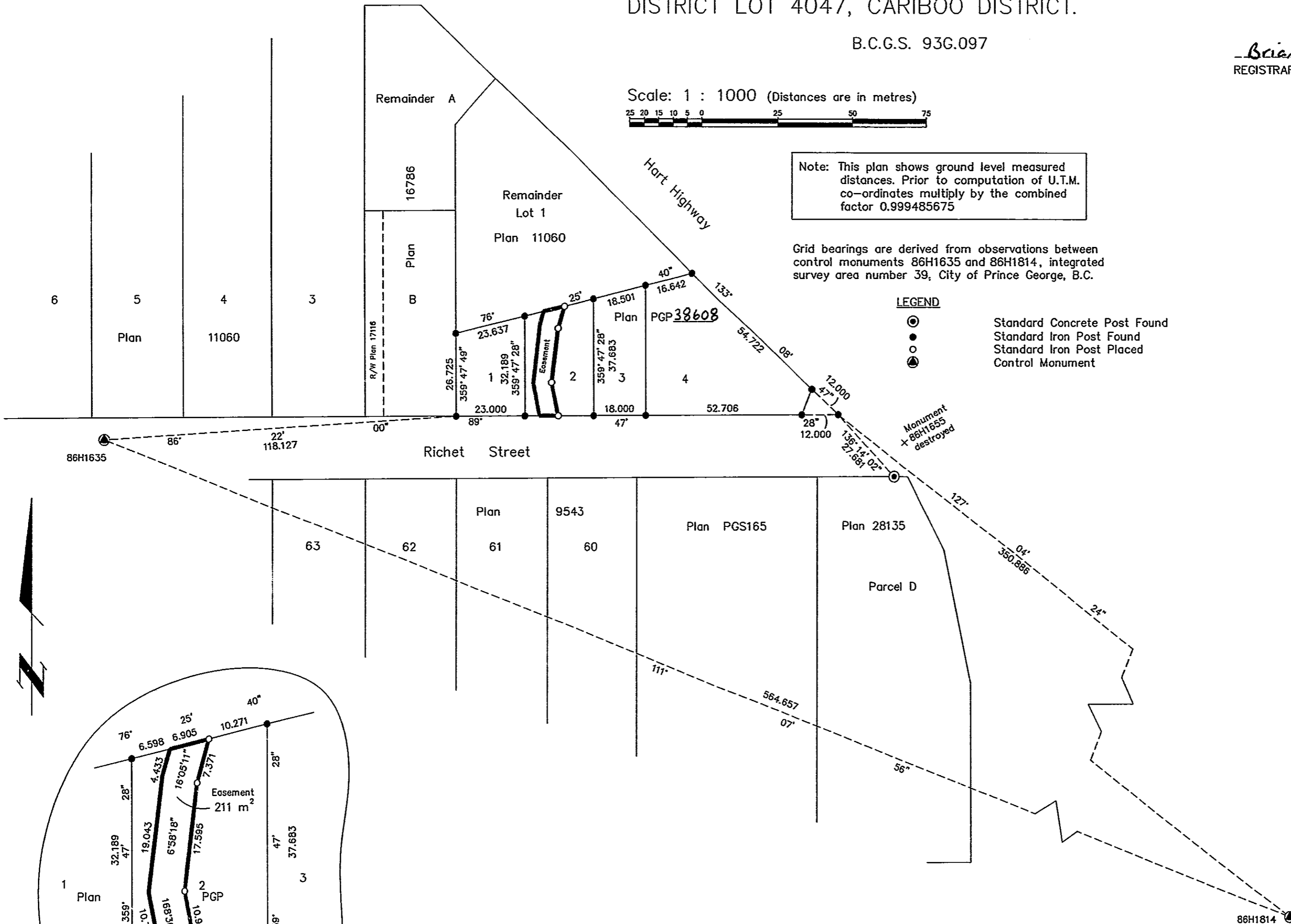


Note: This plan shows ground level measured
distances. Prior to computation of U.T.M.
co-ordinates multiply by the combined
factor 0.999485675

Grid bearings are derived from observations between
control monuments 86H1635 and 86H1814, integrated
survey area number 39, City of Prince George, B.C.

LEGEND

- Standard Concrete Post Found
- Standard Iron Post Found
- Standard Iron Post Placed
- ⊙ Control Monument



I, Gordon Kilbride, a British Columbia Land Surveyor of
Prince George in British Columbia, certify that I was
present at and personally superintended the survey
represented by this plan and that the survey and plan
are correct. The survey was completed on the 30th day
of August, 1994.

This plan lies within the Fraser-Fort
George Regional District.

Gordon Kilbride
Gordon Kilbride, B.C.L.S.

KILBRIDE LAND SURVEYING LTD. British Columbia Land Surveyors Prince George, B.C. Ph: (604) 562-1196 Fax: 562-3656		
F.B.- VF 05	D.L.- 4047	REF. NO.- 940412RW