

PLAN OF STATUTORY RIGHT OF WAY THROUGH
 REM. LOT 2, BLOCK 14, D.L. 1592,
 PLAN 1385 AND LOT 1, D.L.'S 1571, 1592,
 PLAN 30782, CARIBOO DISTRICT

B.C.G.S. 936.086

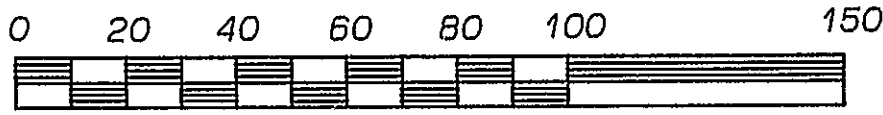
PLAN PGP38561

Deposited in the Land Title Office
 at Prince George B.C.
 this 16 day of JAN . 1995.

Registrar *[Signature]* PJ1476

26-FF-226

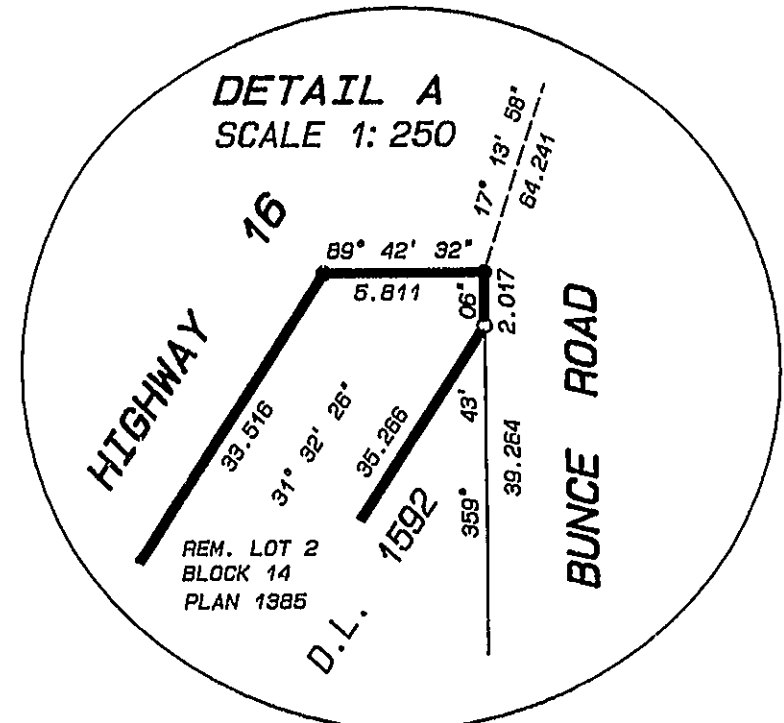
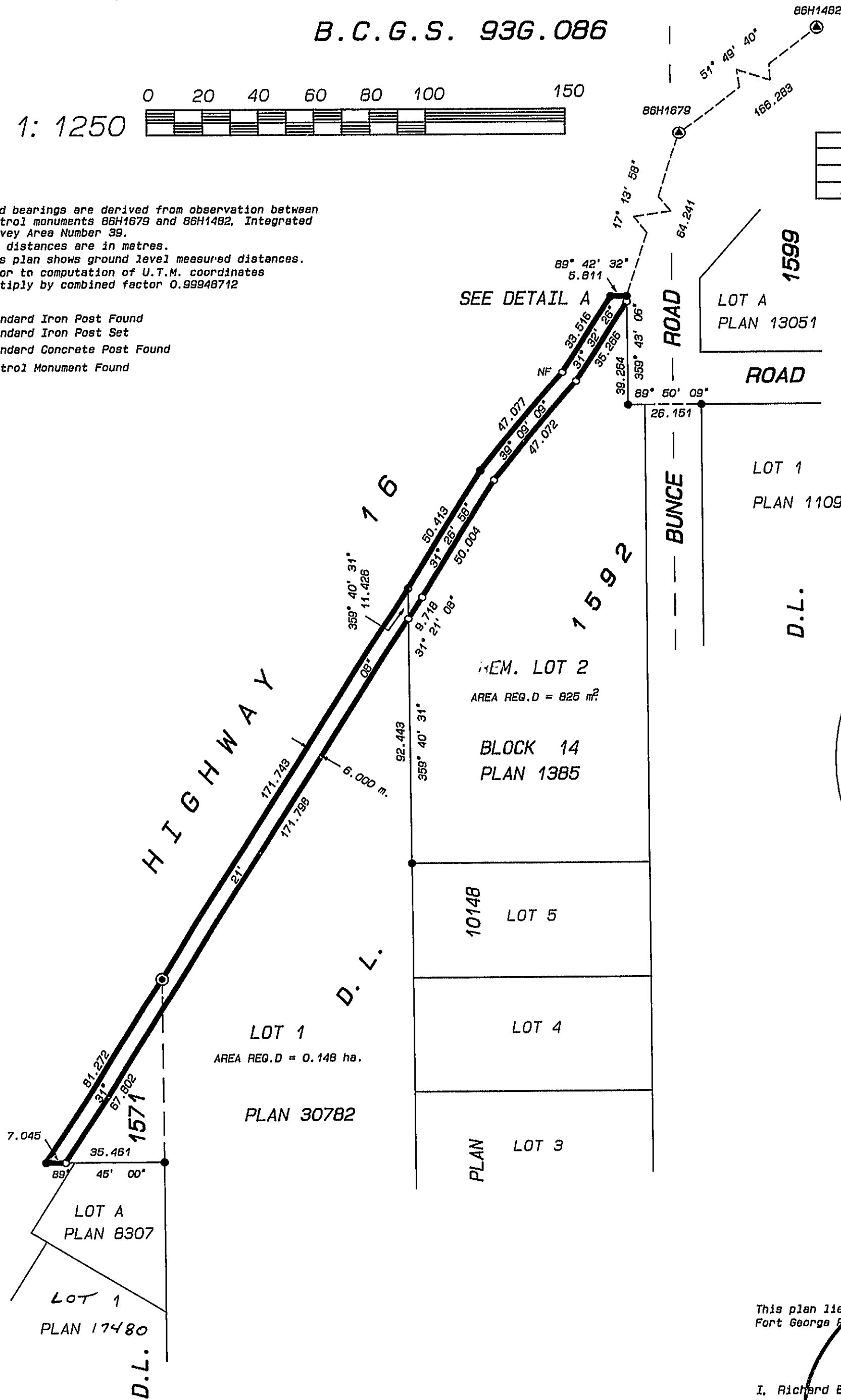
SCALE 1: 1250



LEGEND Grid bearings are derived from observation between control monuments 86H1679 and 86H1482, Integrated Survey Area Number 39. All distances are in metres. This plan shows ground level measured distances. Prior to computation of U.T.M. coordinates multiply by combined factor 0.99948712

- Standard Iron Post Found
- Standard Iron Post Set
- ⊙ Standard Concrete Post Found
- ⊕ Control Monument Found

BOOK OF REFERENCE	AREA
DESCRIPTION	
REM. LOT 2, BLOCK 14, D.L. 1592, PLAN 1385	825 m ²
LOT 1, D.L.'S 1571 AND 1592, PLAN 30782	0.148 ha.



This plan lies within the Fraser-Fort George Regional District.

I, Richard E. Gook, a British Columbia land surveyor, of the city of Prince George, in British Columbia, certify that I was present at and personally superintended the survey represented by this plan, and that the survey and plan are correct. The survey was completed on the 10th day of November, 1994.

[Signature]

B.C.L.S.

R.E. GOOK & ASSOCIATES
B.C. & CANADA LANDS SURVEYORS

691 FRONT STREET * 886 VANCOUVER STREET
 QUESNEL, B.C. V2J 2K9 PRINCE GEORGE, B.C. V2L 2P5
 PHONE: 992-2424 PHONE: 564-4242
 FAX: 992-3434 FAX: 564-5343