

EXPLANATORY PLAN TO ACCOMPANY
 A PARTY WALL AGREEMENT AND
 ENCROACHMENT AGREEMENT ON
 LOTS 20 AND 21, BLOCK 159, PLAN 1268
 DISTRICT LOT 343
 CARIBOO DISTRICT

PLAN No. PGP **38378**

DEPOSITED IN THE LAND TITLE OFFICE
 AT PRINCE GEORGE, B.C., THIS **21st**
 DAY OF **October**, 19**94**.

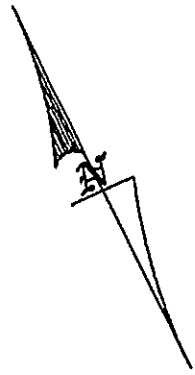


DISTANCES ARE SHOWN IN METRES.

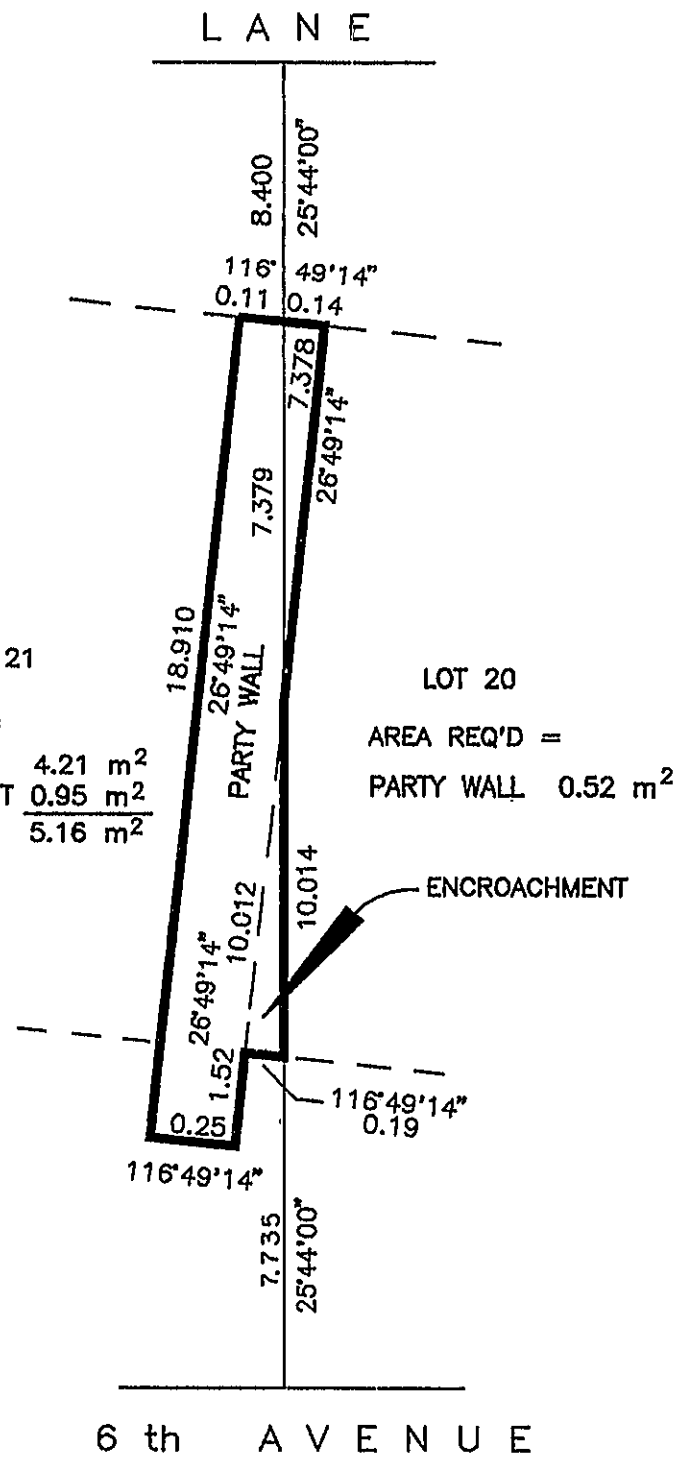
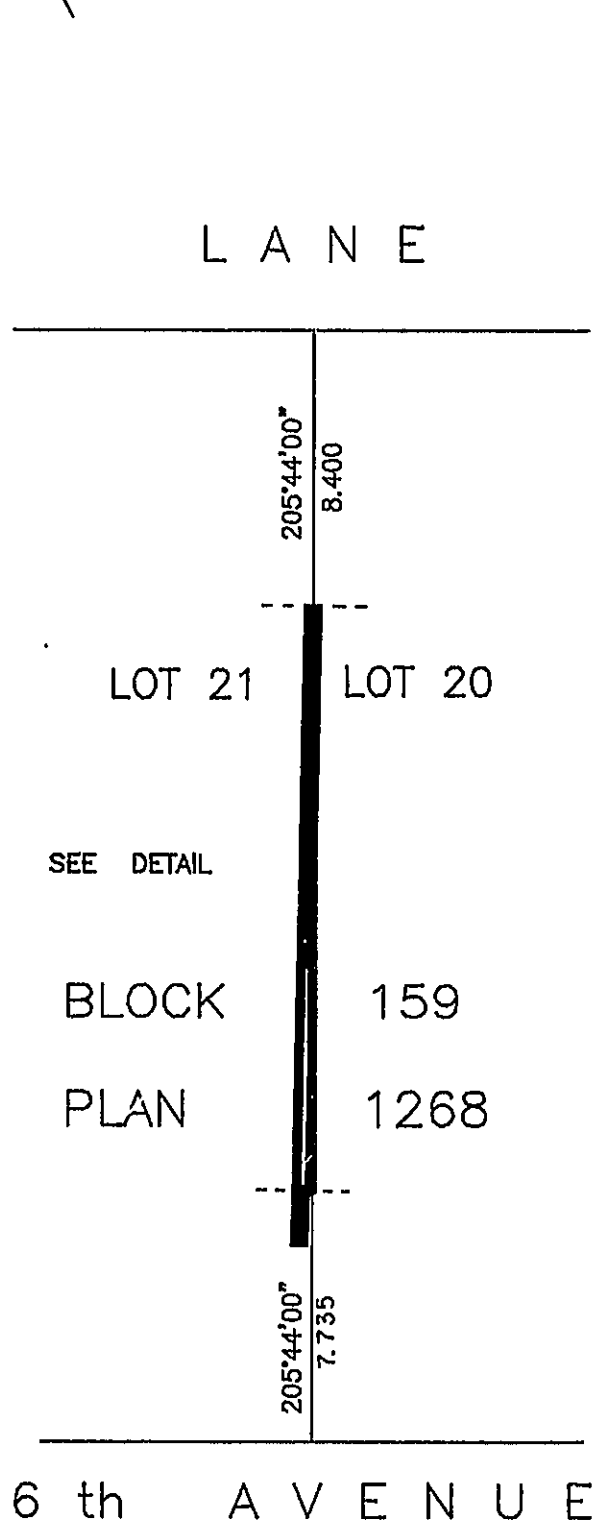
BEARINGS ARE ASTRONOMIC, DERIVED FROM PLAN 1268.

[Signature]
 REGISTRAR
PH42465

26 FF-226



DETAIL
 NOT TO SCALE



LOT 21	AREA REQ'D =	LOT 20	AREA REQ'D =
	PARTY WALL 4.21 m ²		PARTY WALL 0.52 m ²
	ENCROACHMENT 0.95 m ²		
	TOTAL 5.16 m ²		

CERTIFIED CORRECT

ACCORDING TO LAND TITLE OFFICE RECORDS
 AND FIELD MEASUREMENTS, THIS 23rd
 DAY OF SEPTEMBER, 1994.

[Signature]
 R. L. JOHNS, B.C.L.S.

THIS PLAN LIES WITHIN THE FRASER-FORT GEORGE REGIONAL DISTRICT.

R. L. JOHNS LAND SURVEYING LTD.
 LEGAL AND ENGINEERING SURVEYS
 240 VICTORIA STREET
 PRINCE GEORGE, B. C. V2L 2J4
 PHONE: (604)562-5759
 FAX: (604)562-5703