

PLAN NO. PGP38249

Deposited in the Land Title Office at Prince George this 13 day of September 1994

[Signature]
REGISTRAR
PH 36946

REFERENCE PLAN OF
STATUTORY RIGHT OF WAY
IN LOTS 1, 5, 6 AND 7,
PLAN PGP38248
DISTRICT LOT 2003,
CARIBOO DISTRICT.

B.C.G.S. 93G.087

Scale: 1 : 1000 (Distances are in metres)



Note: This plan shows ground level measured distances. Prior to computation of U.T.M. co-ordinates multiply by the combined factor 0.99949886

Grid bearings are derived from observations between control monuments 86H1494 and 86H1491, integrated survey area number 39, City of Prince George, B.C.

LEGEND

- Standard Iron Post Found
- Standard Iron Post Placed
- ⊙ Control Monument

I, Gordon Kilbride, a British Columbia Land Surveyor of Prince George in British Columbia, certify that I was present at and personally superintended the survey represented by this plan and that the survey and plan are correct. The survey was completed on the 22 day of July, 1994.

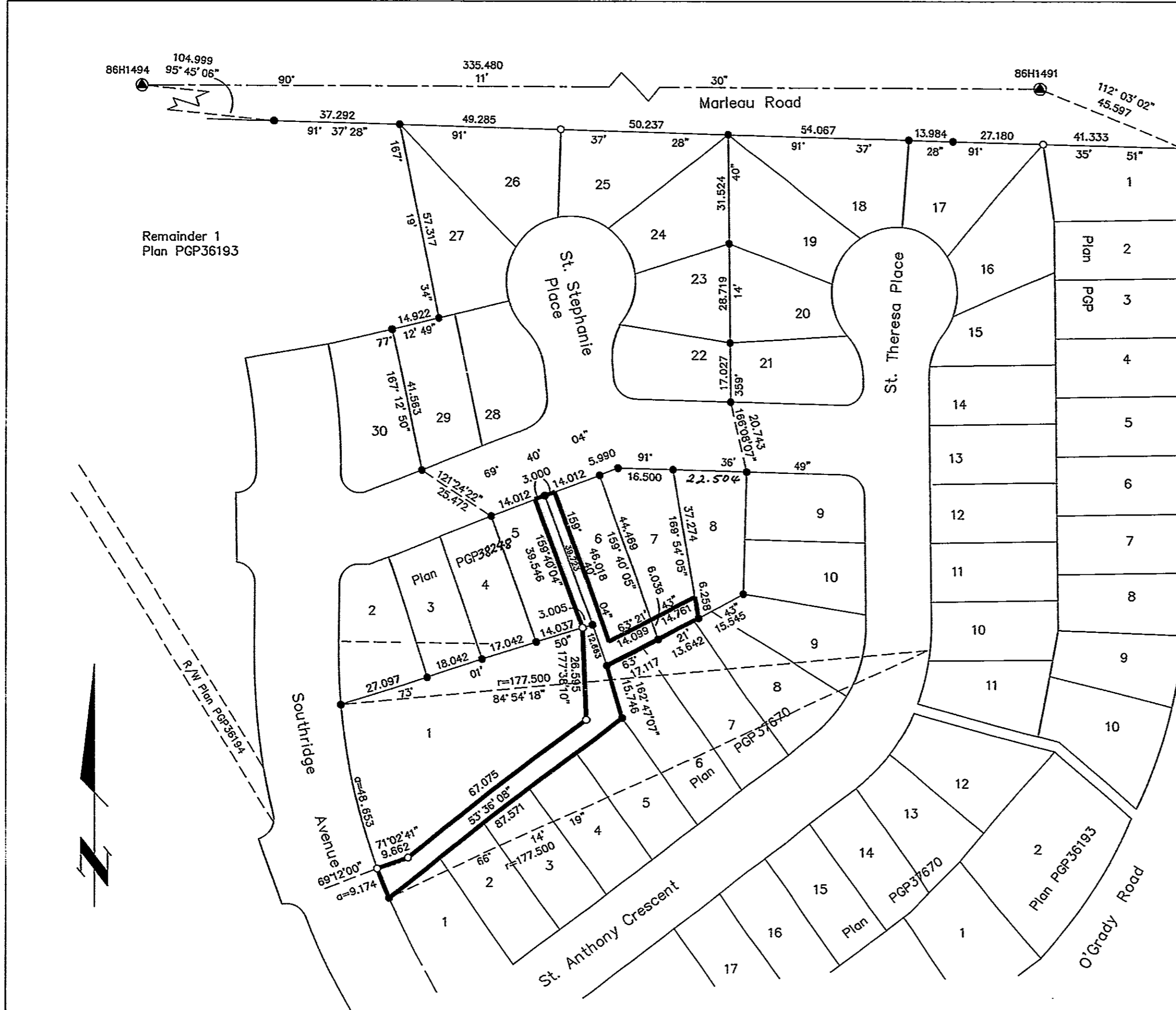
[Signature]
Gordon Kilbride, B.C.L.S.

This plan lies within the Fraser-Fort George Regional District.

KILBRIDE LAND SURVEYING LTD. British Columbia Land Surveyors Prince George, B.C. Ph: (604) 562-1196 Fax: 562-3656		
F.B.- UG 32	D.L.- 2003	REF. NO.- 940139R2

BOOK OF REFERENCE	
DESCRIPTION	AREA
Lot 1	701 m ²
Lot 5	119 m ²
Lot 6	241 m ²
Lot 7	85 m ²

26-FF-226



Remainder 1
Plan PGP36193

