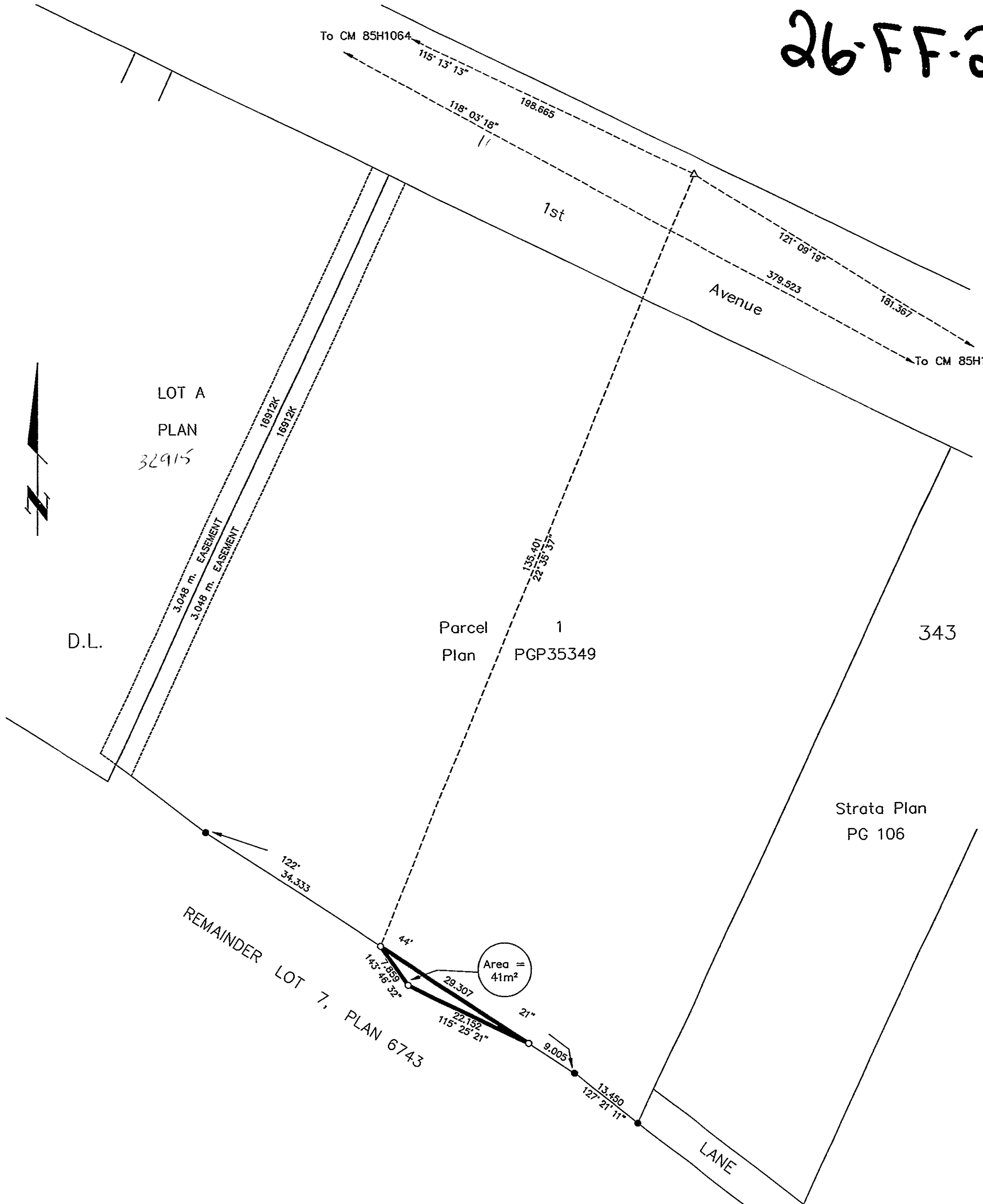


26-FF-226

PLAN NO. PGP38223

Deposited in the Land Title Office at Prince George this 1 day of September 1994

Deputy Registrar *J. Pearson*
/lwk
PH35296



LOT A
PLAN
32915

D.L.

Parcel
Plan
1
PGP35349

343

Strata Plan
PG 106

REMAINDER LOT 7, PLAN 6743

REFERENCE PLAN OF EASEMENT
WITHIN REMAINDER LOT 7,
PLAN 6743, DISTRICT LOT 343,
CARIBOO DISTRICT.

B.C.G.S. 93G.097

Scale: 1 : 500 (Distances are in metres)



Grid bearings are derived from observations between control monuments 85H1064 and 85H1322, integrated survey area number 39, City of Prince George, B.C.

LEGEND

- Standard Iron Post Found
- Standard Iron Post Placed
- ⊙ Control Monument
- △ Traverse Hub Placed

Note: This plan shows ground level measured distances. Prior to computation of U.T.M. co-ordinates multiply by the combined factor 0.9995105393

I, Dale L. Keown, a British Columbia Land Surveyor of Prince George in British Columbia, certify that I was present at and personally superintended the survey represented by this plan and that the survey and plan are correct. The survey was completed on the 3rd day of October, 1993.

Dale Keown
Dale L. Keown, B.C.L.S.

This plan lies within the Fraser-Fort George Regional District.

KILBRIDE LAND SURVEYING LTD. British Columbia Land Surveyors Prince George, B.C. Ph: (604) 562-1196 Fax: 562-3656		
F.B.- RA	D.L.- 343 Block - 6	REF. NO.- 930873